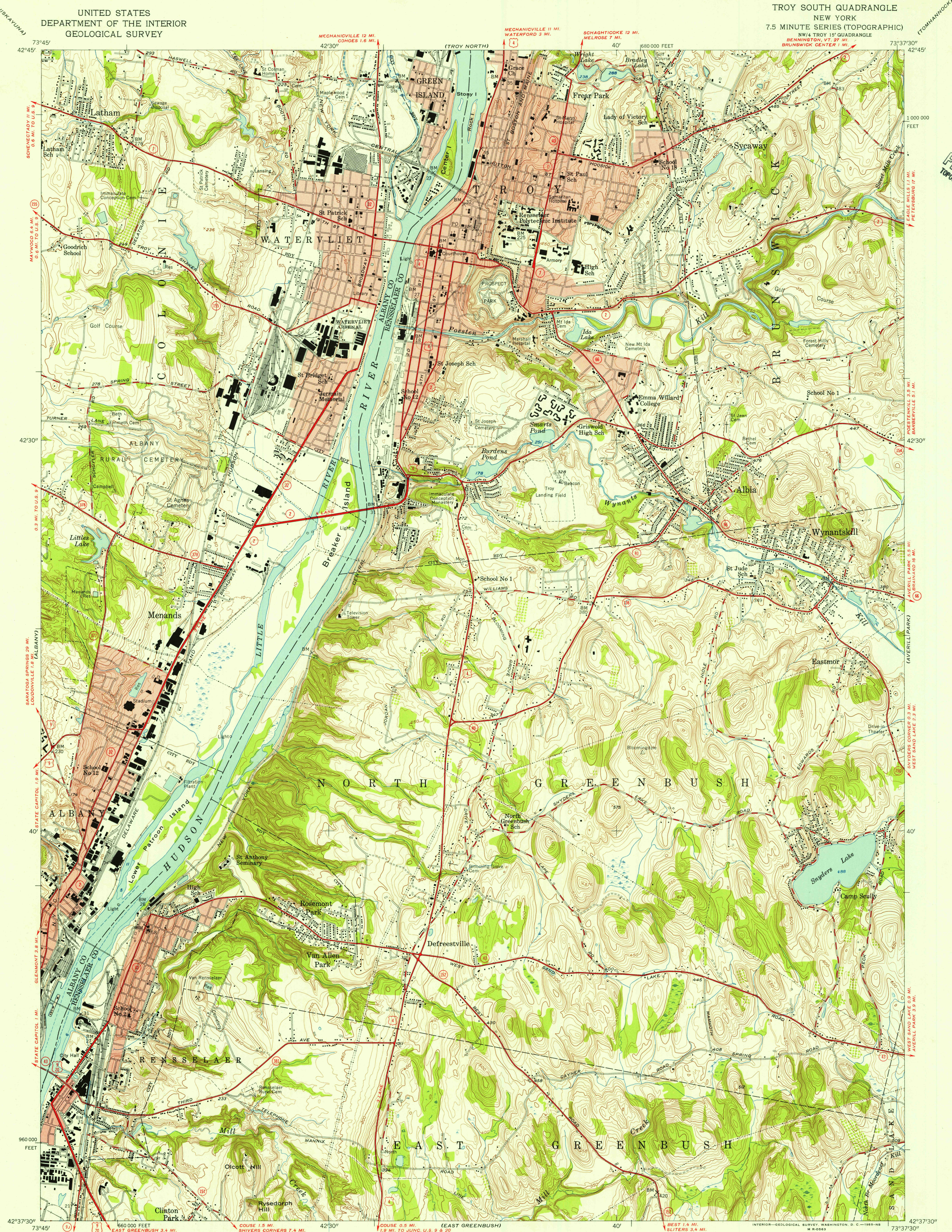


UNITED STATES
DEPARTMENT OF THE INTERIOR
GEOLOGICAL SURVEY

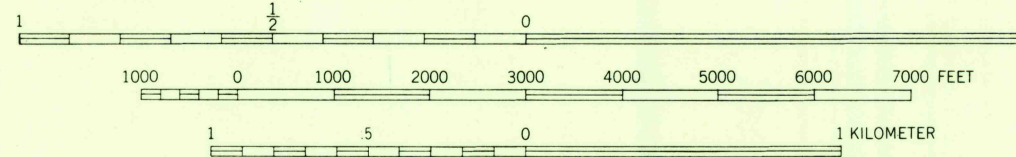
TROY SOUTH QUADRANGLE
NEW YORK
7.5 MINUTE SERIES (TOPOGRAPHIC)
NW 1/4 TROY 15' QUADRANGLE
BENNINGTON, VT. 27 MI.
BRUNSWICK CENTER 1 MI.

U.S.G.S.
FILE COPY
TOPOGRAPHIC DIVISION



Mapped, edited, and published by the Geological Survey
Control by USGS and USC&GS
Topography from aerial photographs by stereophotogrammetric
methods. Aerial photographs taken 1952. Field check 1953
Hydrography from USC&GS chart 284, dated 1942
Polyconic projection. 1927 North American datum
10,000-foot grid based on New York coordinate system,
east zone
Red tint indicates areas in which only
landmark buildings are shown
Unchecked elevations are shown in brown

SCALE 1:24000



CONTOUR INTERVAL 10 FEET
DATUM IS MEAN SEA LEVEL

DEPTH CURVES AND SOUNDINGS IN FEET—DATUM IS MEAN LOW WATER
SHORELINE SHOWN REPRESENTS THE APPROXIMATE LINE OF MEAN HIGH WATER
THE MEAN RANGE OF TIDE IS 4.7 FEET

THIS MAP COMPLIES WITH NATIONAL MAP ACCURACY STANDARDS
FOR SALE BY U.S. GEOLOGICAL SURVEY, WASHINGTON 25, D.C.
A FOLDER DESCRIBING TOPOGRAPHIC MAPS AND SYMBOLS IS AVAILABLE ON REQUEST

USGS
Historical File
Topographic Division



ROAD CLASSIFICATION
Heavy-duty ——— Light-duty ———
Medium-duty ——— Unimproved dirt ———
U.S. Route ——— State Route ———

TROY SOUTH, N. Y.
NW 1/4 TROY 15' QUADRANGLE
N 4237.5—W 7337.5/7.5

1953

U.S.G.S.
FILE COPY
TOPOGRAPHIC DIVISION

JAN 3 1956

4200