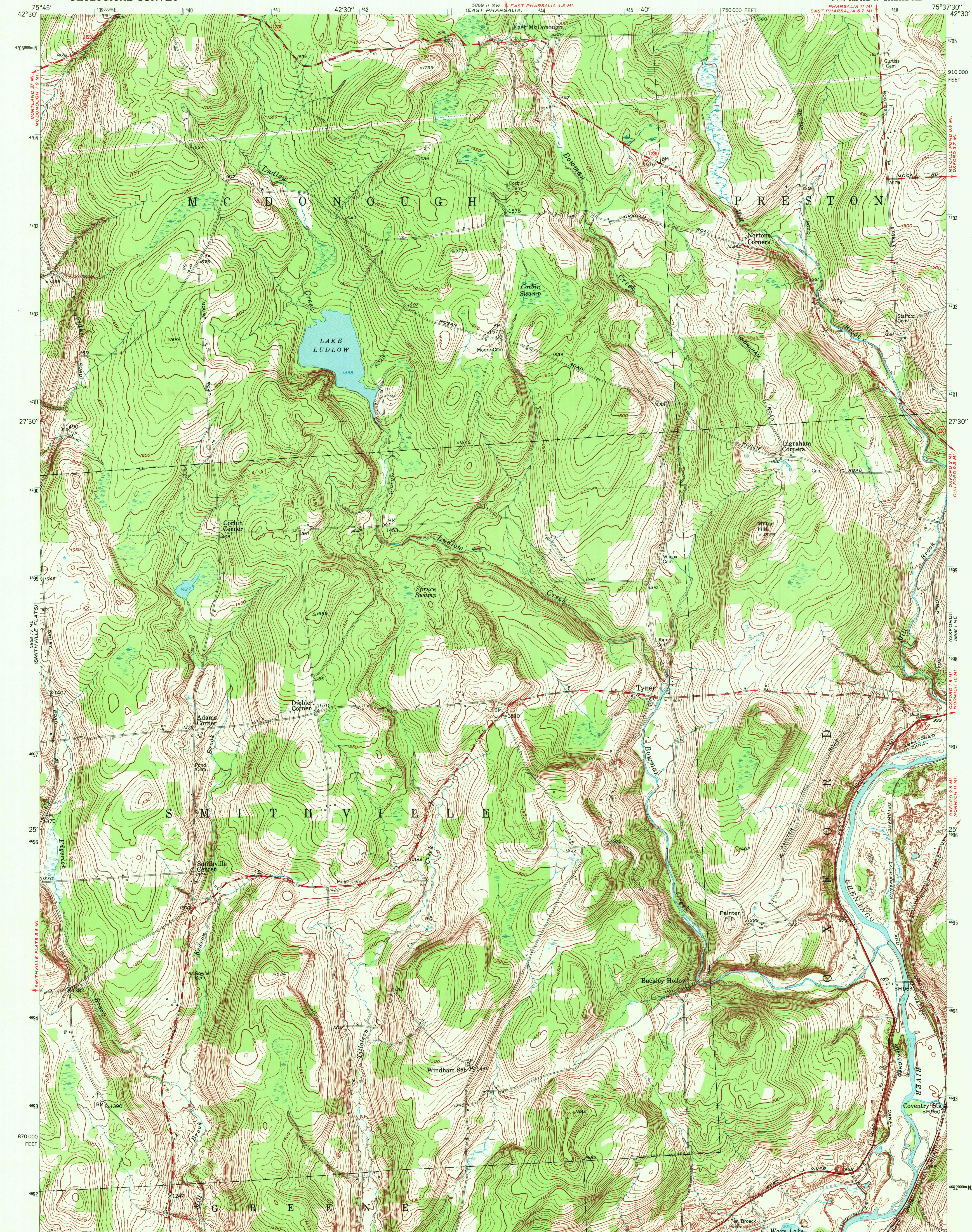
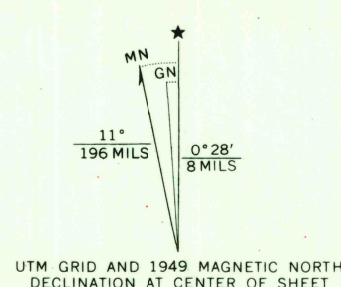


UNITED STATES
DEPARTMENT OF THE INTERIOR
GEOLOGICAL SURVEY

TYNER QUADRANGLE
NEW YORK-CHENANGO CO.
7.5 MINUTE SERIES (TOPOGRAPHIC)
NW/4 OXFORD 15' QUADRANGLE



Mapped, edited, and published by the Geological Survey
Control by USGS and USC&GS
Topography from aerial photographs by multiplex methods
Aerial photographs taken 1944. Field check 1949
Polyconic projection. 1927 North American datum
10,000-foot grid based on New York coordinate system,
central zone
1000-meter Universal Transverse Mercator grid ticks,
zone 18, shown in blue



CONTOUR INTERVAL 10 FEET
DATUM IS MEAN SEA LEVEL

THIS MAP COMPLIES WITH NATIONAL MAP ACCURACY STANDARDS
FOR SALE BY U. S. GEOLOGICAL SURVEY, WASHINGTON, D. C. 20242
A FOLDER DESCRIBING TOPOGRAPHIC MAPS AND SYMBOLS IS AVAILABLE ON REQUEST



ROAD CLASSIFICATION
Heavy-duty ——— Light-duty ———
Medium-duty ——— Unimproved dirt ———
State Route

USGS
HISTORICAL FILE
TOPOGRAPHIC DIVISION

TYNER, N. Y.
NW/4 OXFORD 15' QUADRANGLE
N4222.5-W7537.5/7.5
1949
AMS 5868 1 NW-SERIES V821

2685
DEC 20 1971