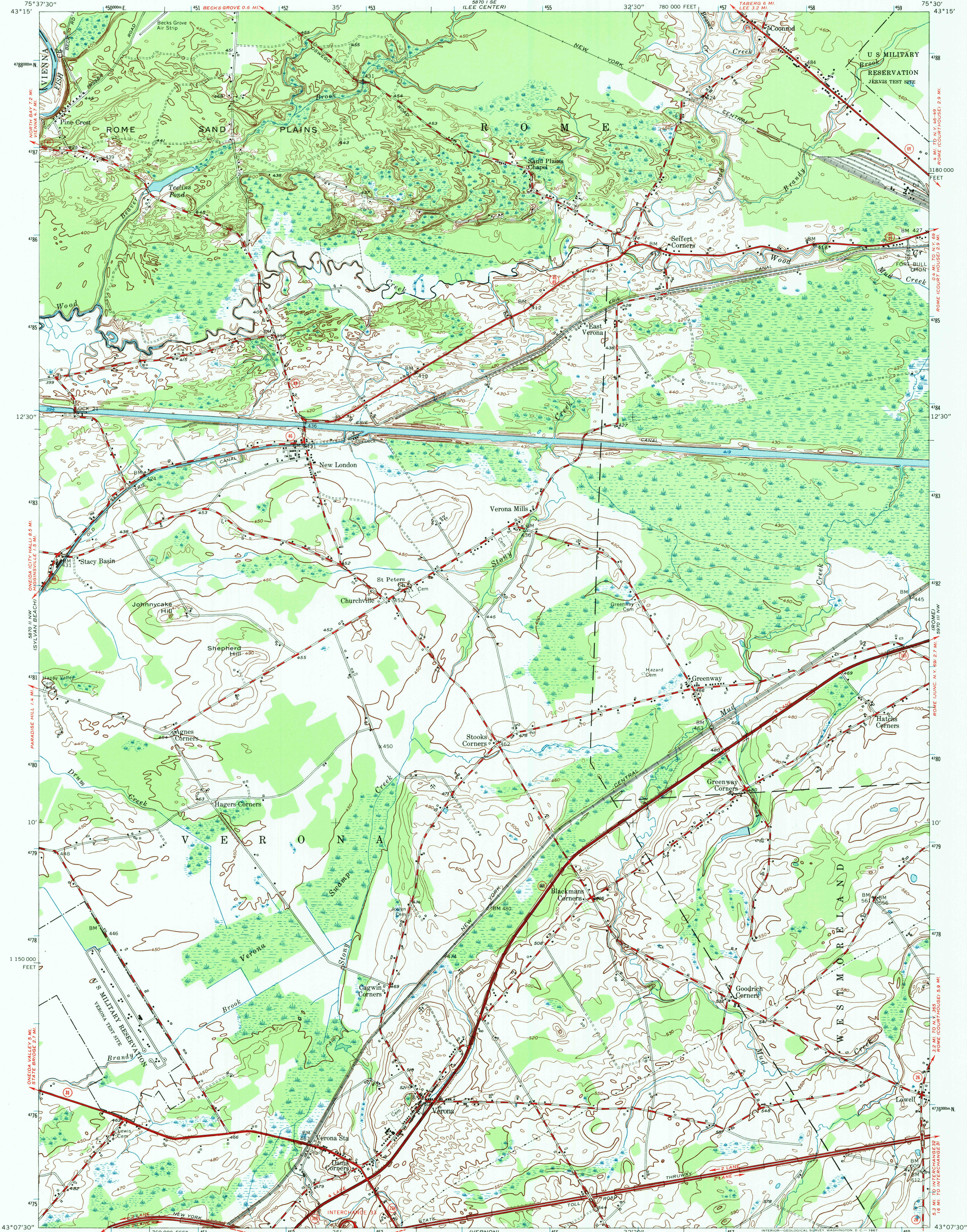
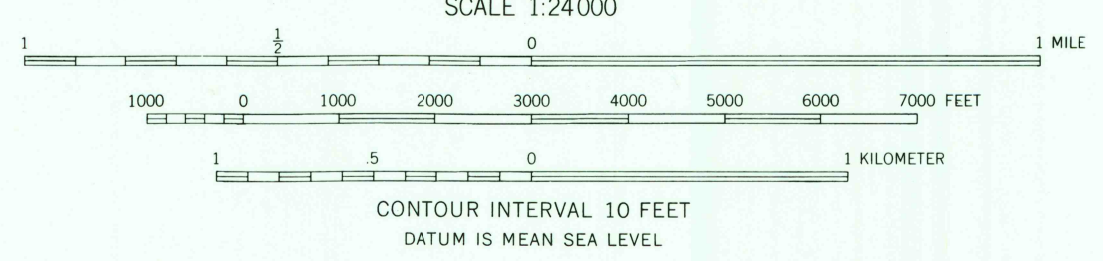
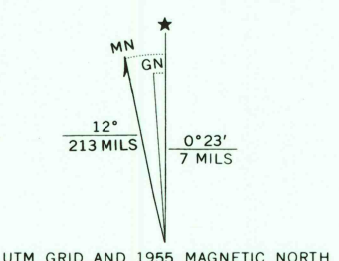


UNITED STATES
DEPARTMENT OF THE INTERIOR
GEOLOGICAL SURVEY

VERONA QUADRANGLE
NEW YORK-ONEIDA CO.
7.5 MINUTE SERIES (TOPOGRAPHIC)
NE/4 ONEIDA 15' QUADRANGLE



Mapped, edited, and published by the Geological Survey
Control by USGS and USC&GS
Culture and drainage in part compiled from aerial photographs
taken 1941. Topography by planetable surveys 1946. Revised 1955
Polyconic projection. 1927 North American datum
10,000-foot grid based on New York coordinate system,
central zone
1000-meter Universal Transverse Mercator grid ticks,
zone 18, shown in blue



ROAD CLASSIFICATION
Heavy-duty —————
Medium-duty —————
Light-duty —————
Unimproved dirt —————
State Route ————

VERONA, N. Y.
NE/4 ONEIDA 15' QUADRANGLE
N4307.5—W7530/7.5
1955
AMS 5870 II NE—SERIES 821

USGS AND HISTORICAL
MAP ARCHIVES
FEB 28 1997
REC'D FILE COPY

