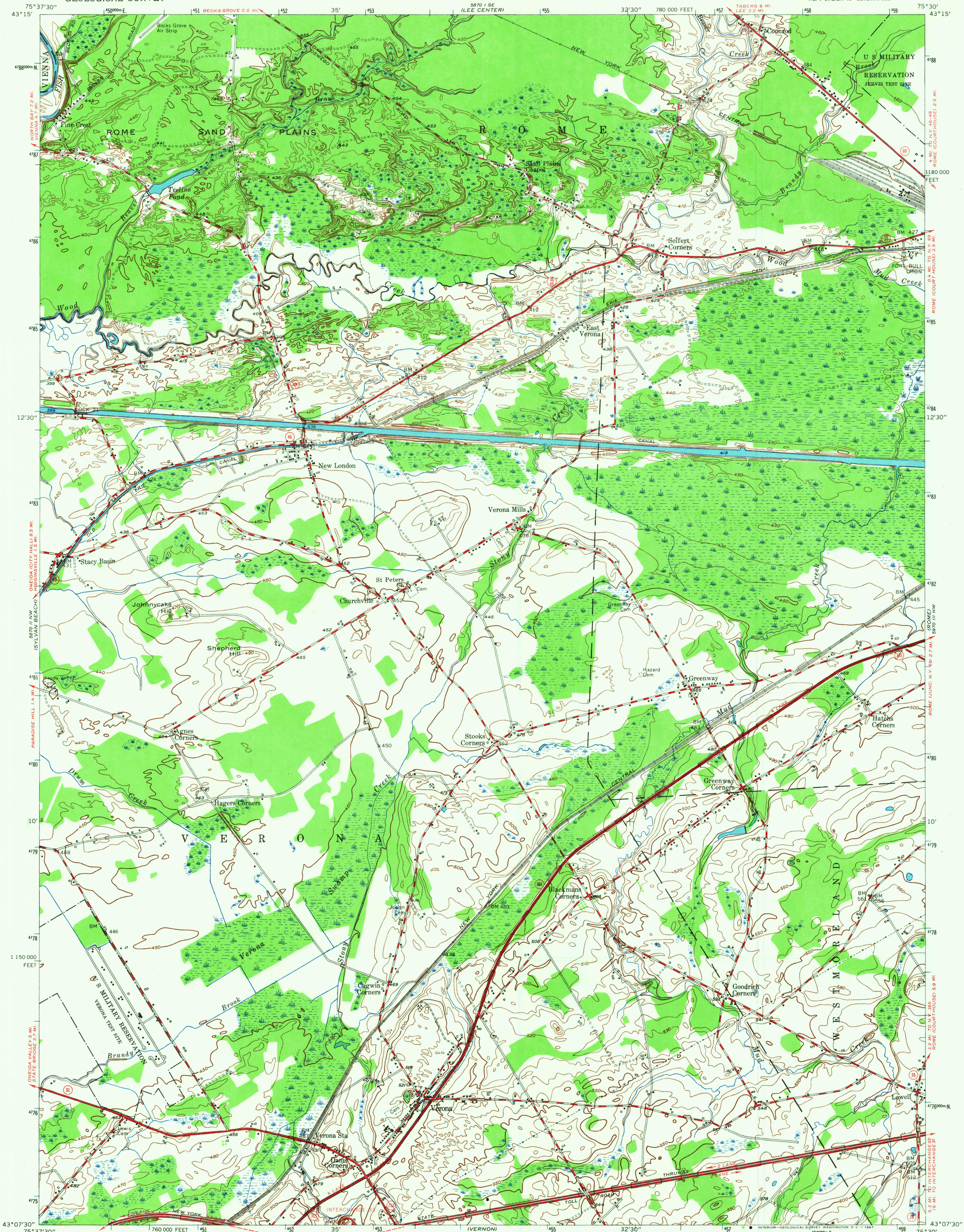
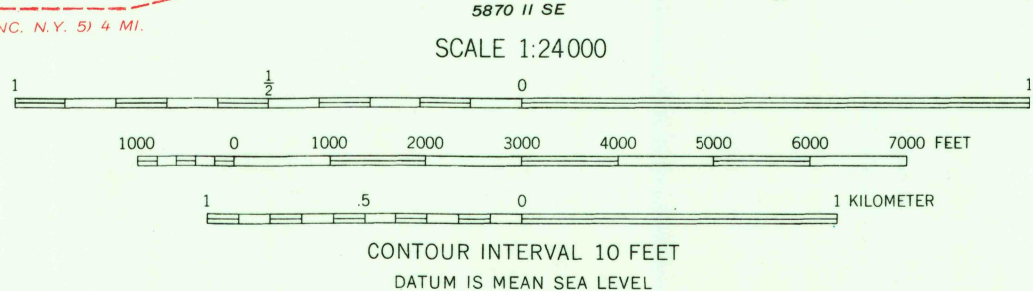


UNITED STATES  
DEPARTMENT OF THE INTERIOR  
GEOLOGICAL SURVEY

VERONA QUADRANGLE  
NEW YORK-ONEIDA CO.  
7.5 MINUTE SERIES (TOPOGRAPHIC)  
NE/4 ONEIDA 15' QUADRANGLE



Mapped, edited, and published by the Geological Survey  
Control by USGS and USCGS  
Culture and drainage in part compiled from aerial photographs  
taken 1941. Topography by planetable surveys 1946. Revised 1955  
Polyconic projection. 1927 North American datum  
10,000-foot grid based on New York coordinate system,  
central zone  
1000-meter Universal Transverse Mercator grid ticks,  
zone 18, shown in blue



USGS  
Historical File  
Topographic Division

ROAD CLASSIFICATION  
Heavy-duty ——— Light-duty ———  
Medium-duty ——— Unimproved dirt ———  
State Route



VERONA, N. Y.  
NE/4 ONEIDA 15' QUADRANGLE  
N4307.5-W7530.7/5

1955  
AMS 5870 II NE-SERIES V821

THIS MAP COMPLIES WITH NATIONAL MAP ACCURACY STANDARDS  
FOR SALE BY U. S. GEOLOGICAL SURVEY, WASHINGTON, D. C. 20242  
A FOLDER DESCRIBING TOPOGRAPHIC MAPS AND SYMBOLS IS AVAILABLE ON REQUEST

3/70  
NOV 1 1967