

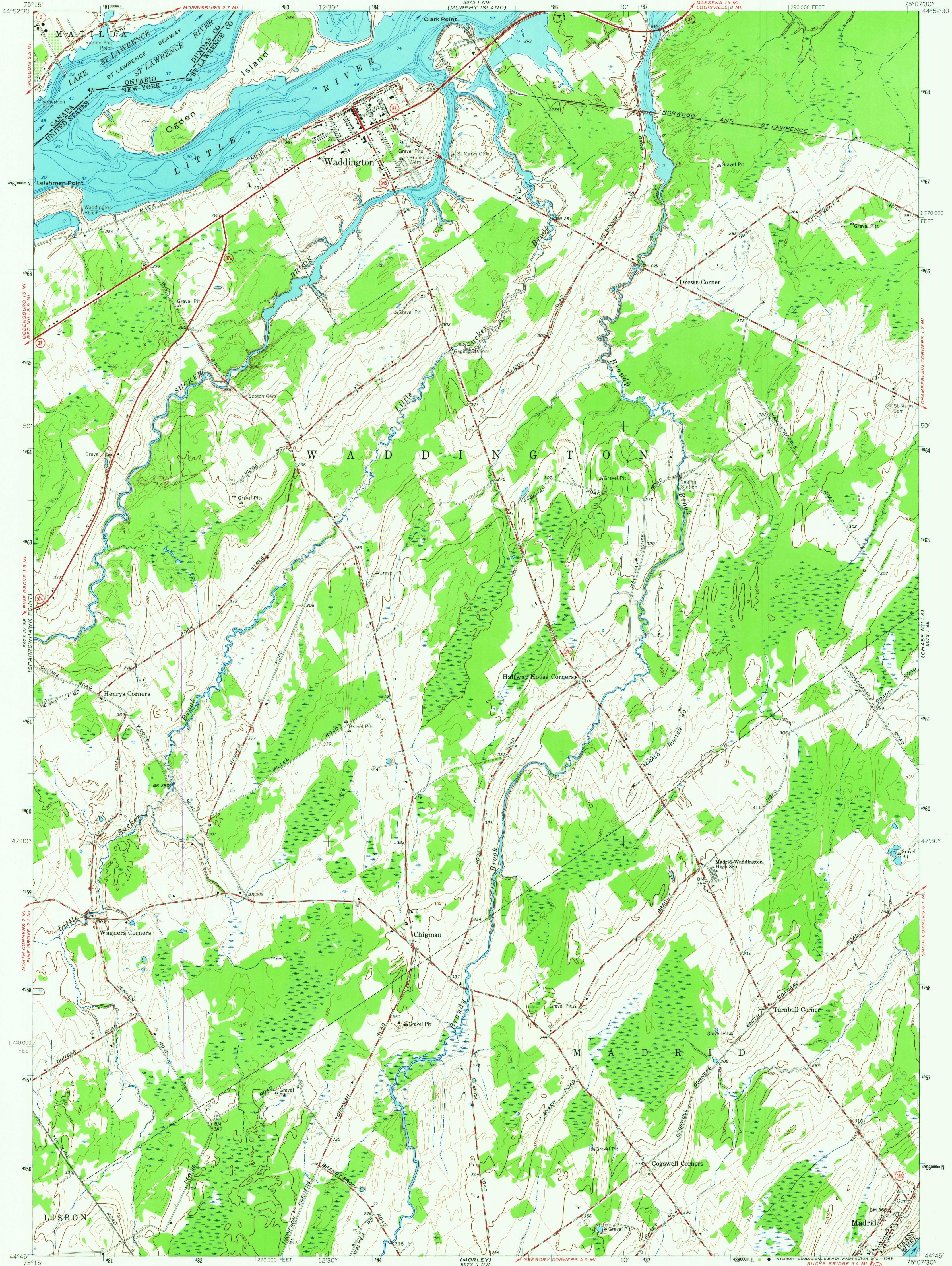
5973 IV SE
(160 500)

UNITED STATES
DEPARTMENT OF THE INTERIOR
GEOLOGICAL SURVEY

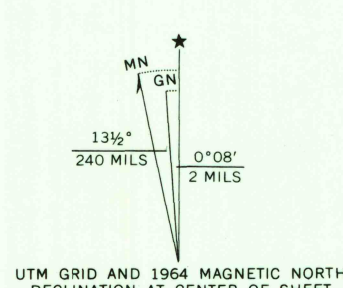
STATE OF NEW YORK
DEPARTMENT OF PUBLIC WORKS

WADDINGTON QUADRANGLE
NEW YORK-ONTARIO
7.5 MINUTE SERIES (TOPOGRAPHIC)
SW 1/4 WADDINGTON 15' QUADRANGLE

5973 I NE
(LOUISVILLE)

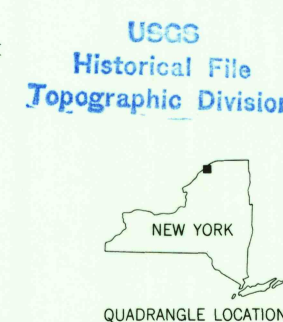


Mapped, edited, and published by the Geological Survey
Control by USGS, USC&GS, U.S. Lake Survey,
and International Boundary Commission
Topography by photogrammetric methods from aerial
photographs taken 1963. Field checked 1964
Selected hydrographic data compiled from U.S. Lake Survey
Chart 12 (1962). This information is not intended for
nautical purposes
Polyconic projection. 1927 North American datum
10,000-foot grid based on New York coordinate system, east zone
1000-meter Universal Transverse Mercator grid ticks,
zone 18, shown in blue
Fine red dashed lines indicate selected fence and field lines where
generally visible on aerial photographs. This information is unchecked



SCALE 1:24,000
CONTOUR INTERVAL 10 FEET
DATUM IS MEAN SEA LEVEL
DEPTH CURVES AND SOUNDINGS IN FEET-DATUM IS RIVER SURFACE AT
FOLLOWING STAGES: BELOW IROQUOIS LOCK 239.7 AND ABOVE EISENHOWER LOCK 237.5

THIS MAP COMPLIES WITH NATIONAL MAP ACCURACY STANDARDS
FOR SALE BY U.S. GEOLOGICAL SURVEY, WASHINGTON, D.C. 20242
A FOLDER DESCRIBING TOPOGRAPHIC MAPS AND SYMBOLS IS AVAILABLE ON REQUEST



ROAD CLASSIFICATION
Heavy-duty —————
Light-duty —————
Medium-duty —————
Unimproved dirt —————
State Route ————

WADDINGTON, N.Y.-ONT.
SW 1/4 WADDINGTON 15' QUADRANGLE
N4445-W7507.5/7.5

1964
AMS 5973 I SW-SERIES V821

U.S.G.S.
FILE COPY
TOPOGRAPHIC DIVISION

2995
MAR 6 1966