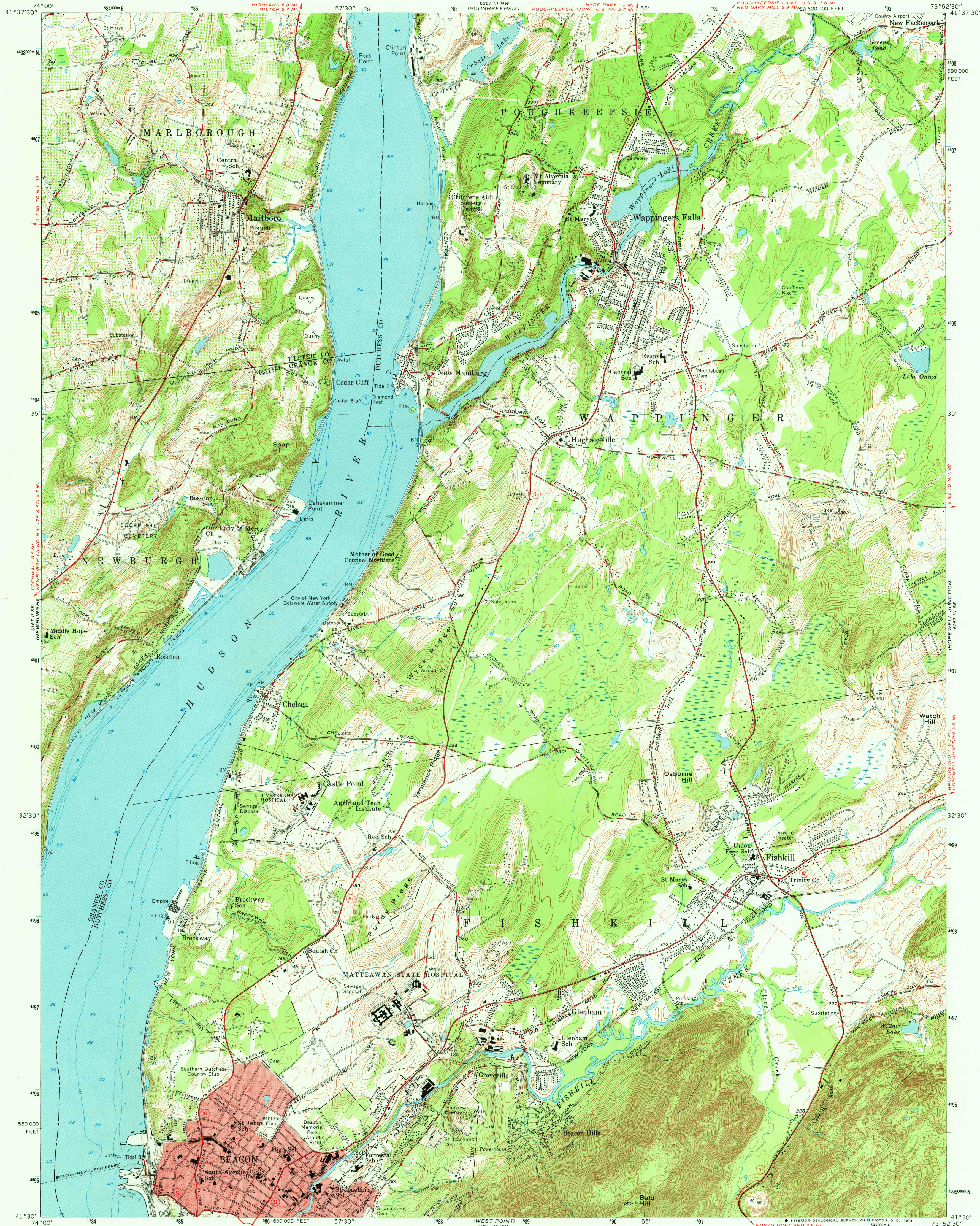


UNITED STATES  
DEPARTMENT OF THE INTERIOR  
GEOLOGICAL SURVEY

WAPPINGERS FALLS QUADRANGLE  
NEW YORK  
7.5 MINUTE SERIES (TOPOGRAPHIC)



Mapped, edited, and published by the Geological Survey

Control by USGS and USC&GS

Topography from aerial photographs by photogrammetric methods

Aerial photographs taken 1955. Field check 1956

Hydrography compiled from USC&GS charts 282 (1954), and

283 (1954)

Polycyclic projection. 1927 North American datum

10,000-foot based on New York coordinate system,

east zone

1000-meter Universal Transverse Mercator grid ticks,

zone 18, shown in blue

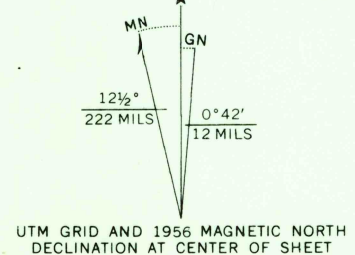
Fine red dashed lines indicate selected fence and field lines

visible on aerial photographs. This information is unchecked

Red tint indicates area in which only

landmark buildings are shown

Unchecked elevations are shown in brown



SCALE 1:24,000

1 1000 0 1000 2000 3000 4000 5000 6000 7000 FEET

1 1 2 3 4 5 6 7 8 9 10 KILOMETER

CONTOUR INTERVAL 10 FEET

DATUM IS MEAN SEA LEVEL

DEPTH CURVES AND SOUNDINGS IN FEET—DATUM IS MEAN LOW WATER

SHORELINE SHOWN REPRESENTS THE APPROXIMATE LINE OF MEAN HIGH WATER

THE MEAN RANGE OF TIDE IS APPROXIMATELY 2.9 FEET



ROAD CLASSIFICATION

Heavy-duty ——— Light-duty ———

Medium-duty ——— Unimproved dirt ———

U. S. Route State Route

MAR 2 8 1973

WAPPINGERS FALLS, N. Y.

N4130—W7352.5/7.5

1956

AMS 6267 III SW—SERIES V821

THIS MAP COMPLIES WITH NATIONAL MAP ACCURACY STANDARDS

FOR SALE BY U.S. GEOLOGICAL SURVEY, WASHINGTON, D. C. 20242

A FOLDER DESCRIBING TOPOGRAPHIC MAPS AND SYMBOLS IS AVAILABLE ON REQUEST