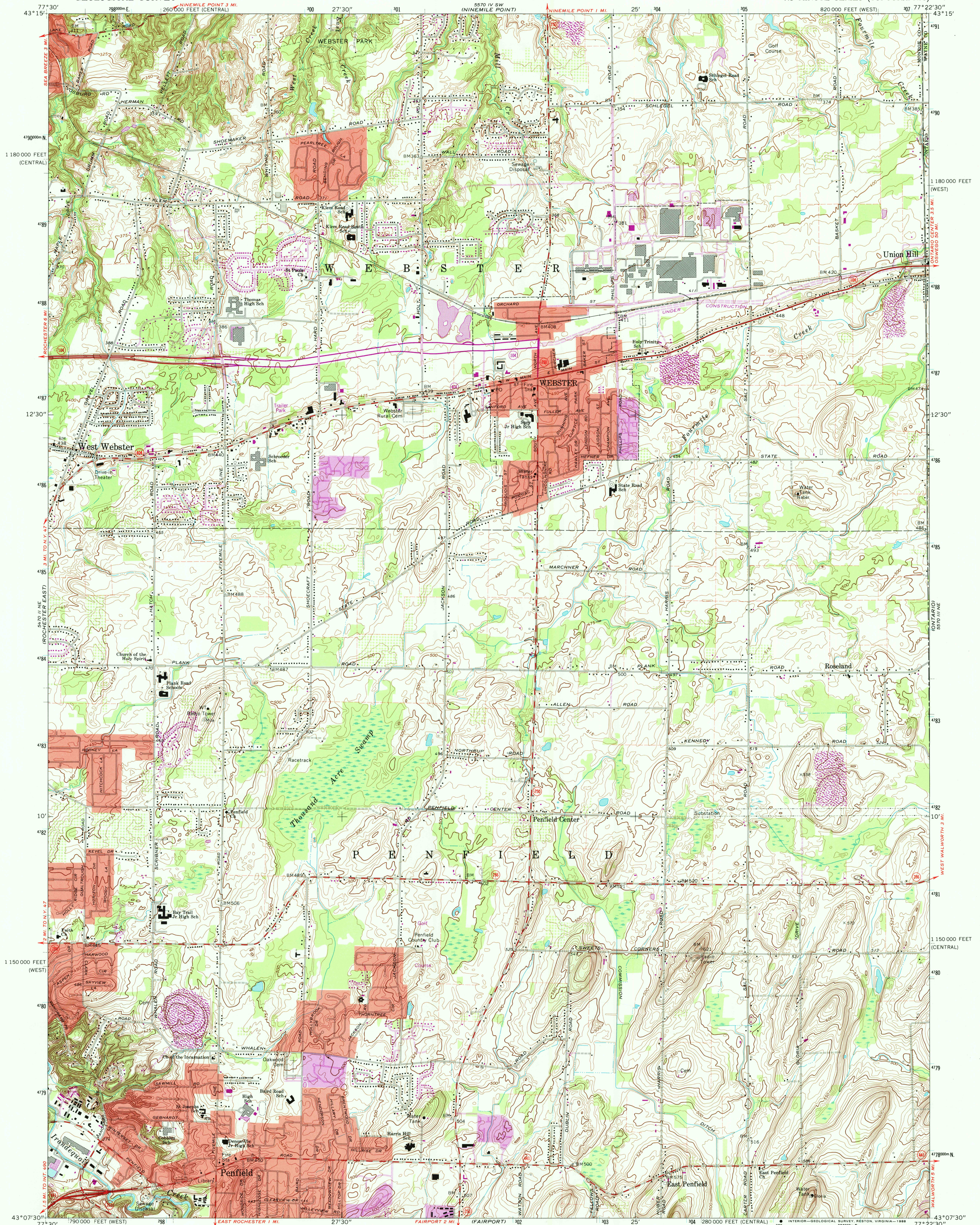


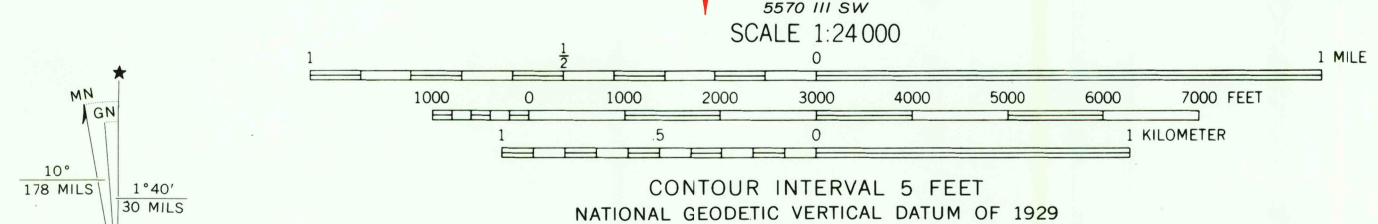
UNITED STATES
DEPARTMENT OF THE INTERIOR
GEOLOGICAL SURVEY

STATE OF NEW YORK
DEPARTMENT OF TRANSPORTATION

WEBSTER QUADRANGLE
NEW YORK
7.5 MINUTE SERIES (TOPOGRAPHIC)



Mapped, edited, and published by the Geological Survey
Control by USGS, USC&GS, and New York Geodetic Survey
Topography by photogrammetric methods from aerial photographs
taken 1971. Field checked 1971
Supersedes map dated 1952
Projection: New York coordinate system, west zone
(transverse Mercator)
10,000-foot grid ticks based on New York coordinate system,
west and central zones
1000-meter Universal Transverse Mercator grid ticks,
zone 18, shown in blue. 1927 North American datum
Fine red dashed lines indicate selected fence and field lines where
generally visible on aerial photographs. This information is unchecked
Red tint indicates areas in which only landmark buildings are shown
Revisions shown in purple compiled from aerial photographs taken 1976 and
other source data. This information not field checked. Map dated 1978



ROAD CLASSIFICATION
Primary highway, hard surface
Secondary highway, hard surface
Unimproved road
Interstate Route
U. S. Route
State Route
Light-duty road, hard or improved surface
Unimproved road
Interstate Route
U. S. Route
State Route



THIS MAP COMPLIES WITH NATIONAL MAP ACCURACY STANDARDS
FOR SALE BY U. S. GEOLOGICAL SURVEY
DENVER, COLORADO 80225, OR RESTON, VIRGINIA 22092
A FOLDER DESCRIBING TOPOGRAPHIC MAPS AND SYMBOLS IS AVAILABLE ON REQUEST

To place on the predicted North American Datum 1983
move the projection lines 2 meters south and
24 meters west as shown by dashed corner ticks

WEBSTER, N. Y.
43077-B4-TF-024
1971
PHOTOREVISED 1978
DMA 5570 III NW-SERIES V821

USGS NMD HISTORICAL MAP
SEP 12 1988
REC'D FILE COPY