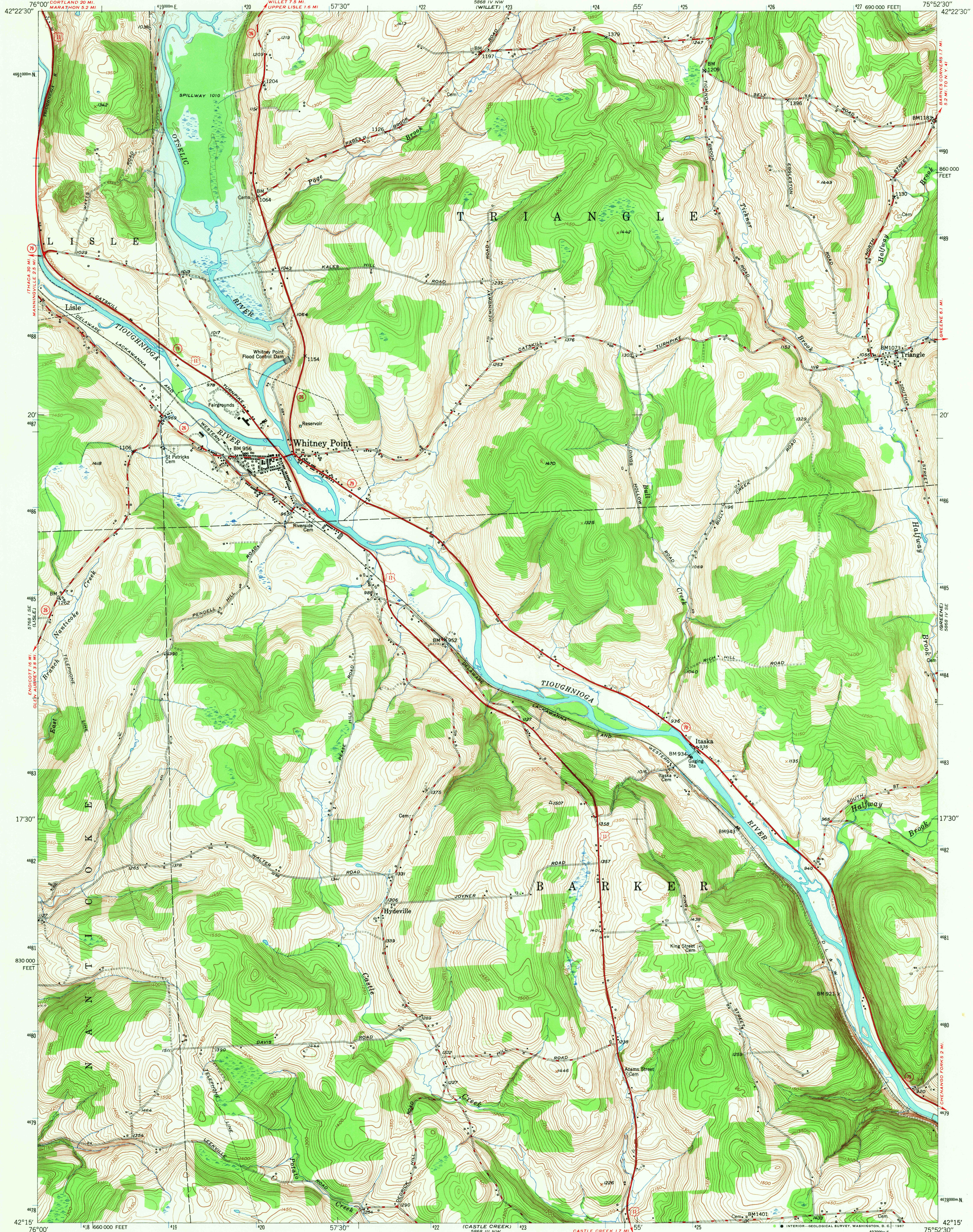


UNITED STATES
DEPARTMENT OF THE INTERIOR
GEOLOGICAL SURVEY

WHITNEY POINT QUADRANGLE
NEW YORK-BROOME CO.
7.5 MINUTE SERIES (TOPOGRAPHIC)
SW/4 GREENE 15' QUADRANGLE

5888 IV NW
(WILLET)
5888 IV NE
(SMITHVILLE PLATS)



Mapped, edited, and published by the Geological Survey

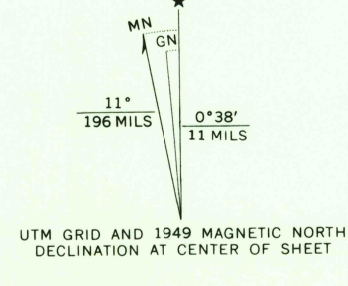
Control by USGS, USC&GS, and USED

Topography from aerial photographs by multiplex methods
Aerial photographs taken 1944. Field check 1949

Polyconic projection. 1927 North American datum
10,000-foot grid based on New York coordinate system,
central zone

Blue hatching above Whitney Point Dam indicates area
subject to controlled inundation

1000-meter Universal Transverse Mercator grid ticks,
zone 18, shown in blue



CONTOUR INTERVAL 10 FEET
DATUM IS MEAN SEA LEVEL

THIS MAP COMPLIES WITH NATIONAL MAP ACCURACY STANDARDS
FOR SALE BY U. S. GEOLOGICAL SURVEY, WASHINGTON, D. C. 20242
A FOLDER DESCRIBING TOPOGRAPHIC MAPS AND SYMBOLS IS AVAILABLE ON REQUEST

USGS
Historical File
Topographic Division

ROAD CLASSIFICATION
HARD SURFACE ALL WEATHER ROADS DRY WEATHER ROADS
Heavy-duty ———— 4 LANE 8 LANE Improved dirt ————
Medium-duty ———— 4 LANE 8 LANE Unimproved dirt ————
Loose surface, graded, or narrow hard-surface ————
U. S. Route State Route

U.S.G.S.
FILE COPY
TOPOGRAPHIC DIVISION

WHITNEY POINT, N. Y.
SW/4 GREENE 15' QUADRANGLE
N4215-W7552.5/7.5

1949
AMS 5888 IV SW-SERIES V821

2050
MAY 9 1967