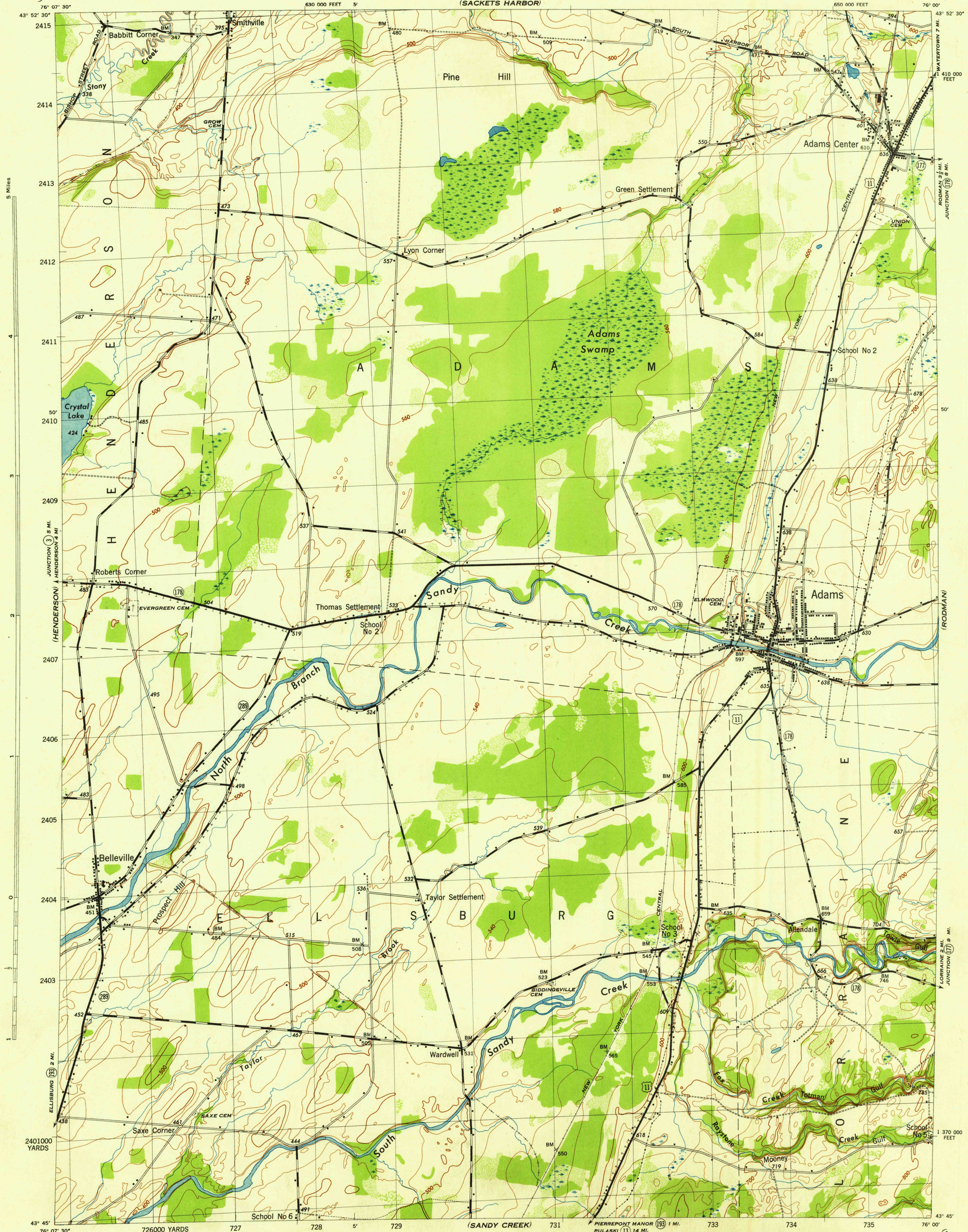


NEW YORK 1:31,680
(JEFFERSON COUNTY)

WAR DEPARTMENT
CORPS OF ENGINEERS, U. S. ARMY

ADAMS QUADRANGLE
7½-MINUTE SERIES



Map by Tennessee Valley Authority under direction of the
Chief of Engineers, U. S. Army, 1942.
Control by USCGS and TVA.
Topography by Tennessee Valley Authority plane-table surveys.
Culture and drainage in part compiled from aerial photographs.
Wide-angle photography for TVA, 1942.
Polyconic projection, 1927 North American datum.

ROAD CLASSIFICATION
Dependable hard-surface, heavy-duty road. ——— U. S. Route 11
Loose-surface graded, dry-weather road. ——— State Route 289
Secondary, hard-surface, all-weather road. ———
Dirt road. ———
More than two lanes indicated by note along road with tick at point of change. 3 LANE 2 LANE
THIS MAP COMPLIES WITH THE NATIONAL STANDARD MAP ACCURACY REQUIREMENTS.

Scale 1:31,680
1 000 500 0 1000 2000 Yards
CONTOUR INTERVAL 20 FEET
DATUM IS MEAN SEA LEVEL
ONE THOUSAND YARD GRID COMPUTED FROM "GRID SYSTEM FOR PROGRESSIVE MAPS IN THE U. S." ZONE A, U. S. & C. S. SPECIAL PUBLICATION NO. 59
THE LAST THREE DIGITS OF THE GRID NUMBERS ARE OMITTED
TEN THOUSAND FOOT GRID BASED ON NEW YORK PLANE COORDINATE SYSTEM, CENTRAL ZONE
NOTE: OFFICERS USING THIS MAP WILL MARK HEREON CORRECTIONS AND ADDITIONS WHICH COME TO THEIR ATTENTION AND MAIL DIRECT TO "THE CHIEF OF ENGINEERS, WASHINGTON, D. C."

USCGS
Historical File
Topographic Division
APPROXIMATE MEAN DECLINATION 1942
ANNUAL MAGNETIC CHANGE 0'

WOODLAND CLASSIFICATION
Dense woodland
Dense brush
Scattered brush and trees
Orchard
Vineyard
ADAMS, N. Y.
N4345-W7600/7.5
EDITION OF 1943