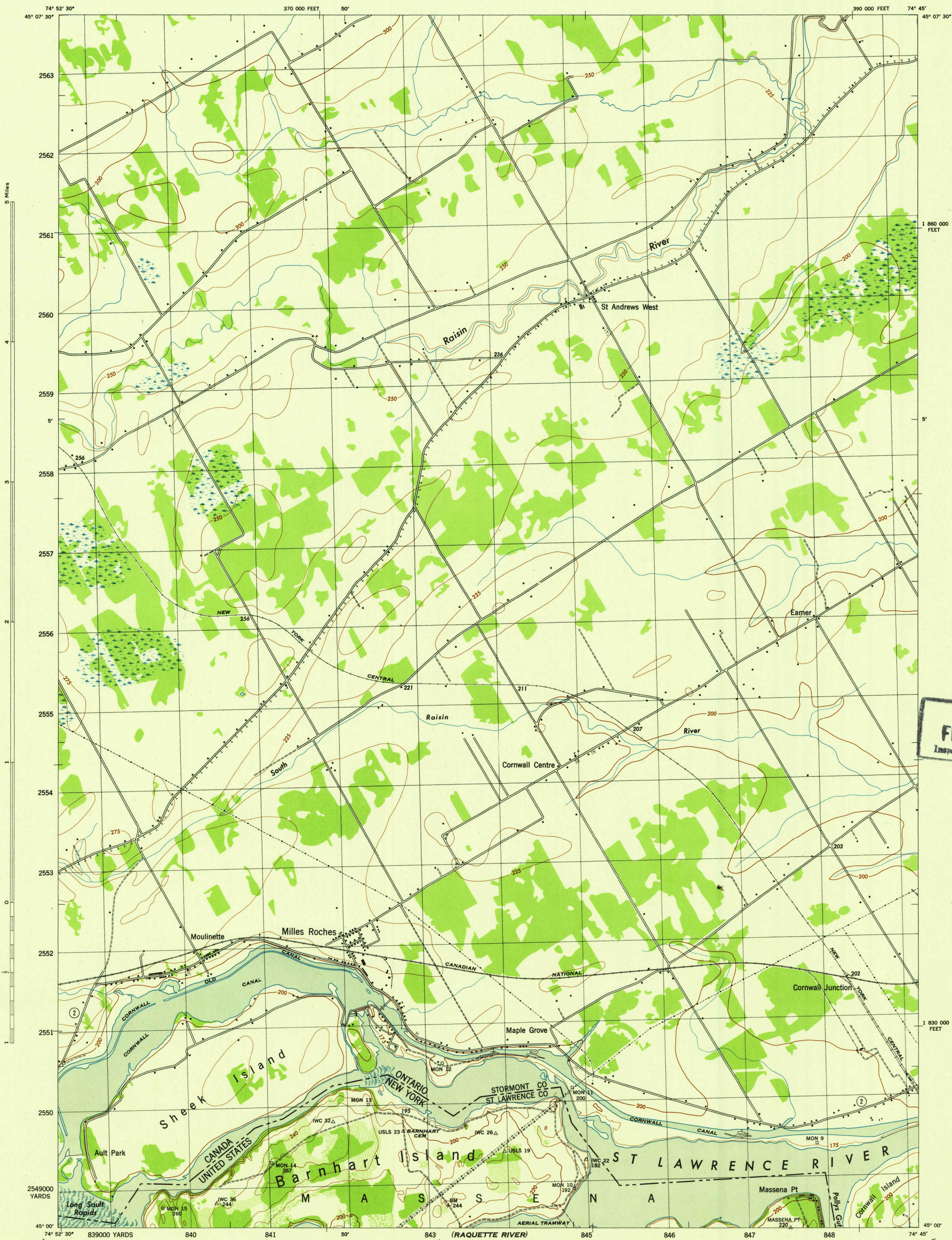


NEW YORK-ONTARIO 1:31,680

WAR DEPARTMENT
CORPS OF ENGINEERS, U. S. ARMY

BARNHART ISLAND QUADRANGLE
7½-MINUTE SERIES



U. S. G. S.
FILE COPY
Inspection and Editing.

Map by Tennessee Valley Authority under direction of the
Chief of Engineers, U. S. Army, 1942.
Control by USCGS, USED, U. S. Lake Survey, International Waterways Commission, and TVA.
Topography by Tennessee Valley Authority plane-table surveys.
Culture and drainage in part compiled from aerial photographs.
Wide-angle photography for TVA, 1942.
Polyconic projection, 1927 North American datum.
Canadian topography projected from maps of Canadian Department of National
Defense, 1904. Revised 1937.
Canadian planimetry revised from aerial photographs, 1942. Not field inspected.

ROAD CLASSIFICATION
Dependable hard-surface,
heavy-duty road. Loose-surface graded,
dry weather road. U. S. Route 75
Secondary, hard-surface,
all-weather road. Dirt road. State Route 64
More than two lanes indicated by note along road with tick at point of change. 2 LANE, 4 LANE
THIS MAP COMPLIES WITH THE NATIONAL STANDARD MAP ACCURACY REQUIREMENTS.

Scale 1:31,680
1 000 500 0 1000 2000 Yards
1 Mile

CONTOUR INTERVAL 20 FEET U. S.
CONTOUR INTERVAL 25 FEET CANADA
DATUM IS MEAN SEA LEVEL

ONE THOUSAND YARD GRID COMPUTED FROM "GRID SYSTEM FOR PROGRESSIVE MAPS
IN THE U. S." ZONE A, U. S. C. & G. S. SPECIAL PUBLICATION NO. 59
THE LAST THREE DIGITS OF THE GRID NUMBERS ARE OMITTED.
TEN THOUSAND FOOT GRID BASED ON NEW YORK PLANE COORDINATE SYSTEM, EASTERN ZONE
NOTE: OFFICERS USING THIS MAP WILL MARK HEREON CORRECTIONS AND ADDITIONS WHICH COME
TO THEIR ATTENTION AND SHALL DIRECT TO "THE CHIEF OF ENGINEERS, WASHINGTON, D. C."

REPRODUCED BY THE TENNESSEE VALLEY AUTHORITY 120095
USGS
Historical File
Topographic Division
APPROXIMATE MEAN
DECLINATION 1942
ANNUAL MAGNETIC CHANGE 0°
13° 13' 23.5 MILS
1° 17' 23.5 MILS
MAGNETIC NORTH
GRID NORTH

WOODLAND CLASSIFICATION
Dense woodland
Dense brush
Scattered brush and trees
Orchard
Vineyard

BARNHART ISLAND, N. Y.-ONT.
N4500-W7445/7.5
EDITION OF 1943

(MOA-15 MINUTE)