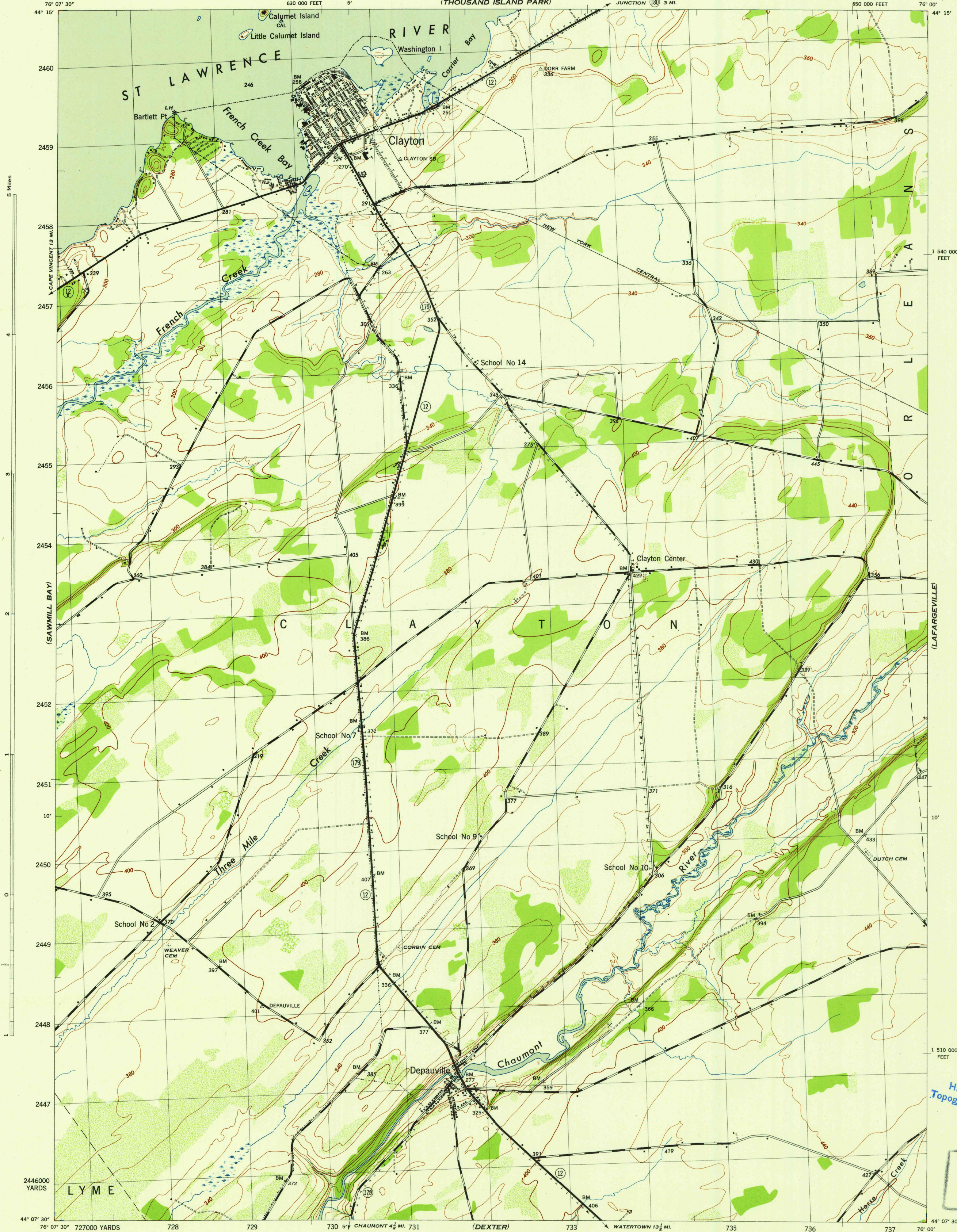


NEW YORK
(JEFFERSON COUNTY)
CLAYTON QUADRANGLE
GRID ZONE "A"

WAR DEPARTMENT
CORPS OF ENGINEERS, U. S. ARMY

NEW YORK
(JEFFERSON COUNTY)
CLAYTON QUADRANGLE
GRID ZONE "A"



USGS
Historical File
Topographic Division

U.S.G.S.
FILE COPY
Inspection and Editing

Mapped by Tennessee Valley Authority under direction of the
Chief of Engineers, U. S. Army, 1942.
Control by USCGS, USGS, U. S. Lake Survey, and TVA.
Topography by Tennessee Valley Authority plane-table surveys.
Culture and drainage in part compiled from aerial photographs.
Wide-angle photography for TVA, 1942.
Polyconic projection, 1927 North American datum.

ROAD CLASSIFICATION
Dependable hard-surface,
heavy-duty road. ——— U. S. Route (20)
Loose-surface graded,
dry-weather road. ——— U. S. Route (12)
Secondary, hard-surface,
all-weather road. ——— State Route
Dirt road. ———
More than two lanes indicated by note along road with tick at point of change. 3 LANE 4 LANE

Scale 1:31,680
1 000 500 0 1000 2000 Yards

CONTOUR INTERVAL 20 FEET
DATUM IS MEAN SEA LEVEL

ONE THOUSAND YARD GRID COMPUTED FROM "GRID SYSTEM FOR PROGRESSIVE MAPS
IN THE U. S. ZONE A, U. S. G. & S. SPECIAL PUBLICATION NO. 59"
THE LAST THREE DIGITS OF THE GRID NUMBERS ARE OMITTED
TEN THOUSAND FOOT GRID BASED ON NEW YORK PLANE COORDINATE SYSTEM, CENTRAL ZONE
NOTE: OFFICIALS USING THIS MAP WILL MARK HEREON CORRECTIONS AND ADDITIONS WHICH COME
TO THEIR ATTENTION AND MAIL DIRECT TO "THE CHIEF OF ENGINEERS, WASHINGTON, D. C."

REPRODUCED BY THE TENNESSEE VALLEY AUTHORITY 120131

APPROXIMATE MEAN
DECLINATION 1942
ANNUAL MAGNETIC CHANGE 0°

WOODLAND CLASSIFICATION
Dense woodland
Dense brush
Scattered brush and trees
Orchard
Vineyard

CLAYTON, N. Y.
N4407.5-W7600/7.5
EDITION OF 1943