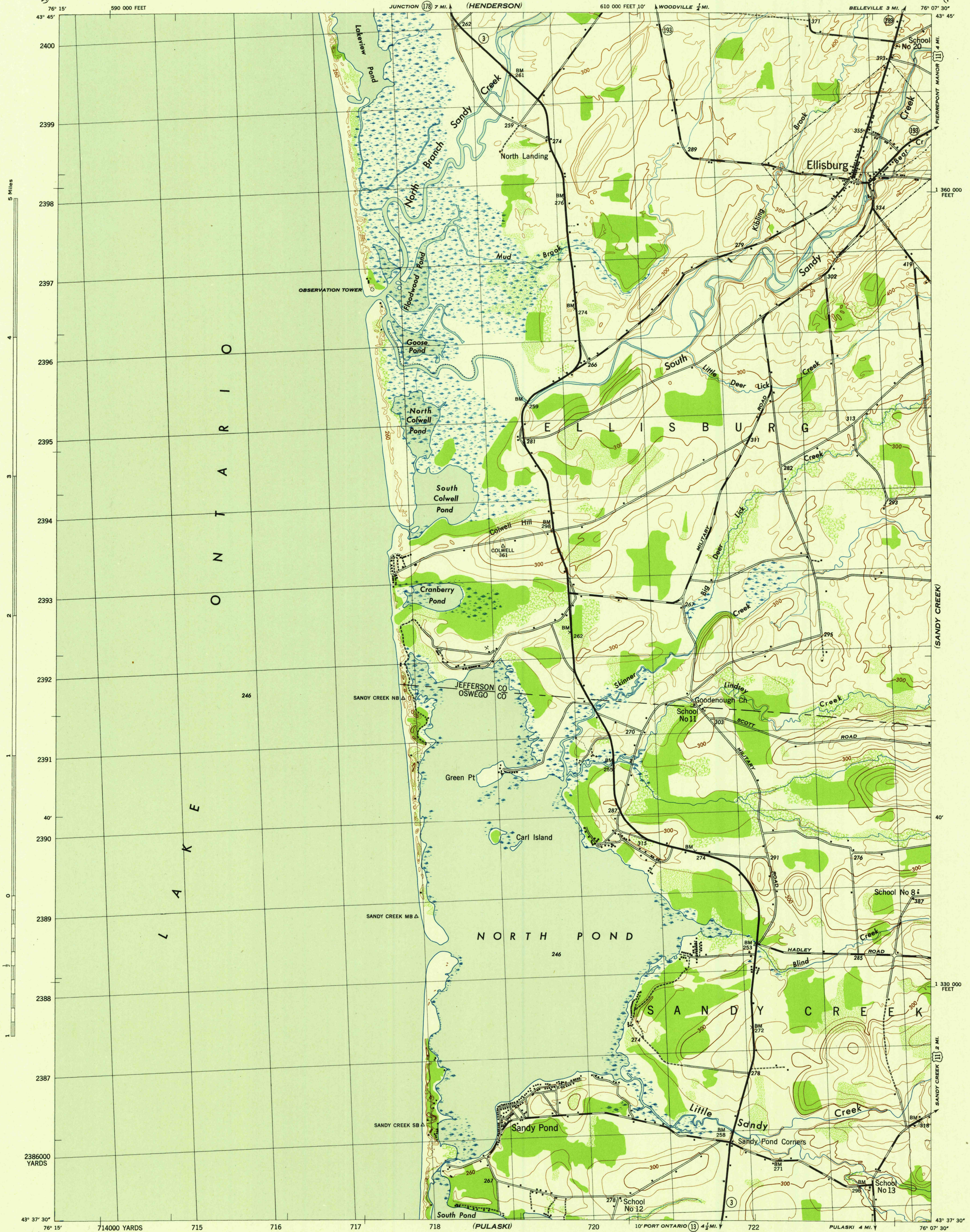


NEW YORK 1:31,680

WAR DEPARTMENT
CORPS OF ENGINEERS, U. S. ARMY

ELLISBURG QUADRANGLE
7 1/2 - MINUTE SERIES

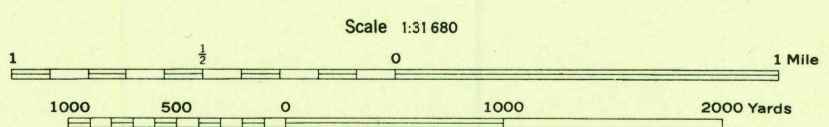


Maped by Tennessee Valley Authority under direction of the
Chief of Engineers, U. S. Army, 1942.
Control by USCGS, USGS, U. S. Lake Survey, and TVA.
Topography by Tennessee Valley Authority plane-table surveys.
Culture and drainage in part compiled from aerial photographs.
Wide-angle photography for TVA, 1942.
Polyconic projection, 1927 North American datum.

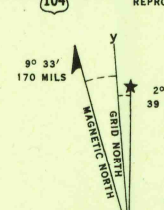
ROAD CLASSIFICATION
Dependable hard-surface,
heavy-duty road. ——— U. S. Route 11
Loose-surface graded,
dry weather road. ——— State Route 3
Secondary, hard-surface,
all-weather road. ———
Dirt road. ———
More than two lanes indicated by note along road with tick at point of change.

WOODLAND CLASSIFICATION
Dense woodland
Dense brush
Scattered brush and trees
Orchard
Vineyard

ELLISBURG, N. Y.
N4337.5-W7607.5/7.5
EDITION OF 1943



ONE THOUSAND YARD GRID COMPUTED FROM "GRID SYSTEM FOR PROGRESSIVE MAPS
IN THE U. S. ZONE A, U. S. C. & G. S. SPECIAL PUBLICATION NO. 89
THE LAST THREE DIGITS OF THE GRID NUMBERS ARE OMITTED
TEN THOUSAND FOOT GRID BASED ON NEW YORK PLANE COORDINATE SYSTEM, CENTRAL ZONE
NOTE: OFFICERS USING THIS MAP WILL MAKE NECESSARY CORRECTIONS AND ADJUSTMENTS
TO THEIR ATTENTION AND MAIL DIRECT TO "THE CHIEF OF ENGINEERS, WASHINGTON, D. C."



USGS
Historical File
Topographic Division