

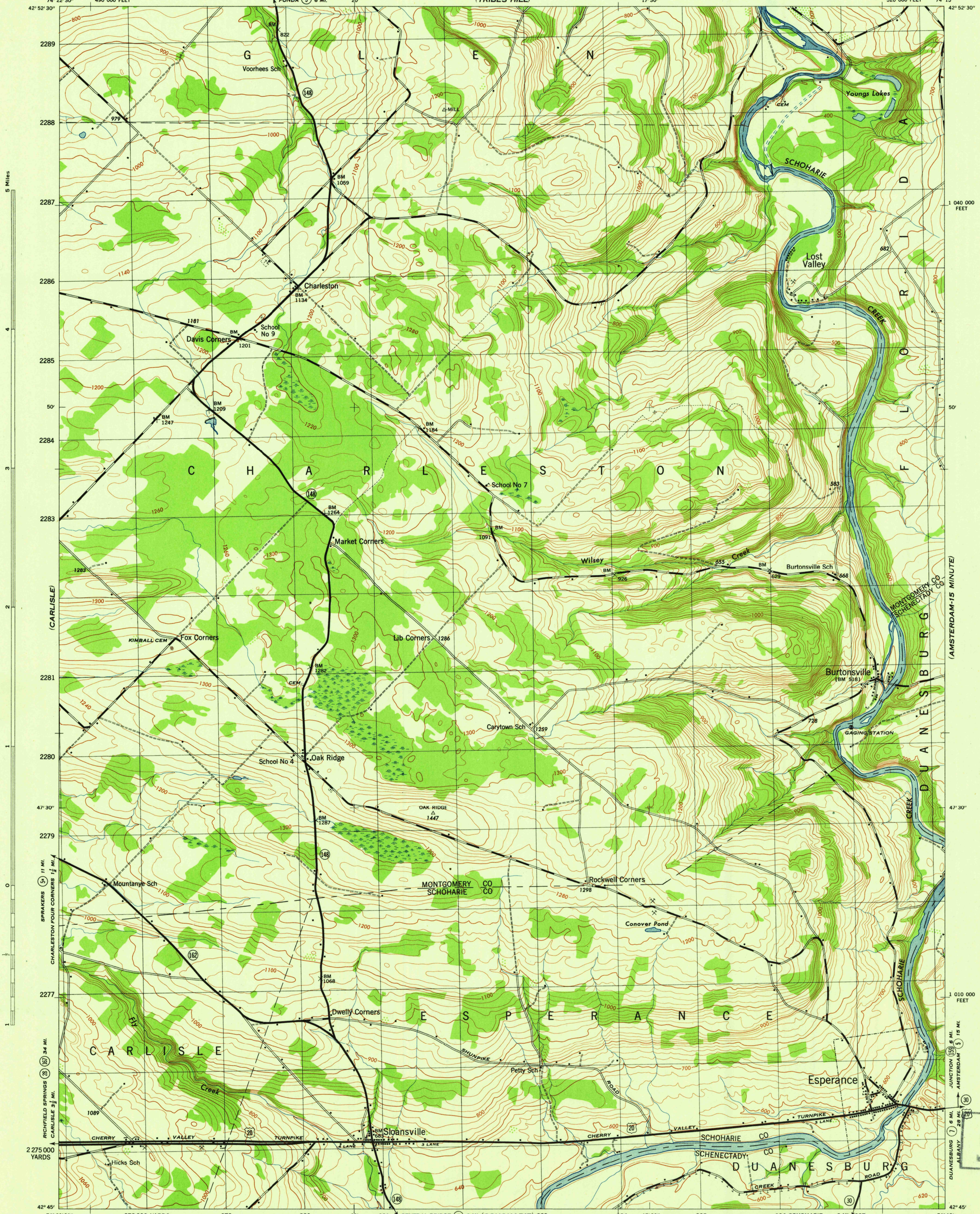
(RANDALL)

NEW YORK
SCALE 1:31,680

WAR DEPARTMENT
CORPS OF ENGINEERS, U. S. ARMY

ESPERANCE QUADRANGLE
7½-MINUTE SERIES

(AMSTERDAM)
15 MINUTE

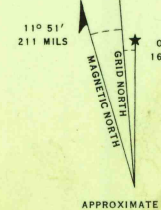
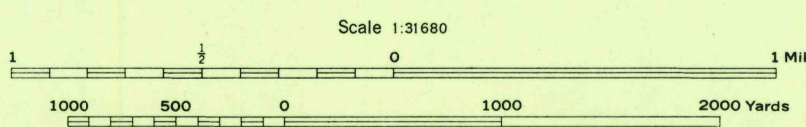


(COBLESKILL)

Map by Tennessee Valley Authority under direction of the
Chief of Engineers, U. S. Army, 1943.
Control by USCGS and TVA.
Topography by U. S. Geological Survey and Tennessee Valley Authority
by Stereophotogrammetric methods (Multiplex).
Field completion surveys by TVA.
Wide-angle photography for TVA, 1942.
Polyconic projection, 1927 North American datum.

ROAD CLASSIFICATION
1943
Dependable hard-surface,
heavy-duty road. U. S. Route (20)
Secondary, hard-surface,
all-weather road. State Route (7)
Dirt road. Lane 4 Lane
More than two lanes indicated by note along road with tick at point of change.

THIS MAP COMPLIES WITH THE NATIONAL STANDARD MAP ACCURACY REQUIREMENTS.



USGS
Historical File
Topographic Division

ESPERANCE, N. Y.
N4245-W7415/7.5
EDITION OF 1946

U.S. ARMY
FILE COPY
Inspection and Editing

(GALLUPVILLE)