

(ROCHESTER EAST)

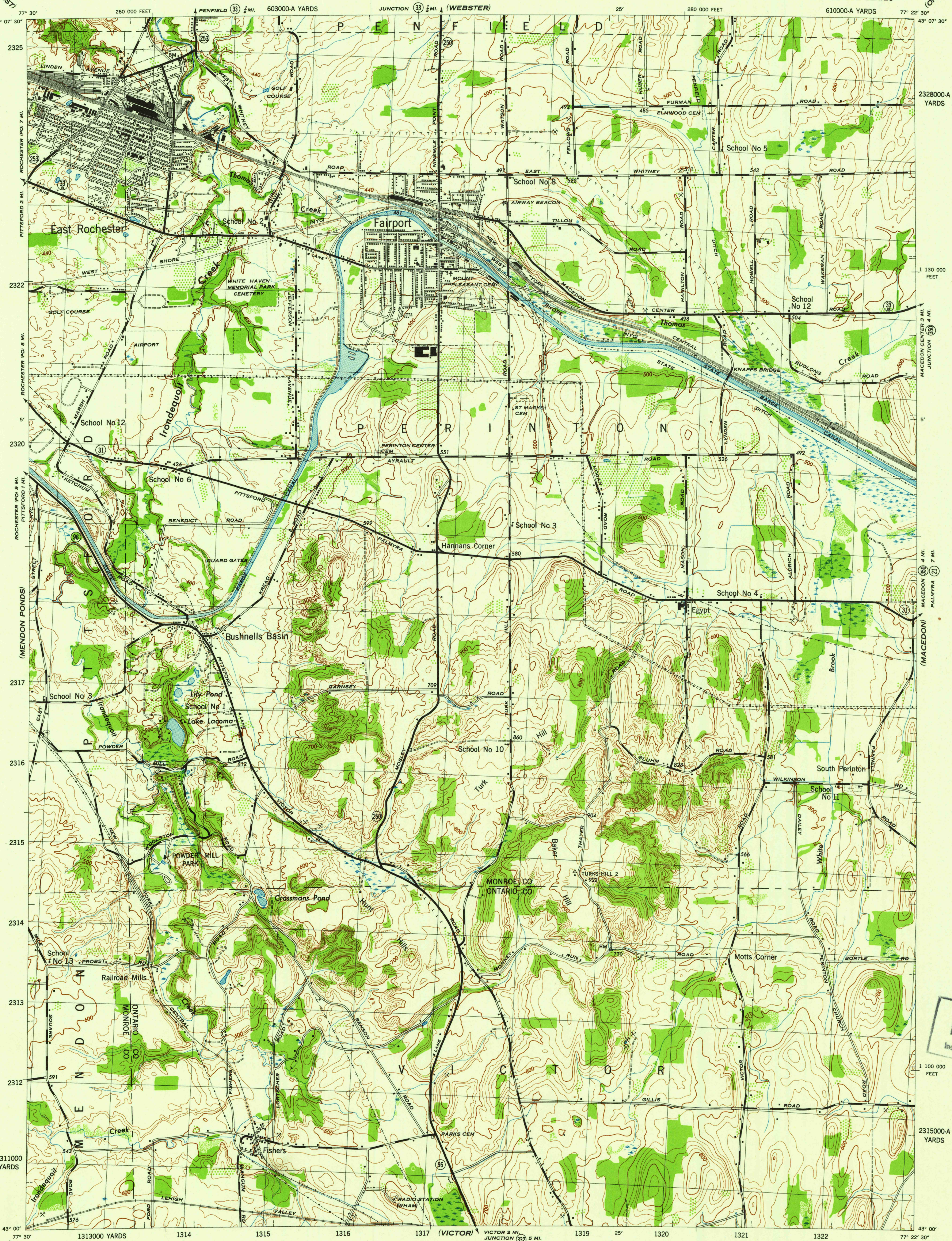
NEW YORK 1:31,680

WAR DEPARTMENT
CORPS OF ENGINEERS, U. S. ARMY

FAIRPORT QUADRANGLE

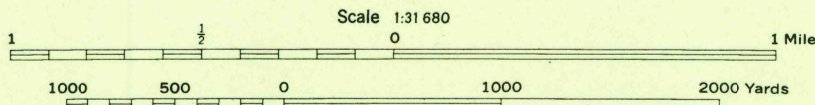
7 1/2-MINUTE SERIES

(ONTARIO)



Map by Tennessee Valley Authority under direction of the Chief of Engineers, U. S. Army, 1943
Topography and culture revision by U. S. Geological Survey and Tennessee Valley Authority by stereophotogrammetric methods (Multiple) 1943
Topography in Monroe Co. area by USGS plane-table surveys, 1932.
Control by USGS, USGS, and TVA.
Field completion surveys by TVA.
Wide-angle photography for TVA, 1942.
Polyconic projection. 1927 North American datum.

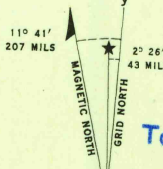
ROAD CLASSIFICATION
Dependable hard-surface, heavy-duty road. ——— U. S. Route 31
Secondary, hard-surface, all-weather road. ——— State Route 77
More than two lanes indicated by note along road with tick at point of change. 3 LANE 4 LANE



CONTOUR INTERVAL 20 FEET
DATUM IS MEAN SEA LEVEL

ONE THOUSAND YARD GRID COMPUTED FROM "GRID SYSTEM FOR PROGRESSIVE MAPS IN THE U. S." ZONE B, U. S. C. & G. S. SPECIAL PUBLICATION NO. 59
THE "X" AND "Y" ARE INDICATED BY MARKING TIES
THE LAST THREE DIGITS OF THE GRID NUMBERS ARE OMITTED
TEN THOUSAND FOOT GRID BASED ON NEW YORK PLANE COORDINATE SYSTEM, CENTRAL ZONE
NOTE: OFFICERS USING THIS MAP WILL MARK HEREON CORRECTIONS AND ADDITIONS WHICH COME TO THEIR ATTENTION AND MAIL DIRECT TO "THE CHIEF OF ENGINEERS, WASHINGTON, D. C."

REPRODUCED BY THE TENNESSEE VALLEY AUTHORITY
AND NO. 120035



USGS
Historical File
Topographic Division

WOODLAND CLASSIFICATION
Dense woodland
Dense brush
Scattered brush and trees
Orchard
Vineyard

FAIRPORT, N. Y.
N4300-W722.5/7.5
EDITION OF 1943

(HONEOYE FALLS)

U.S.G.S.
FILE COPY
INSPECTION AND EDITING

(CANANDAIGUA)