

(NEVERSINK)
1:62,500

NEW YORK 1:31,680

WAR DEPARTMENT
CORPS OF ENGINEERS, U. S. ARMY

FIRST EDITION-AMS 2

LACKAWACK QUADRANGLE
7.5 MINUTE SERIES

(WEST SHOKAN)

5 Miles

4 Miles

3 Miles

2 Miles

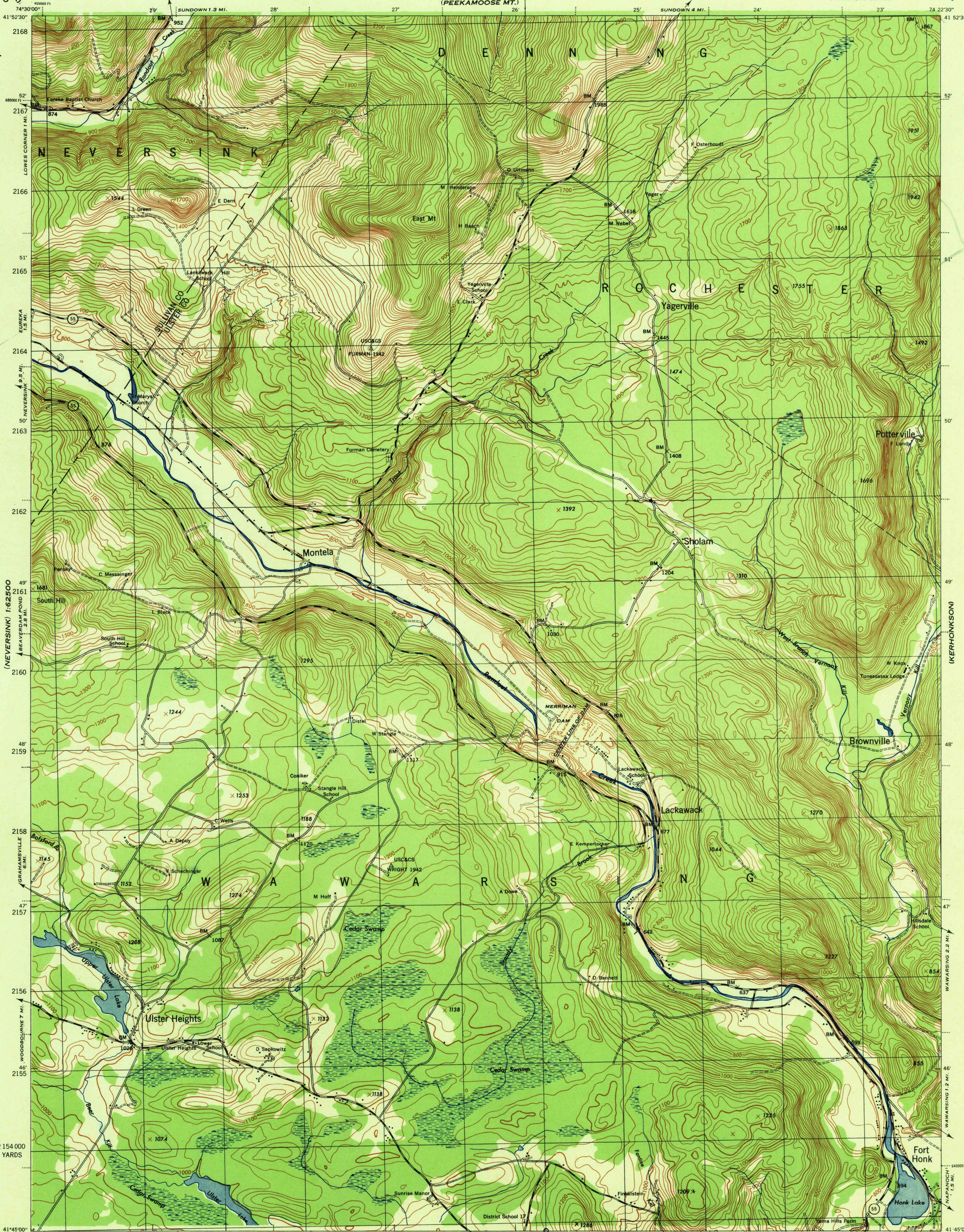
1 Miles

0 Miles

1 Miles

1 Miles

1 Miles

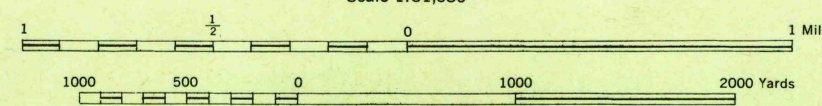


(MONTICELLO)
1:62,500

First Edition (AMS 1), 1943; revised (AMS 2), 1944.
Prepared under the direction of the Chief of Engineers,
U. S. Army, 1942.
Compiled by Fairchild Aerial Surveys, Inc.,
Los Angeles, California.
Topography by Fairchild Aerial Surveys, Inc.,
by Stereophotogrammetric Process.
Control by U. S. Coast and Geodetic Survey.
Aerial Photography by Fairchild Aerial Surveys, Inc., 1942.
Polyconic Projection, North American Datum 1927.

ROAD CLASSIFICATION 1943

Dependable hard-surface, heavy-duty road. Local-surface gravel, dry weather road. U. S. Route State Route 3 LANE 1 4 LANE
Secondary, hard-surface, all-weather road. Dirt road. More than two lanes indicated by note along road with tick at point of change.



CONTOUR INTERVAL 20 FEET
DATUM IS MEAN SEA LEVEL

THOUSAND YARD GRID COMPUTED FROM "GRID SYSTEM FOR PROGRESSIVE MAPS
IN THE U. S. 'ZONE' A", U. S. G. & S. SPECIAL PUBLICATION NO. 99
THE LAST THREE DIGITS OF THE GRID NUMBERS ARE OMITTED
THE STATE GRID IS INDICATED AT 800 FOOT INTERVALS
NOTE: OFFICERS USING THIS MAP WILL HAVE NEED FOR CORRECTIONS AND ADDITIONS WHICH COME
TO THEIR ATTENTION AND MAIL DIRECT TO "THE CHIEF OF ENGINEERS, WASHINGTON, D. C."

APPROXIMATE MEAN DECLINATION 1942
FOR CENTER OF SHEET
ANNUAL MAGNETIC CHANGE 0'

Use diagram only to obtain numerical values.
To determine magnetic north line, connect the
pivot point "P" on the south edge of the map
with the value of the angle between grid
and magnetic north, as plotted on the degree
scale at the north edge of the map.

LACKAWACK, N. Y.
N4145-W7422.5/7.5

USGS
Historical File
Topographic Division

U. S. G. S.
FILE COPY
Inspection and Editing

U. S. G. S.
FILE COPY
Inspection and Editing