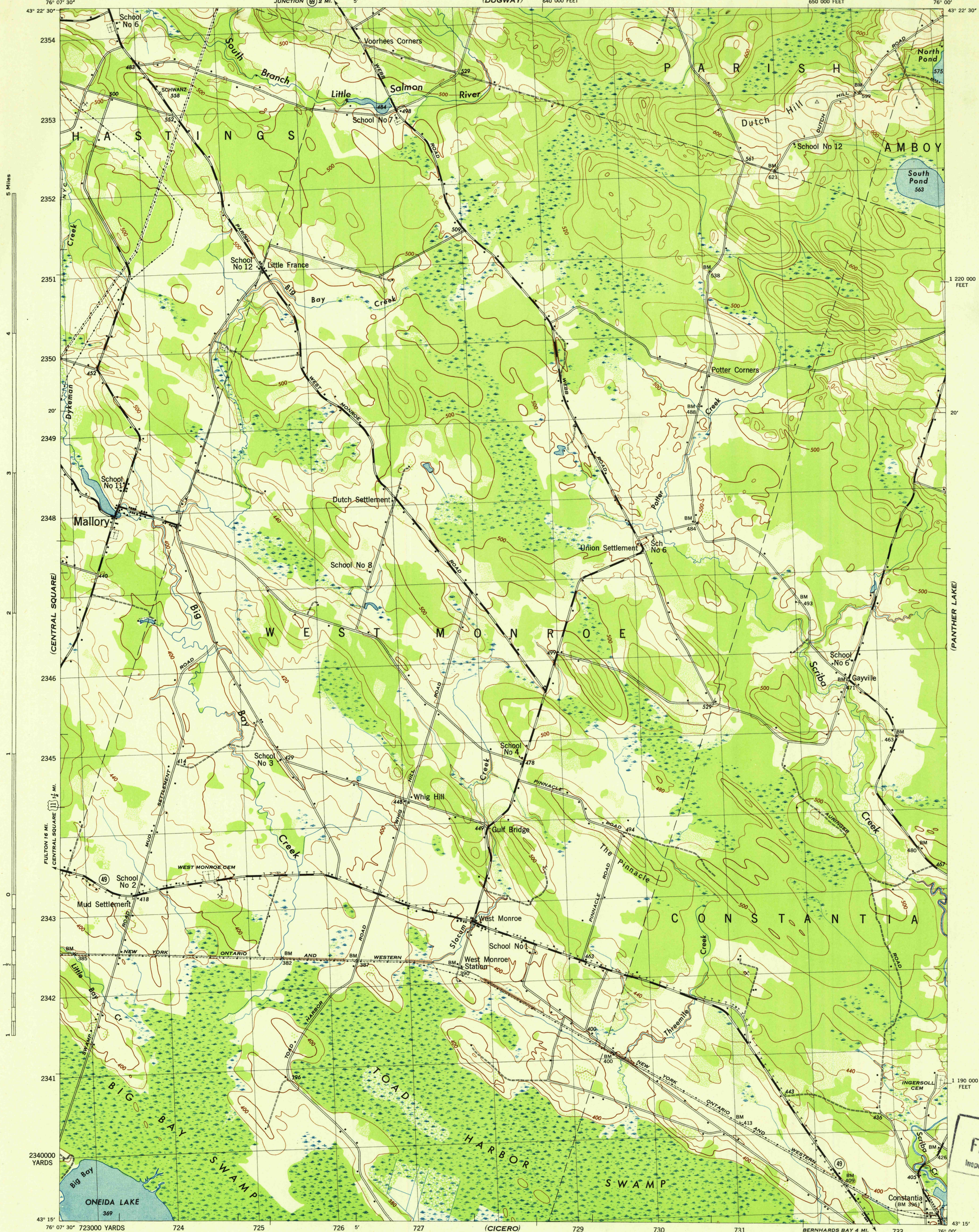


NEW YORK 1:31,680
(OSWEGO COUNTY)

WAR DEPARTMENT
CORPS OF ENGINEERS, U. S. ARMY

MALLORY QUADRANGLE
7½-MINUTE SERIES

(WILLIAMSTOWN)



U.S.G.S.
FILE COPY
Inspection and Editing.

Map of Tennessee Valley Authority under direction of the
Chief of Engineers, U. S. Army, 1943.
Control by U.S.C.G.S., U.S.G.S., and T.V.A.
Topography by U. S. Geological Survey and Tennessee Valley Authority
by Stereophotogrammetric methods (Multiplex).
Field completion surveys by T.V.A.
Wide-angle photography by T.V.A., 1942.
Polyconic projection. 1927 North American datum.
ROAD CLASSIFICATION
Dependable hard-surface,
heavy-duty road. Loose-surface graded,
dry weather road. U. S. Route 24
Secondary, hard-surface,
all-weather road. Dirt road. State Route 49
More than two lanes indicated by note along road with tick at point of change. 2 LANE 4 LANE
THIS MAP COMPLIES WITH THE NATIONAL STANDARD MAP ACCURACY REQUIREMENTS.

Scale 1:31,680
1 000 500 0 1000 2000 Yards
CONTOUR INTERVAL 20 FEET
DATUM IS MEAN SEA LEVEL
ONE THOUSAND YARD GRID COMPUTED FROM "GRID SYSTEM FOR PROGRESSIVE MAPS
IN THE U. S.," ZONE A, U. S. C. & G. S. SPECIAL PUBLICATION NO. 59
THE LAST THREE DIGITS OF THE GRID NUMBERS ARE OMITTED
TEN THOUSAND FOOT GRID BASED ON NEW YORK PLANE COORDINATE SYSTEM, CENTRAL ZONE
NOTE: DRIVERS USING THIS MAP WILL MARK HAZARD CORRECTIONS AND ADDITIONS WHICH ONE
TO THEIR ATTENTION AND MAIL DIRECT TO "THE CHIEF OF ENGINEERS, WASHINGTON, D. C."

REPRODUCED BY THE TENNESSEE VALLEY AUTHORITY
AMS NO. 120145
WOODLAND CLASSIFICATION
Dense woodland
Dense brush
Scattered brush and trees
Orchard
Vineyard
USGS
Historical File
Topographic Division
MALLORY, N. Y.
N4315-W7600/7.5
EDITION OF 1943