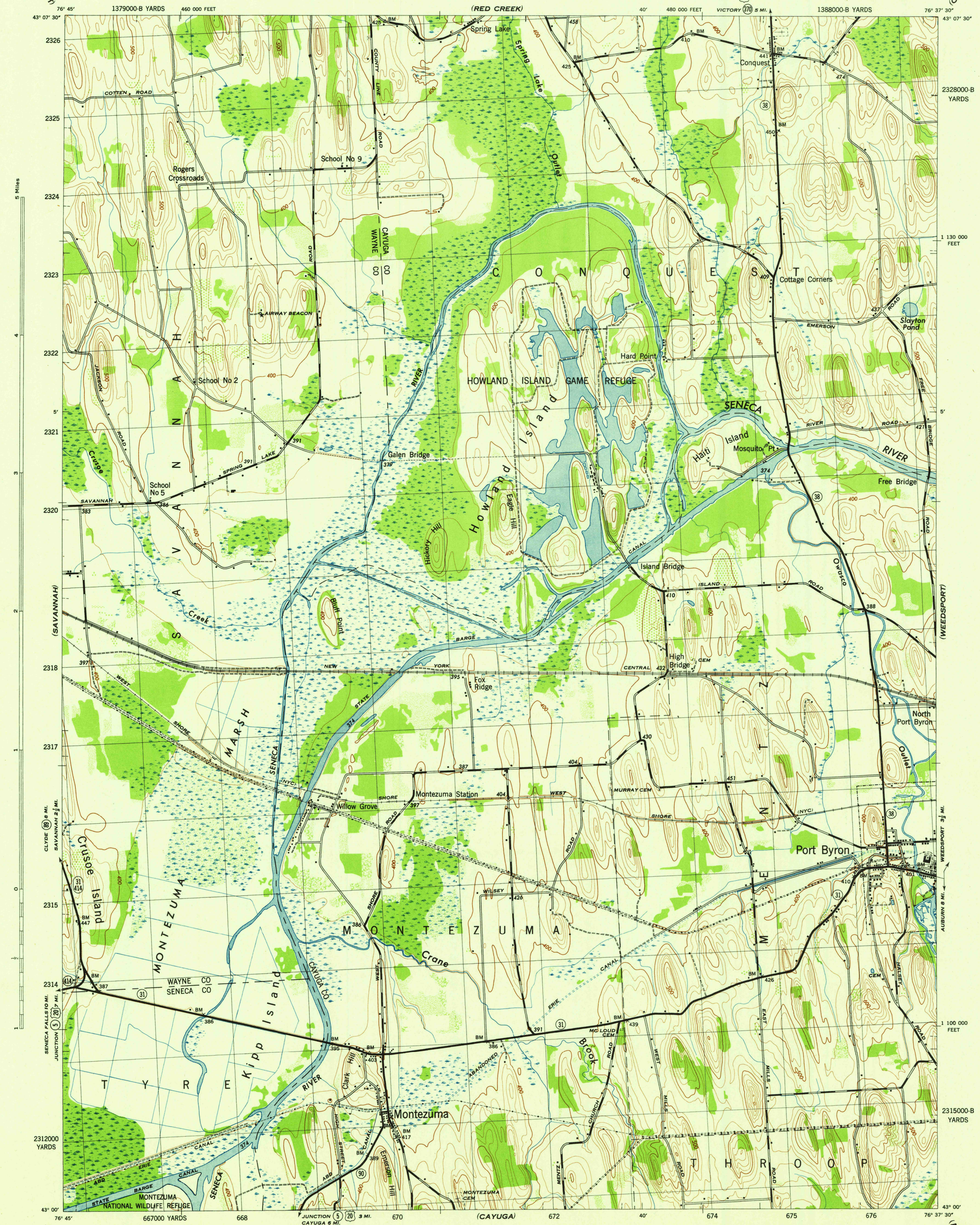


NEW YORK 1:31,680

WAR DEPARTMENT
CORPS OF ENGINEERS, U. S. ARMY

MONTEZUMA QUADRANGLE
7 1/2 - MINUTE SERIES

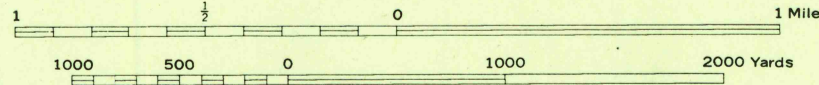


Maped by Tennessee Valley Authority under direction of the
Chief of Engineers, U. S. Army, 1942.
Control by USGS, 1908, and TVA.
Topography by U. S. Geological Survey and Tennessee Valley Authority
by Stereophotogrammetric methods (Multiplex).
Field completion surveys by TVA, 1942.
Wide-angle photography by TVA, 1942.
Polyconic projection. 1927 North American datum.

ROAD CLASSIFICATION
Dependable hard-surface,
heavy-duty road. ——— U. S. Route (20)
Secondary, hard-surface,
light-duty road. ——— State Route (31)
More than two lanes indicated by note along road with tick at point of change. ——— LANE 4 LANE

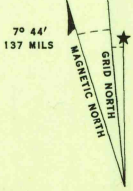
THIS MAP COMPLIES WITH THE NATIONAL STANDARD MAP ACCURACY REQUIREMENTS.

CONTOUR INTERVAL 20 FEET
DATUM IS MEAN SEA LEVEL



ONE THOUSAND YARD GRID COMPUTED FROM "GRID SYSTEM FOR PROGRESSIVE MAPS
IN THE U. S. - ZONE A, U. S. C. & G. S. SPECIAL PUBLICATION NO. 89
THE "X" AND "Y" IS INDICATED BY BARS TO THE
THE LAST THREE DIGITS OF THE GRID NUMBERS ARE OMITTED
TEN THOUSAND FOOT GRID BASED ON NEW YORK PLANE COORDINATE SYSTEM, CENTRAL ZONE
NOTE: OFFICERS USING THIS MAP WILL MAKE NECESSARY CORRECTIONS AND ADJUSTMENTS WHICH CORRE
TO THEIR ATTENTION AND RAIL DIRECT TO "THE CHIEF OF ENGINEERS, WASHINGTON, D. C."

REPRODUCED BY THE TENNESSEE VALLEY AUTHORITY 120054
USGS
Historical File
Topographic Division



WOODLAND CLASSIFICATION
Dense woodland
Dense brush
Scattered brush and trees
Orchard
Vineyard

MONTEZUMA, N. Y.
N4300-W7637.5/7.5
EDITION OF 1943

U. S. A. S.
FILE COPY
Inspection and Editing