

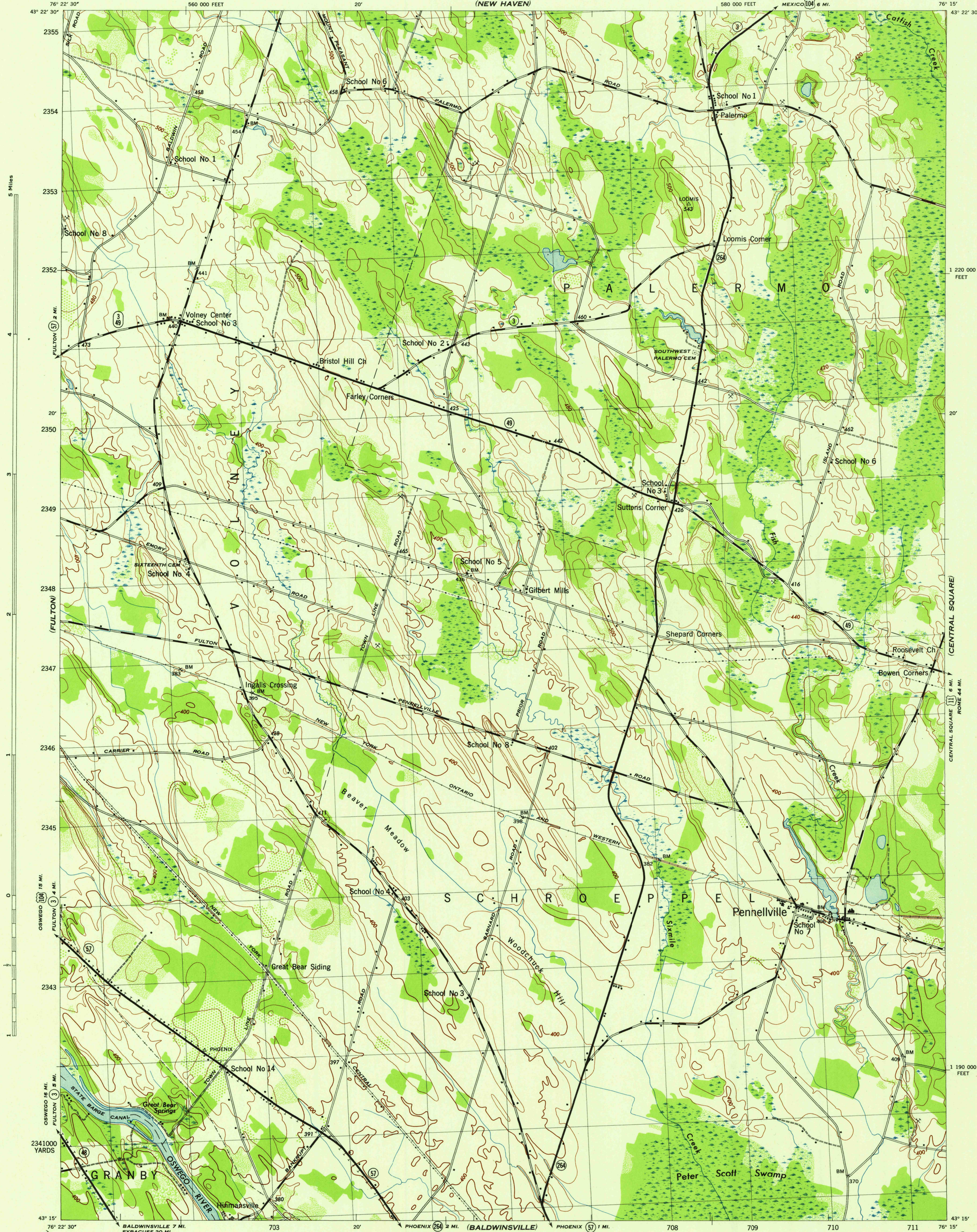
OSWEGO EAST

NEW YORK 1:31,680
(OSWEGO COUNTY)

WAR DEPARTMENT
CORPS OF ENGINEERS, U. S. ARMY

PENNELVILLE QUADRANGLE
7 1/2 - MINUTE SERIES

(MEXICO)



Maped by Tennessee Valley Authority under direction of the
Chief of Engineers, U. S. Army, 1943.
Control by USGS and TVA.
Topography by U. S. Geological Survey and Tennessee Valley Authority
by Stereophotogrammetric methods (Multiplex).
Field completion surveys by TVA.
Wide-angle photography for TVA, 1942.
Polyconic projection. 1927 North American datum.

ROAD CLASSIFICATION
Dependable hard-surface,
heavy-duty road. ——— U. S. Route 106
Loose-surface graded,
dry weather road. ——— U. S. Route 149
Secondary, hard-surface,
all-weather road. ——— State Route
Dirt road. ———
More than two lanes indicated by note along road with tick at point of change. 3 LANE 2 LANE

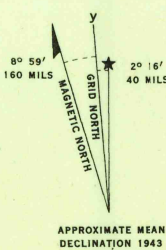
THIS MAP COMPLIES WITH THE NATIONAL STANDARD MAP ACCURACY REQUIREMENTS.

Scale 1:31,680
1 000 500 0 1000 2000 Yards
1 Mile

CONTOUR INTERVAL 20 FEET
DATUM IS MEAN SEA LEVEL

ONE THOUSAND YARD GRID COMPUTED FROM "GRID SYSTEM FOR PROGRESSIVE MAPS
IN THE U. S. ZONE A, U. S. C. & G. S. SPECIAL PUBLICATION NO. 59
THE LAST THREE DIGITS OF THE GRID NUMBERS ARE OMITTED
TEN THOUSAND FOOT GRID BASED ON NEW YORK PLANE COORDINATE SYSTEM, CENTRAL ZONE
NOTE: OFFICIALS USING THIS MAP WILL MAKE NECESSARY CORRECTIONS AND ADJUSTMENTS
TO THEIR ATTENTION AND MAIL DIRECT TO "THE CHIEF OF ENGINEERS, WASHINGTON, D. C."

REPRODUCED BY THE TENNESSEE VALLEY AUTHORITY
AWS NO. 120154



WOODLAND CLASSIFICATION
Dense woodland
Dense brush
Scattered brush and trees
Orchard
Vineyard

PENNELVILLE, N. Y.
N4315-W7615/7.5
EDITION OF 1943