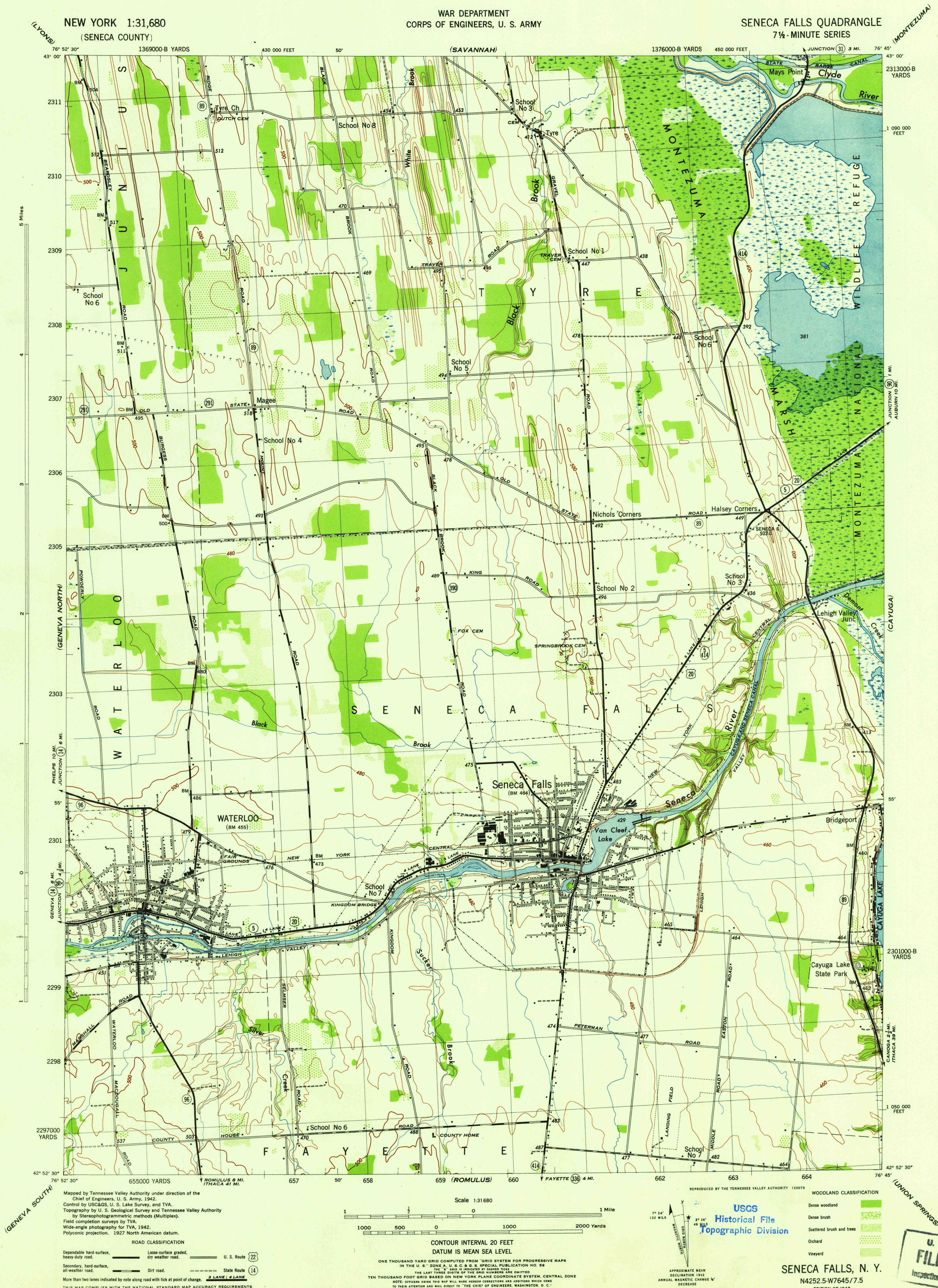


NEW YORK 1:31,680
(SENECA COUNTY)

WAR DEPARTMENT
CORPS OF ENGINEERS, U. S. ARMY

SENECA FALLS QUADRANGLE
7 1/2-MINUTE SERIES



Maped by Tennessee Valley Authority under direction of the Chief of Engineers, U. S. Army, 1942.
Control by USCGS, U. S. Lake Survey, and TVA.
Topography by U. S. Geological Survey and Tennessee Valley Authority by Stereophotogrammetric methods (Multiplex).
Field completion surveys by TVA.
Wide-angle photography for TVA, 1942.
Polyconic projection. 1927 North American datum.

ROAD CLASSIFICATION
Dependable hard-surface, heavy-duty road. ——— U. S. Route
Secondary, hard-surface, all-weather road. ——— State Route
More than two lanes indicated by note along road with tick at point of change. ——— 3 LANE 4 LANE
THIS MAP COMPLIES WITH THE NATIONAL STANDARD MAP ACCURACY REQUIREMENTS.

Scale 1:31,680
1 000 500 0 1000 2000 Yards
CONTOUR INTERVAL 20 FEET
DATUM IS MEAN SEA LEVEL
ONE THOUSAND YARD GRID COMPUTED FROM "GRID SYSTEM FOR PROGRESSIVE MAPS" IN THE U. S. ZONE A, U. S. G. S. S. SPECIAL PUBLICATION NO. 59.
THE "B" AND "C" GRID IS PRINTED BY DASHED LINES.
THE LAST THREE DIGITS OF THE GRID NUMBER ARE OMITTED.
TEN THOUSAND FOOT GRID BASED ON NEW YORK PLANE COORDINATE SYSTEM, CENTRAL ZONE.
NOTE: OFFICERS USING THIS MAP WILL HAVE BEEN CORRECTED AND DIVISION WILL CORRECT TO THEIR ATTENTION AND MAIL DIRECT TO "THE CHIEF OF ENGINEERS, WASHINGTON, D. C."

REPRODUCED BY THE TENNESSEE VALLEY AUTHORITY 120079
WOODLAND CLASSIFICATION
Dense woodland
Dense brush
Scattered brush and trees
Orchard
Vineyard

USGS
Historical File
Topographic Division

SENECA FALLS, N. Y.
N4252.5-W7645.7.5
EDITION OF 1943

U. S. G. S.
FILE COPY
Inspection and Editing