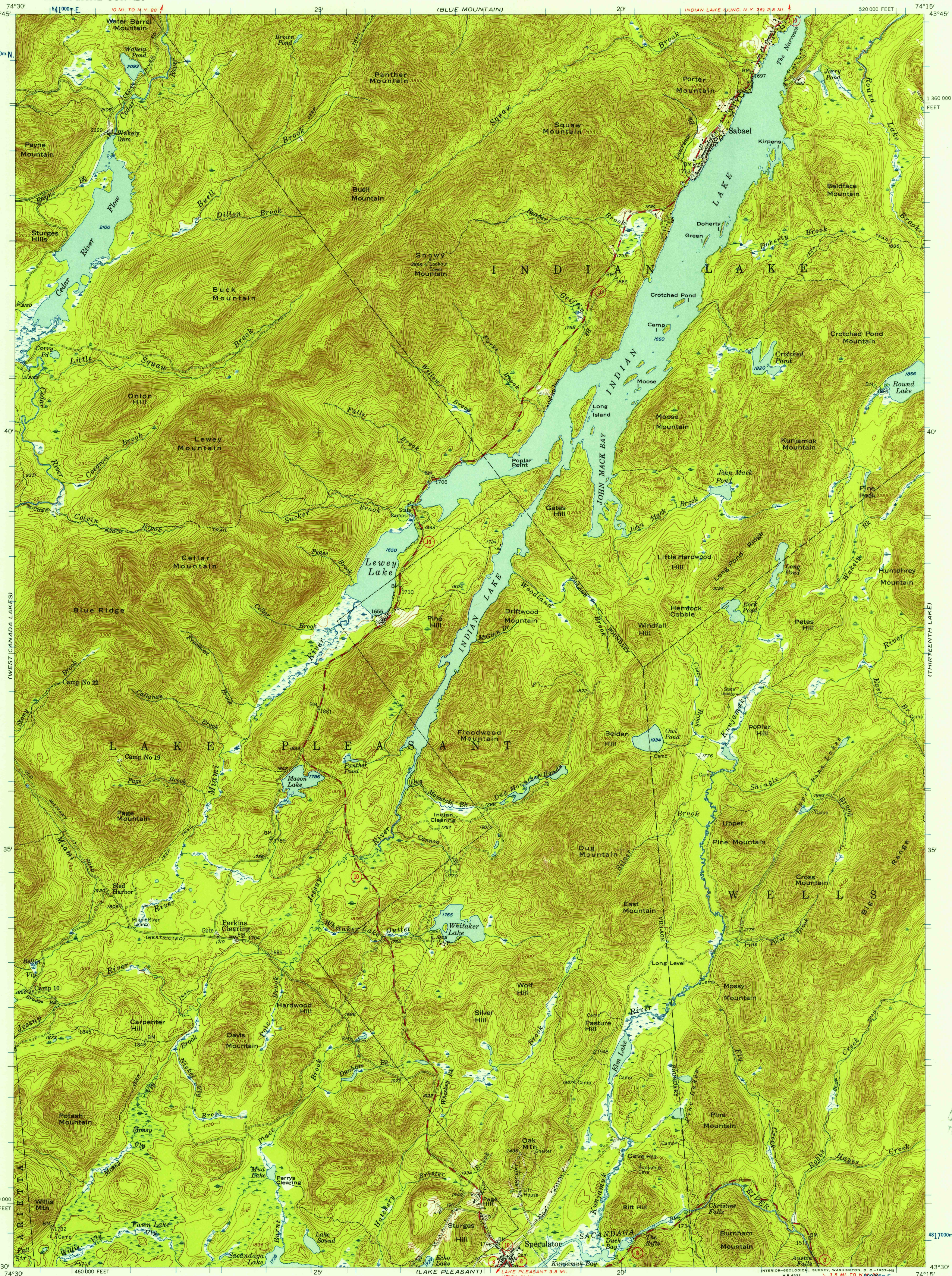


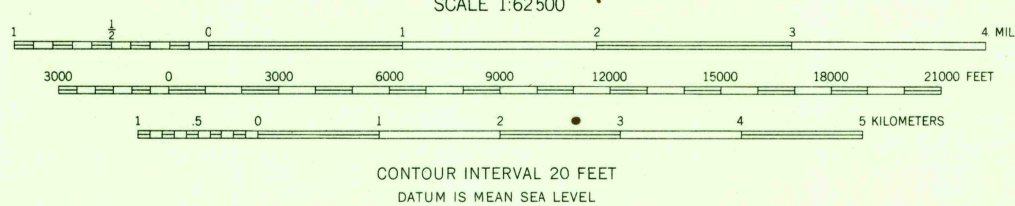
UNITED STATES
DEPARTMENT OF THE INTERIOR
GEOLOGICAL SURVEY

INDIAN LAKE QUADRANGLE
NEW YORK—HAMILTON CO.
15 MINUTE SERIES (TOPOGRAPHIC)



Mapped, edited, and published by the Geological Survey
Control by USGS and USC&GS
Topography from aerial photographs by photogrammetric methods. Aerial photographs taken 1953. Field check 1954
Polyconic projection. 1927 North American datum
10,000-foot grid based on New York coordinate system, east zone
1000 meter Universal Transverse Mercator Grid ticks.
zone 18, shown in blue
Entire area lies within the Adirondack State Park
Unchecked elevations are shown in brown

APPROXIMATE MEAN
DECLINATION, 1954



U.S.G.S.
Historical File
Topographic Division

ROAD CLASSIFICATION
Heavy-duty ——— Light-duty ———
Medium-duty ——— Unimproved dirt ———
U.S. Route ——— State Route ———

INDIAN LAKE, N. Y.
N 4330—W 7415/15

1954

THIS MAP COMPLIES WITH NATIONAL MAP ACCURACY STANDARDS
FOR SALE BY U. S. GEOLOGICAL SURVEY, WASHINGTON 25, D. C.
A FOLDER DESCRIBING TOPOGRAPHIC MAPS AND SYMBOLS IS AVAILABLE ON REQUEST

U.S.G.S.
FILE COPY
TOPOGRAPHIC DIVISION

U.S.G.S.
FILE COPY
TOPOGRAPHIC DIVISION

FEB 13 1954

3105