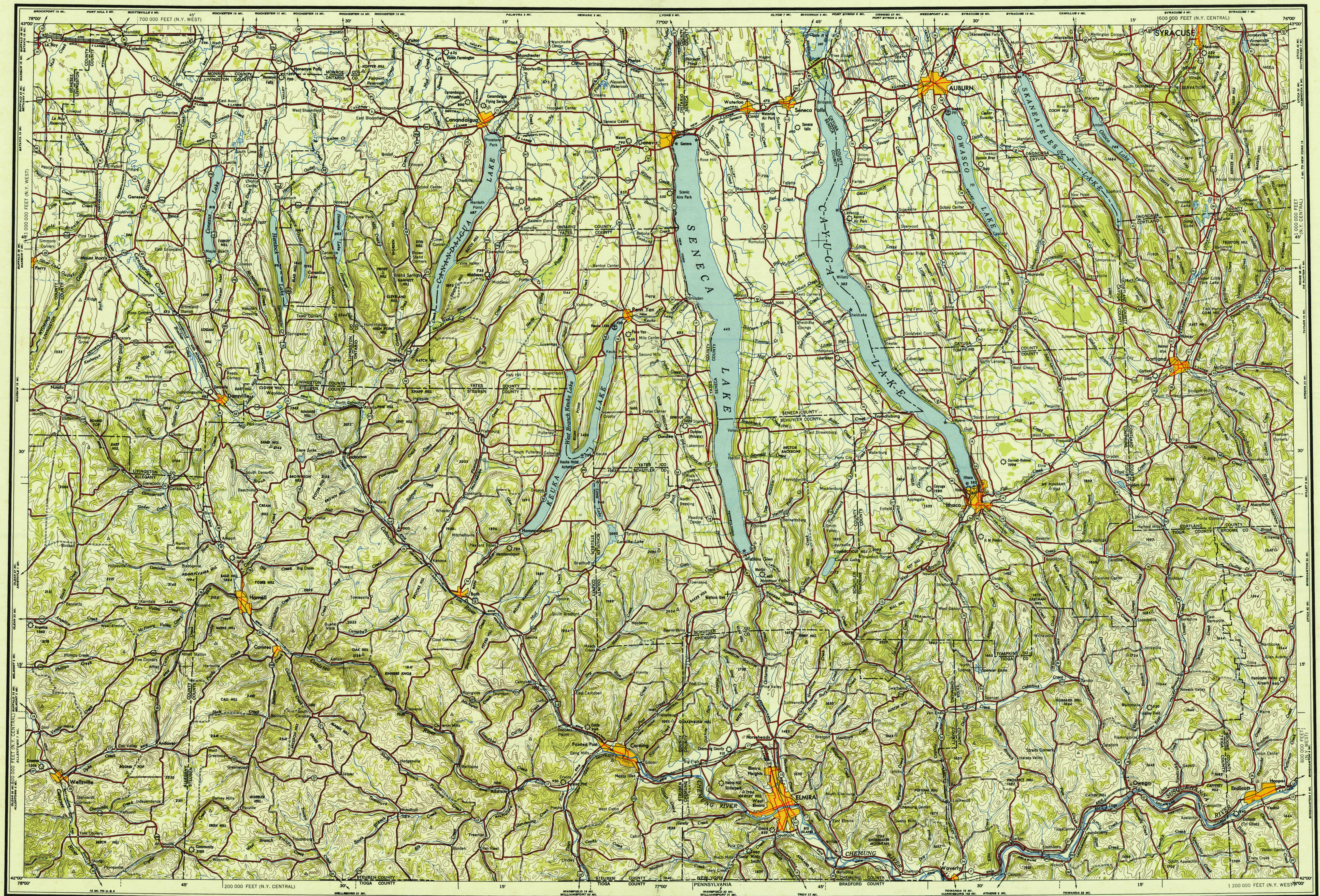


U.S.G.S.  
FILE COPY  
Inspection and Rating.AMS V501  
AMS 1

Prepared under the direction of the Chief of Engineers by the Corps of Engineers, U. S. Army Map Service (AM), Washington, D. C. Compiled in 1948 from United States Quadrangles 1:250,000, 1:250,000 and 1:62,500, U. S. Geological Survey and Corps of Engineers, 1893-1947; County Highway Maps, 1942; and intelligence data to 1948. Planimetric detail partially revised by photogrammetric methods. Aerial photograph, 1936-1943. Road and aeronautical data verified by state authorities, 1948. Control by U. S. Geological Survey and U. S. Coast and Geodetic Survey.

