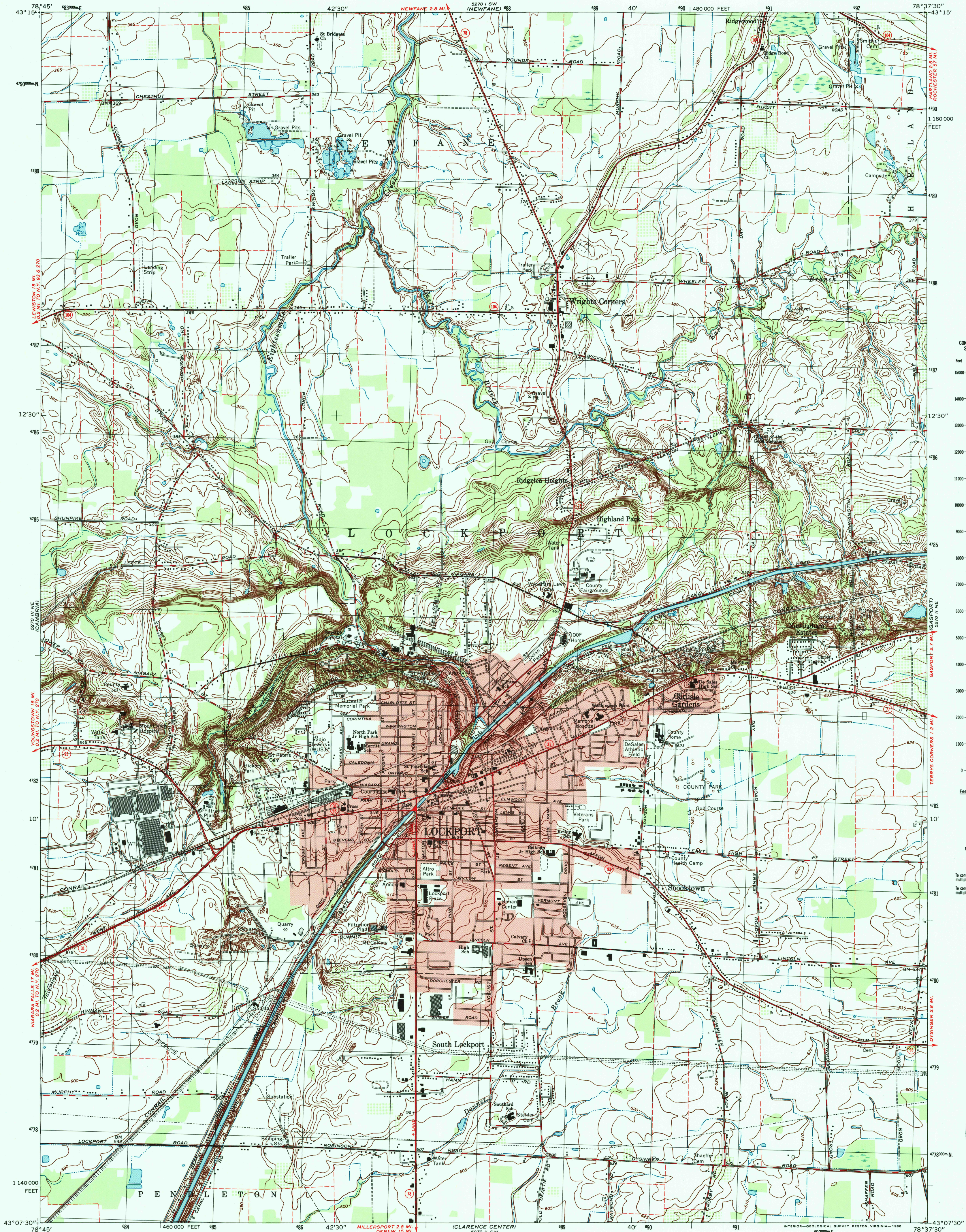


UNITED STATES  
DEPARTMENT OF THE INTERIOR  
GEOLOGICAL SURVEY

STATE OF NEW YORK  
DEPARTMENT OF TRANSPORTATION

LOCKPORT QUADRANGLE  
NEW YORK—NIAGARA CO.  
7.5 MINUTE SERIES (TOPOGRAPHIC)  
NW/4 LOCKPORT 15' QUADRANGLE



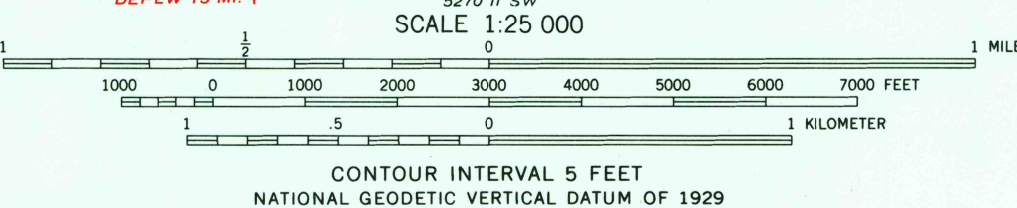
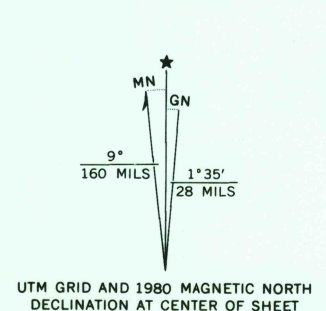
CONVERSION  
SCALES



Feet	Meters
1	0.3048
2	0.6096
3	0.9144
4	1.2192
5	1.5240
6	1.8288
7	2.1336
8	2.4384
9	2.7432
10	3.0480

To convert feet to meters  
multiply by 0.3048  
To convert meters to feet  
multiply by 3.2808

Mapped, edited, and published by the Geological Survey  
Control by USGS and NOS/NOAA  
Topography by photogrammetric methods from aerial  
photographs taken 1972. Field checked 1973. Map edited 1980  
Supersedes 1:24 000-scale map dated 1965  
Projection and 10,000-foot grid ticks: New York coordinate  
system, west zone (transverse Mercator)  
1000-meter Universal Transverse Mercator grid, zone 17  
1927 North American datum  
To place on the predicted North American Datum 1983  
move the projection lines 2 meters south and  
20 meters west as shown by dashed corner ticks  
Fine red dashed lines indicate selected fence and field lines where  
generally visible on aerial photographs. This information is unchecked  
Red tint indicates areas in which only landmark buildings are shown



THIS MAP COMPLIES WITH NATIONAL MAP ACCURACY STANDARDS  
FOR SALE BY U.S. GEOLOGICAL SURVEY  
DENVER, COLORADO 80225, OR RESTON, VIRGINIA 22092  
A FOLDER DESCRIBING TOPOGRAPHIC MAPS AND SYMBOLS IS AVAILABLE ON REQUEST



ROAD CLASSIFICATION  
Primary highway, hard surface ————  
Secondary highway, hard surface ————  
Unimproved road ————  
Interstate Route ————  
U.S. Route ————  
State Route ————

LOCKPORT, N. Y.  
NW/4 LOCKPORT 15' QUADRANGLE  
N4307.5—W7837.5/7.5  
1980  
DMA 5270 II NW—SERIES V821

