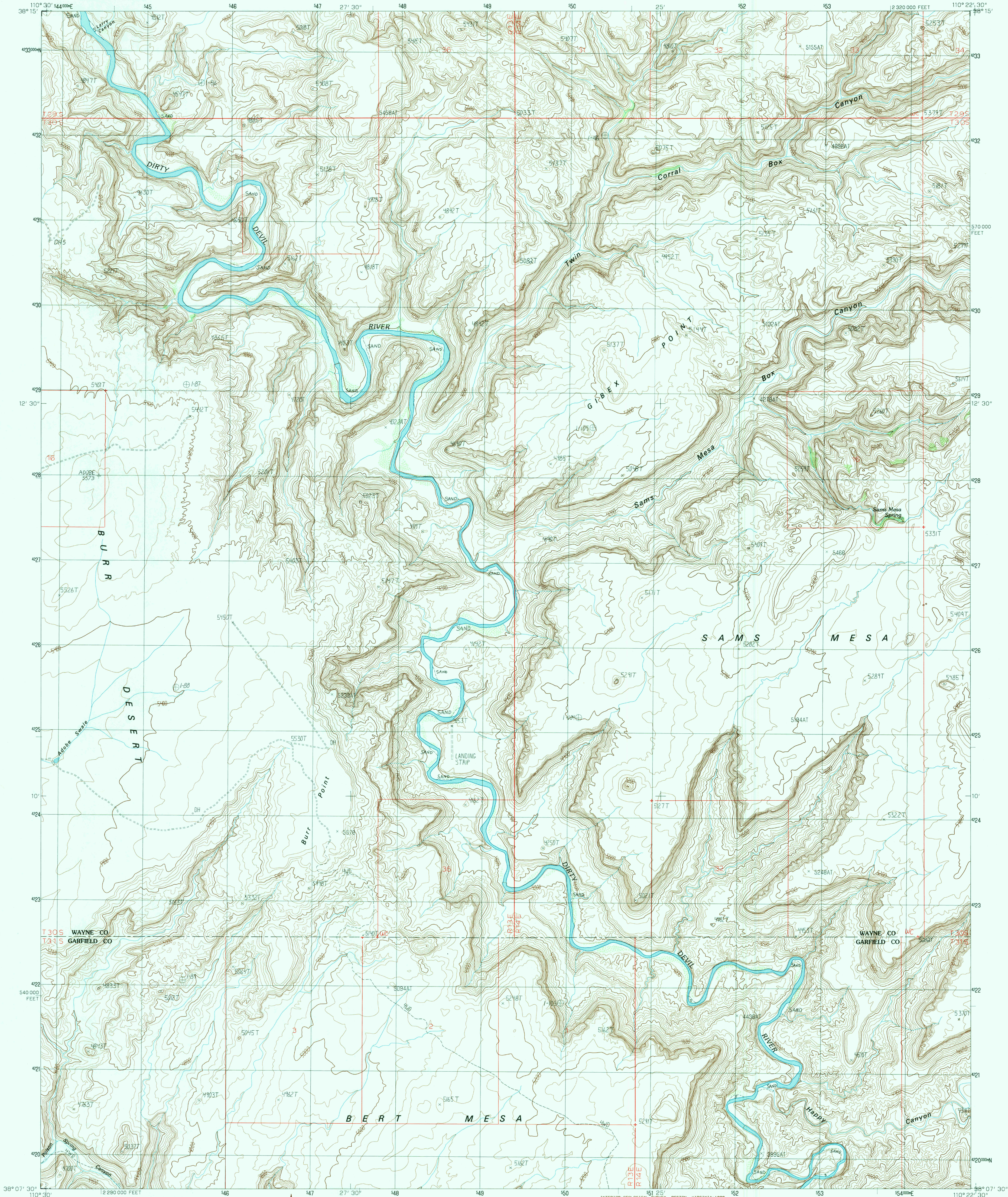


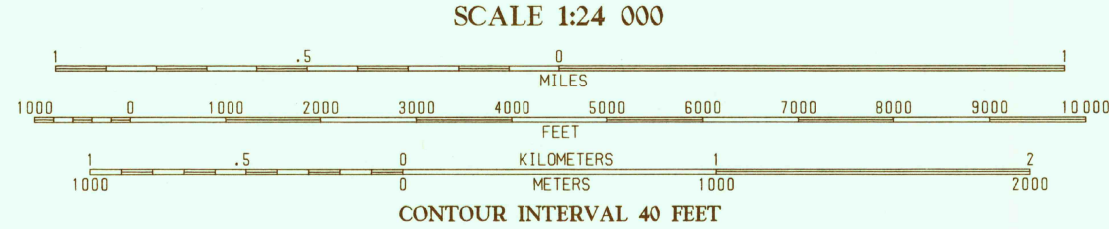
UNITED STATES
DEPARTMENT OF THE INTERIOR
GEOLOGICAL SURVEY

BURR POINT QUADRANGLE
UTAH
7.5 MINUTE SERIES (TOPOGRAPHIC)



PRODUCED BY THE UNITED STATES GEOLOGICAL SURVEY
CONTROL BY USGS, NOS/NOAA
COMPILED FROM AERIAL PHOTOGRAPHS TAKEN 1981
FIELD CHECKED 1984 MAP EDITED
PROJECTION LAMBERT CONFORMAL CONIC
GRID: 1000-METER UNIVERSAL TRANSVERSE MERCATOR ZONE 12
1000-FOOT STATE GRID TICKS UTAH, SOUTH ZONE
UTM GRID DECLINATION 02°1' EAST
1988 MAGNETIC NORTH DECLINATION 13' EAST
VERTICAL DATUM NATIONAL GEODETIC VERTICAL DATUM OF 1959
HORIZONTAL DATUM 1927 NORTH AMERICAN DATUM
To place on the predicted North American Datum of 1983,
move the projection lines as shown by dashed corner ticks
(5 meters north and 62 meters east)
There may be private inholdings within the boundaries of any
Federal and State Reservations shown on this map
Where omitted, land lines have not been established

PROVISIONAL MAP
Produced from original
manuscript drawings. Infor-
mation shown as of date of
photography.



To convert feet to meters multiply by .3048
To convert meters to feet multiply by 3.2808
THIS MAP COMPLIES WITH NATIONAL MAP ACCURACY STANDARDS
FOR SALE BY U.S. GEOLOGICAL SURVEY, DENVER, COLORADO 80225
OR RESTON, VIRGINIA 22092

QUADRANGLE LOCATION			1 Angel Cove
1	2	3	2 Angel Point
			3 Rubbers River Flats
			4 Baking Shillet Knoll
4		5	5 The Pinnacle
			6 Turkey Knob
6	7	8	7 Star Canyon
			8 Fiddler Butte
ADJOINING 7.5' QUADRANGLE NAMES			

ROAD LEGEND
Improved Road
Unimproved Road
Trail
Interstate Route U.S. Route State Route
BURR POINT, UTAH
PROVISIONAL EDITION 1988
38110-B4-TT-024

USGS NHD HISTORICAL MAP
FEB 03 1989
REC'D FILE COPY