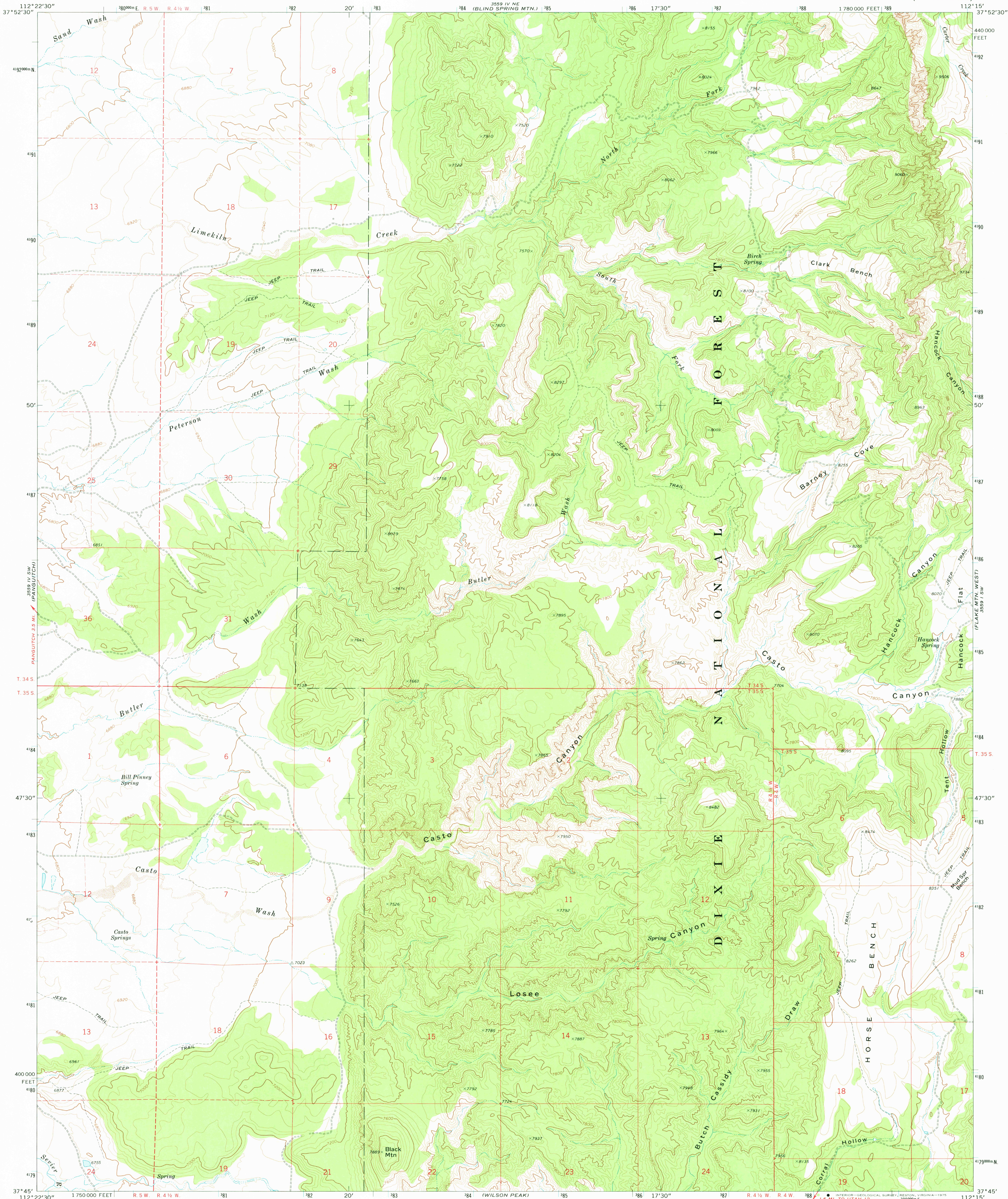


UNITED STATES
DEPARTMENT OF THE INTERIOR
GEOLOGICAL SURVEY

CASTO CANYON QUADRANGLE
UTAH—GARFIELD CO.
7.5 MINUTE SERIES (TOPOGRAPHIC)



Mapped, edited, and published by the Geological Survey
in cooperation with the Utah Geological and Mineral Survey

Control by USGS and NOS/NOAA

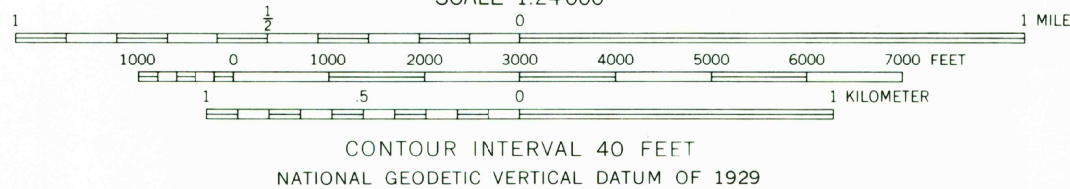
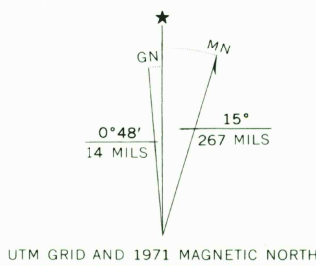
Topography by photogrammetric methods from aerial
photographs taken 1970. Field checked 1971

Projection and 10,000-foot grid ticks: Utah coordinate
system, south zone (Lambert conformal conic)

1000-meter Universal Transverse Mercator grid ticks,
zone 12, shown in blue. 1927 North American datum

Fine red dashed lines indicate selected fence lines

Where omitted, land lines have not been established



THIS MAP COMPLIES WITH NATIONAL MAP ACCURACY STANDARDS
FOR SALE BY U. S. GEOLOGICAL SURVEY, DENVER, COLORADO 80225, OR RESTON, VIRGINIA 22092
A FOLDER DESCRIBING TOPOGRAPHIC MAPS AND SYMBOLS IS AVAILABLE ON REQUEST

ROAD CLASSIFICATION
Primary highway, hard surface
Secondary highway, hard surface
Unimproved road
Interstate Route
U. S. Route
State Route
Light-duty road, hard or improved surface
Unimproved road



CASTO CANYON, UTAH
N3745-W11215/7.5

USGS
HISTORICAL FILE
TOPOGRAPHIC DIVISION

1971

AMS 3559 IV SE—SERIES V897

MAY 20 1975