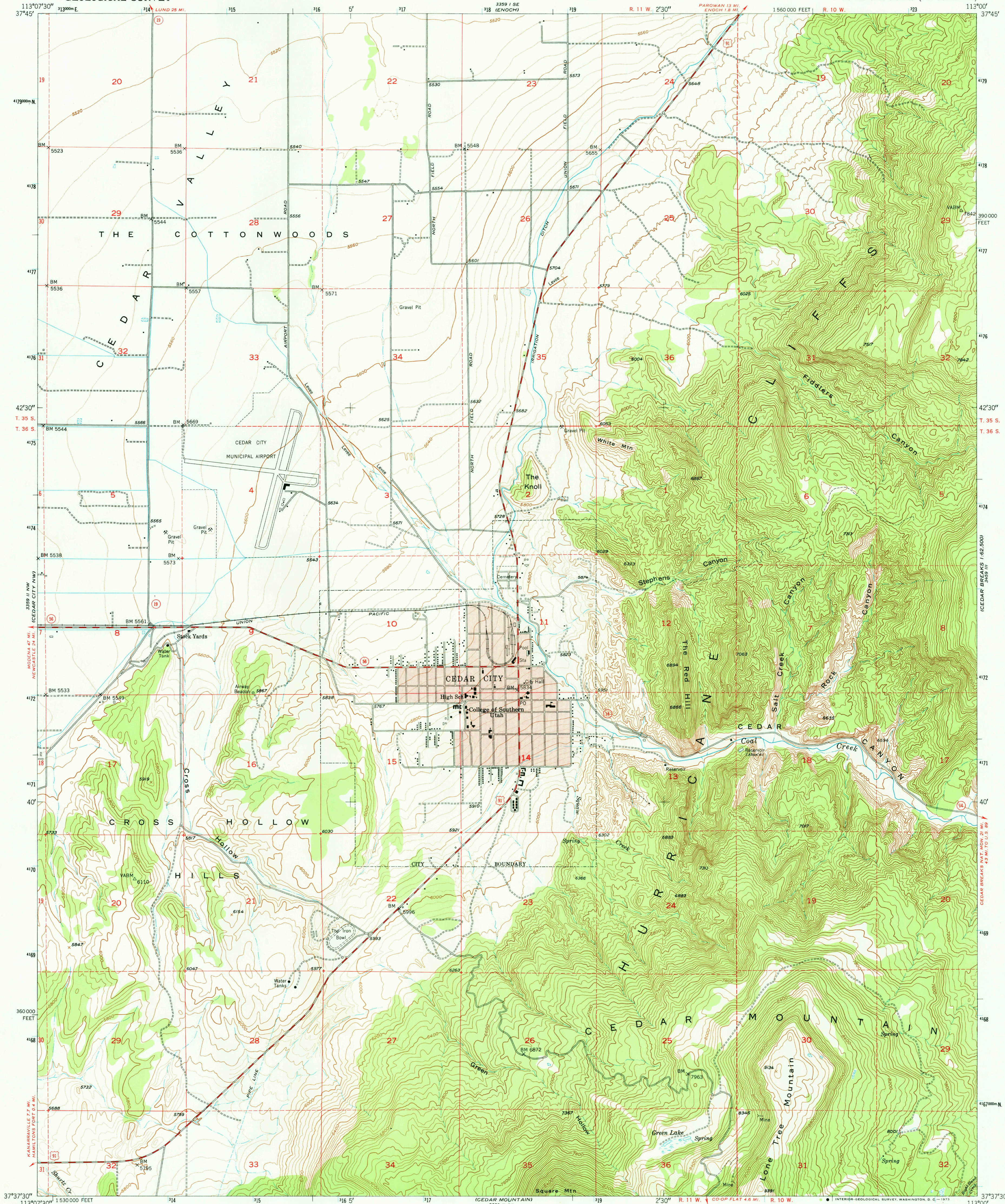
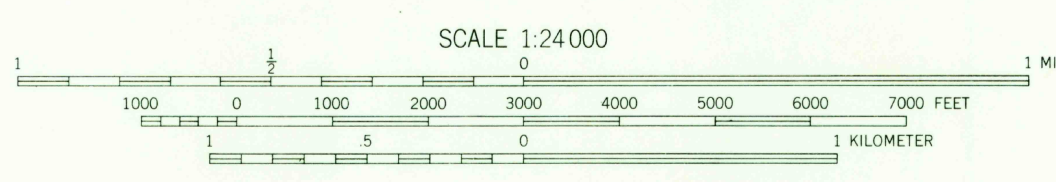


UNITED STATES
DEPARTMENT OF THE INTERIOR
GEOLOGICAL SURVEY

CEDAR CITY QUADRANGLE
UTAH-IRON CO.
7.5 MINUTE SERIES (TOPOGRAPHIC)



Mapped, edited, and published by the Geological Survey
Control by USGS, USC&GS, and State of Utah
Topography from aerial photographs by multiplex methods
and by plane-table surveys 1950
Aerial photographs taken 1948
Polyconic projection. 1927 North American datum
10,000-foot grid based on Utah coordinate system,
south zone
1000-meter Universal Transverse Mercator grid ticks,
zone 12, shown in blue
Red tint indicates area in which only
landmark buildings are shown
Dashed land lines indicate approximate location



CONTOUR INTERVAL 40 FEET
DOTTED LINES REPRESENT 10 FOOT CONTOURS
DATUM IS MEAN SEA LEVEL

THIS MAP COMPLIES WITH NATIONAL MAP ACCURACY STANDARDS
FOR SALE BY U.S. GEOLOGICAL SURVEY, DENVER, COLORADO 80225 OR WASHINGTON, D. C. 20242
A FOLDER DESCRIBING TOPOGRAPHIC MAPS AND SYMBOLS IS AVAILABLE ON REQUEST

ROAD CLASSIFICATION
Heavy-duty 4 LANE 6 LANE Light-duty
Medium-duty 4 LANE 6 LANE Unimproved dirt
U.S. Route State Route

CEDAR CITY, UTAH
N3737.5-W11300/7.5

1950

AMS 3359 II NE-SERIES V897

USGS
Historical File
Topographic Division
AUG 17 1977
2730