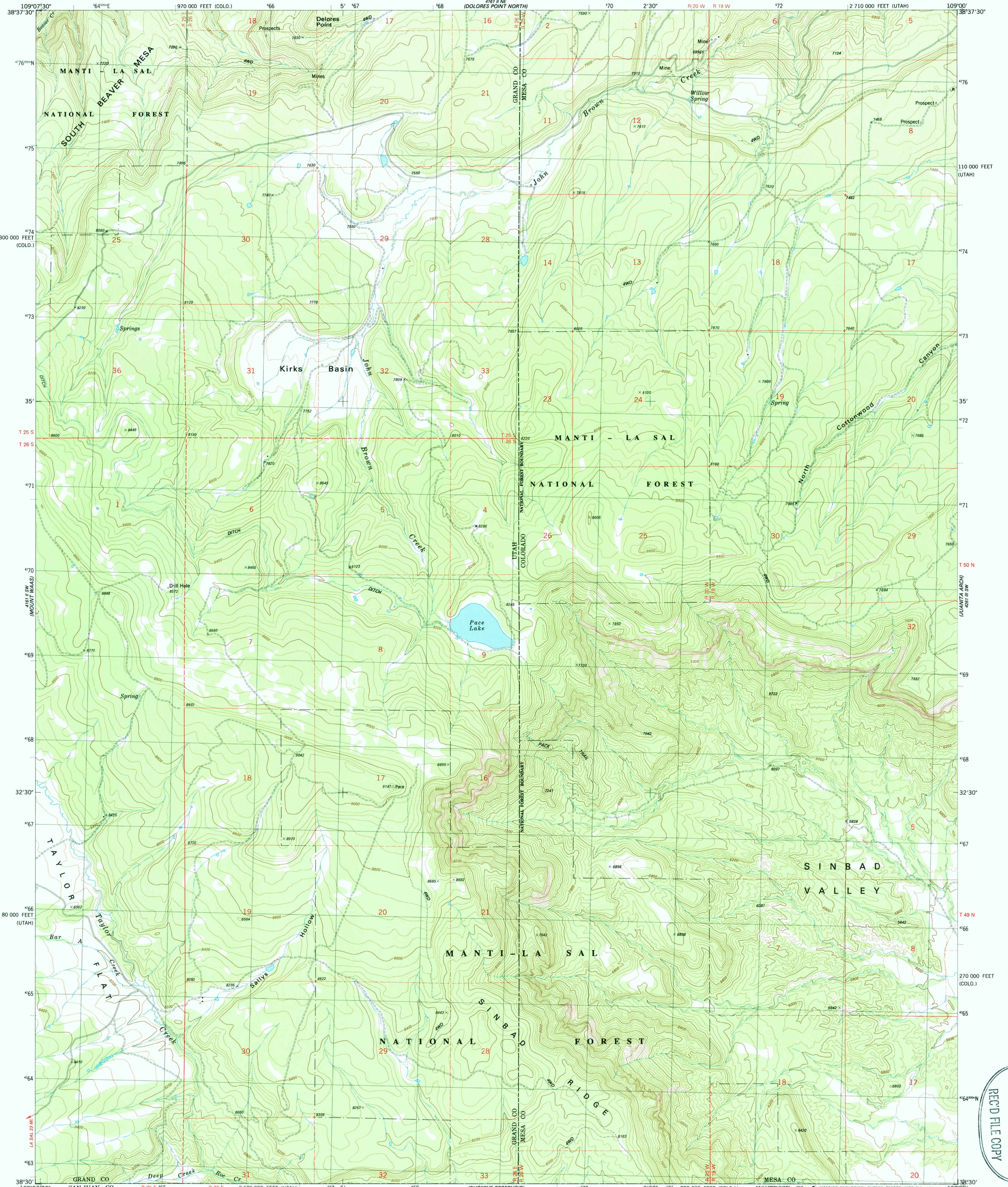


DOLORES VALLEY
(RESERVATION)

UNITED STATES
DEPARTMENT OF THE INTERIOR
GEOLOGICAL SURVEY

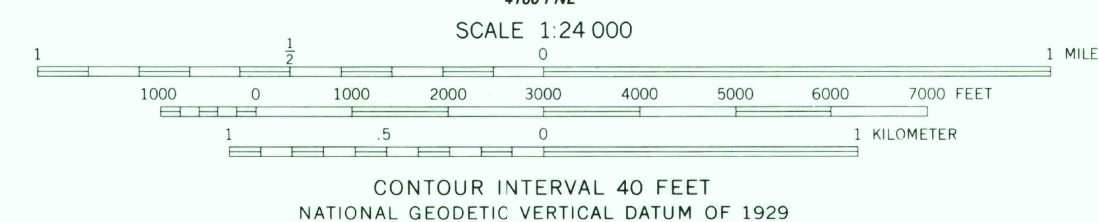
DOLORES POINT SOUTH QUADRANGLE
UTAH-COLORADO
7.5 MINUTE SERIES (TOPOGRAPHIC)
SE/4 POLAR MESA 15' QUADRANGLE

400 000 FEET (UTAH)
400 000 FEET (UTAH)



Mapped, edited, and published by the Geological Survey
Control by USGS and NOS/NOAA
Topography by photogrammetric methods from aerial photographs
taken 1980. Field checked 1981. Map edited 1985
Projection: Utah coordinate system, central zone
(Lambert conformal conic)
10,000-foot grid ticks based on Utah coordinate system,
central zone and Colorado coordinate system, central zone
1000-meter Universal Transverse Mercator grid, zone 12
1927 North American Datum
To place on the predicted North American Datum 1983
move the projection lines 5 meters north and
58 meters east as shown by dashed corner ticks
Where omitted, land lines have not been established or
are not shown because of insufficient data
Fine red dashed lines indicate selected fence lines

There may be private inholdings within the boundaries of
the National or State reservations shown on this map



ROAD CLASSIFICATION
Primary highway, hard surface
Secondary highway, hard surface
Unimproved road
Interstate Route
U. S. Route
State Route

DOLORES POINT SOUTH, UTAH-COLO.
SE/4 POLAR MESA 15' QUADRANGLE
38109-E1-TF-024
1985

DMA 4161 II SE-SERIES V897

USGS NHD HISTORICAL MAP
FEB 20 1986
REC'D FILE COPY