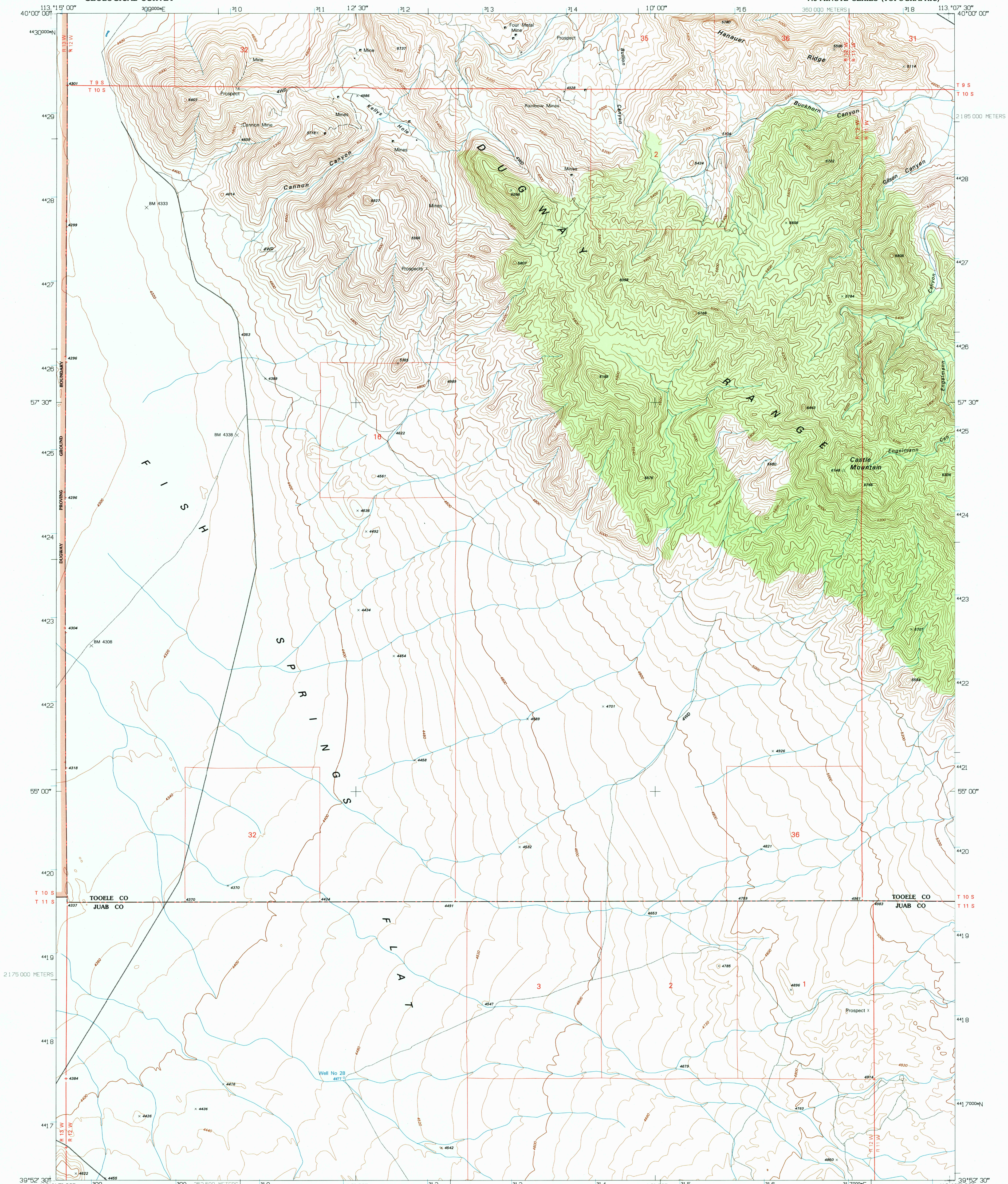
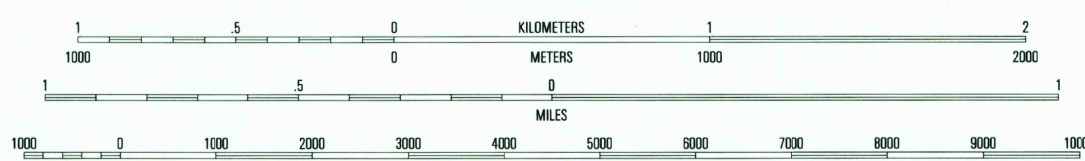
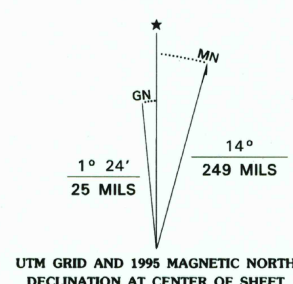


UNITED STATES
DEPARTMENT OF THE INTERIOR
GEOLOGICAL SURVEY

DUGWAY RANGE NW QUADRANGLE
UTAH
7.5-MINUTE SERIES (TOPOGRAPHIC)



Produced by the United States Geological Survey
Compiled from imagery dated 1951. Revised from imagery
dated 1993. PLSS current as of 1995. Survey control, contours
and elevations current as of 1995. Map edited 1995
North American Datum of 1983 (NAD 83). Projection and
blue 1000-meter ticks: Universal Transverse Mercator, zone 12
2500-meter ticks: Utah Coordinate System of 1983 (central zone)
North American Datum of 1927 (NAD 27) is shown by dashed
corner ticks. The values of the shift between NAD 83 and NAD 27
for 7.5-minute intersections are obtainable from National Geologic
Survey NADCON software
There may be private inholdings within the boundaries of
the National or State reservations shown on this map
Where omitted, land lines have not been established



CONTOUR INTERVAL 40 FEET
SUPPLEMENTARY CONTOUR INTERVAL 20 FEET
NATIONAL GEODETIC VERTICAL DATUM OF 1929

THIS MAP COMPLIES WITH NATIONAL MAP ACCURACY STANDARDS
FOR SALE BY U.S. GEOLOGICAL SURVEY
DENVER, COLORADO 80225, OR RESTON, VIRGINIA 22092
A FOLDER DESCRIBING TOPOGRAPHIC MAPS AND SYMBOLS IS AVAILABLE ON REQUEST



QUADRANGLE LOCATION

1	2	3
4	5	6
7	8	9

1 Granite Peak SE
2 Dugway Proving Ground SW
3 Dugway Proving Ground SE
4 Fish Springs NE
5 Dugway Range NE
6 Fish Springs SE
7 Dugway Range SW
8 Dugway Pass

Primary highway
hard surface
Secondary highway
hard surface
Unimproved road
Light-duty road, hard or
improved surface
Interstate Route U.S. Route State Route

DUGWAY RANGE NW, UT
39113-H2-TF-024
1993

DMA 3363 1 NW-SERIES VB97

