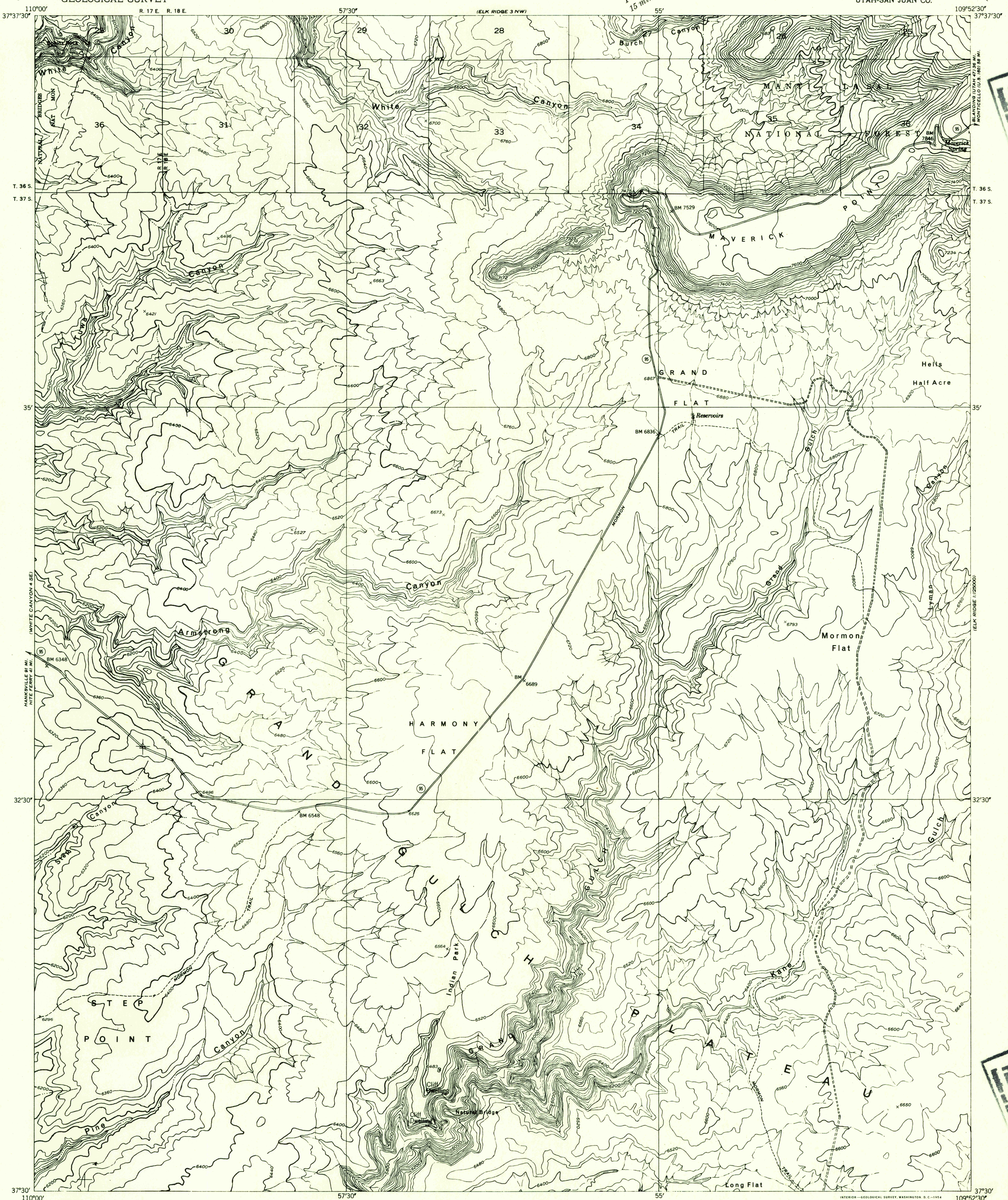


DEPARTMENT OF THE INTERIOR
GEOLOGICAL SURVEY

Preliminary edition
Pending completion of 1:62,500 scale
15 minute maps covering this area

ELK RIDGE 3 SW QUADRANGLE
UTAH-SAN JUAN CO.



Mapped by the Geological Survey 1952
Topography by multiplex methods from
aerial photographs taken 1951

TRUE NORTH
MAGNETIC NORTH
APPROXIMATE MEAN
DECLINATION, 1952

SCALE 1:24000
1 0 1000 2000 3000 4000 5000 6000 7000 FEET
1 MILE

CONTOUR INTERVAL 40 FEET
DATUM IS MEAN SEA LEVEL

USGS
HISTORICAL FILE
TOPOGRAPHIC DIVISION

ROAD CLASSIFICATION
Improved ——— Unimproved - - - - -

ELK RIDGE 3 SW, UTAH
N3730-W10952.5/7.5

JUN 22 1954