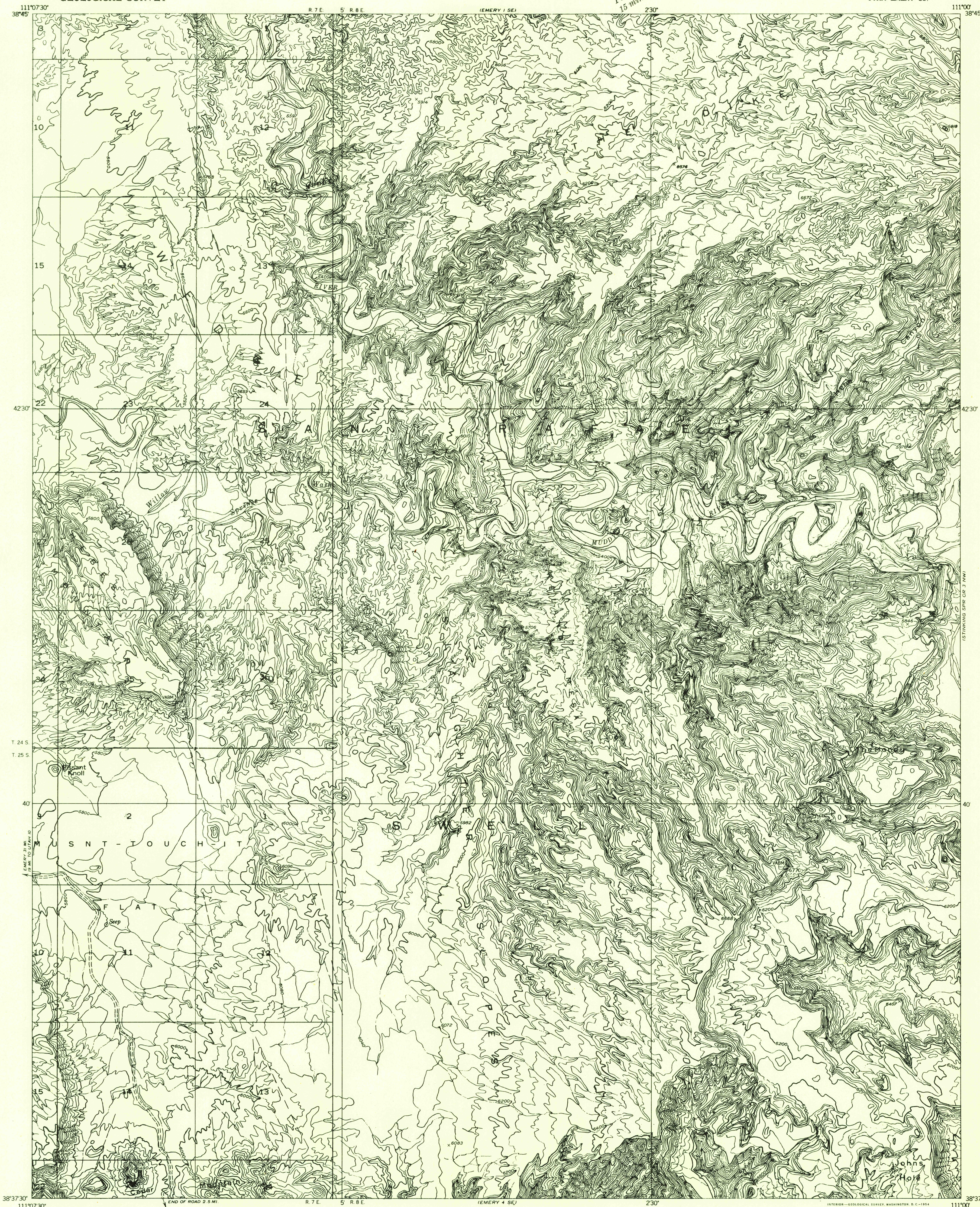


DEPARTMENT OF THE INTERIOR
GEOLOGICAL SURVEY

Preliminary edition
Pending completion of 1:62,500 scale
15 minute maps covering this area

EMERY 4 NE QUADRANGLE
UTAH-EMERY CO.

STINKING SPR CR 2 SW



Map by the Geological Survey 1953
Topography by multiplex methods from
aerial photographs taken 1951

TRUE NORTH
MAGNETIC NORTH
APPROXIMATE MEAN
DECLINATION, 1953

SCALE 1:24000
1 0 1000 2000 3000 4000 5000 6000 7000 FEET
1 MILE

CONTOUR INTERVAL 40 FEET
DATUM IS MEAN SEA LEVEL

USGS
HISTORICAL FILE
TOPOGRAPHIC DIVISION

ROAD CLASSIFICATION
Improved ——— Unimproved - - - - -

EMERY 4 NE, UTAH
N3837.5-W11100/7.5

STINKING SPR CR 3 NW

FILE COPY

FILE COPY

MAY 5 1954