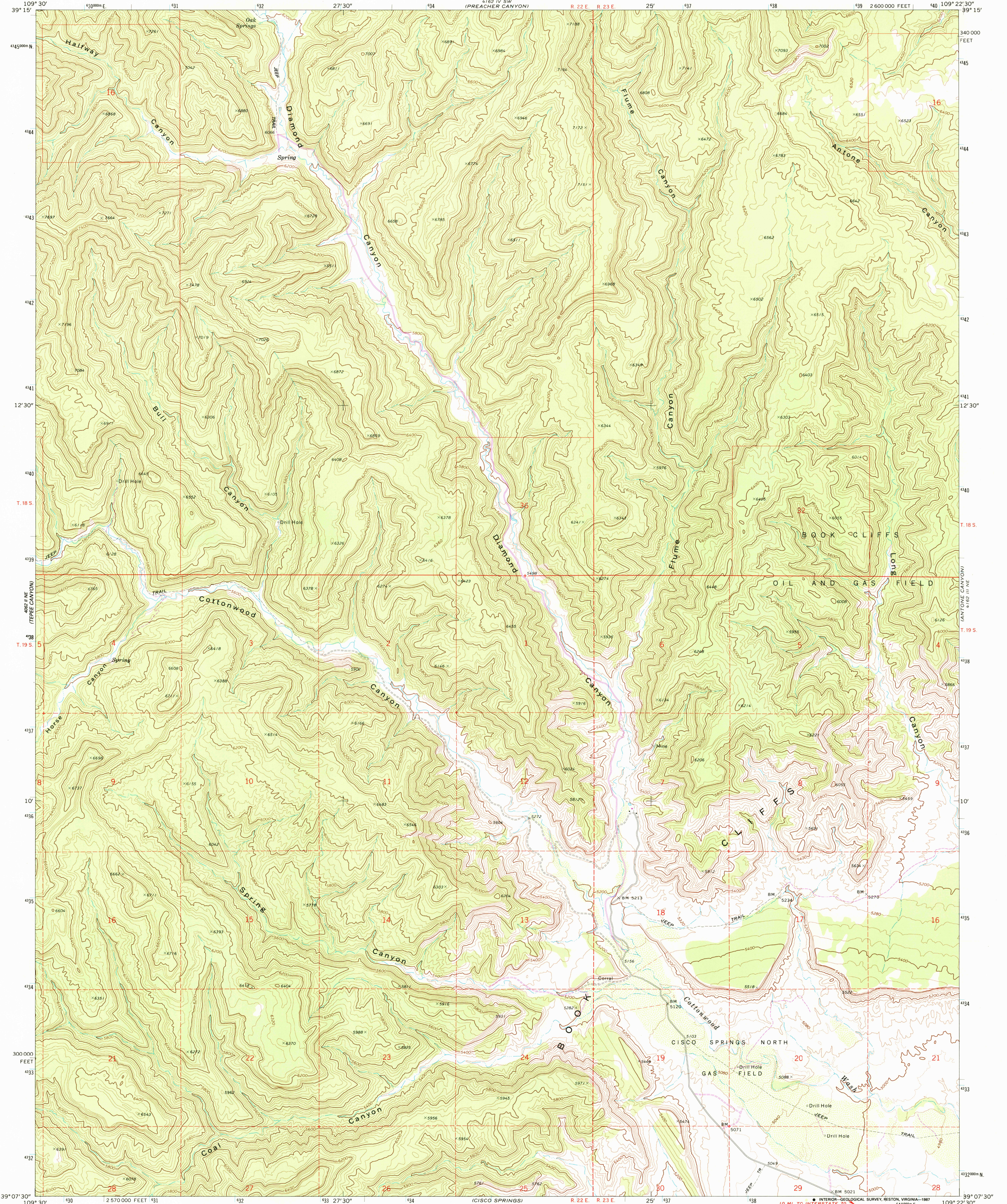


UNITED STATES  
DEPARTMENT OF THE INTERIOR  
GEOLOGICAL SURVEY

FLUME CANYON QUADRANGLE  
UTAH—GRAND CO.  
7.5 MINUTE SERIES (TOPOGRAPHIC)



Mapped, edited, and published by the Geological Survey

Control by USGS and USC&GS

Topography by photogrammetric methods from aerial photographs taken 1969. Field checked 1970

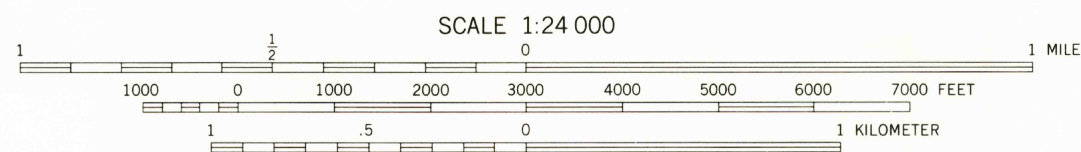
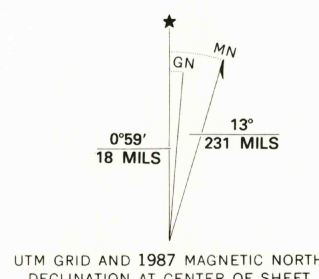
Polyconic projection. 1927 North American datum 10,000-foot grid based on Utah coordinate system, central zone 1000-meter Universal Transverse Mercator grid ticks, zone 12, shown in blue

Fine red dashed lines indicate selected fence lines

Where omitted, land lines have not been established

To place on the predicted North American Datum 1983, move the projection lines 6 meters north and 59 meters east as shown by dashed corner ticks

Revisions shown in purple compiled from aerial photographs taken 1983 and other sources. This information not field checked. Map edited 1987



CONTOUR INTERVAL 40 FEET  
DOTTED LINES REPRESENT 20-FOOT CONTOURS  
NATIONAL GEODETIC VERTICAL DATUM OF 1929

THIS MAP COMPLIES WITH NATIONAL MAP ACCURACY STANDARDS  
FOR SALE BY U. S. GEOLOGICAL SURVEY, DENVER, COLORADO 80225, OR RESTON, VIRGINIA 22092  
A FOLDER DESCRIBING TOPOGRAPHIC MAPS AND SYMBOLS IS AVAILABLE ON REQUEST

ROAD CLASSIFICATION	
Primary highway, hard surface	Light-duty road, hard or improved surface
Secondary highway, hard surface	Unimproved road
Interstate Route	U. S. Route
	State Route



QUADRANGLE LOCATION

U.S. GEOLOGICAL SURVEY  
SEP 13 1988  
REGD FILE COPY

FLUME CANYON, UTAH  
39109-B4-TF-024

1970  
PHOTOREVISED 1987  
DMA 4162 III NW-SERIES V897