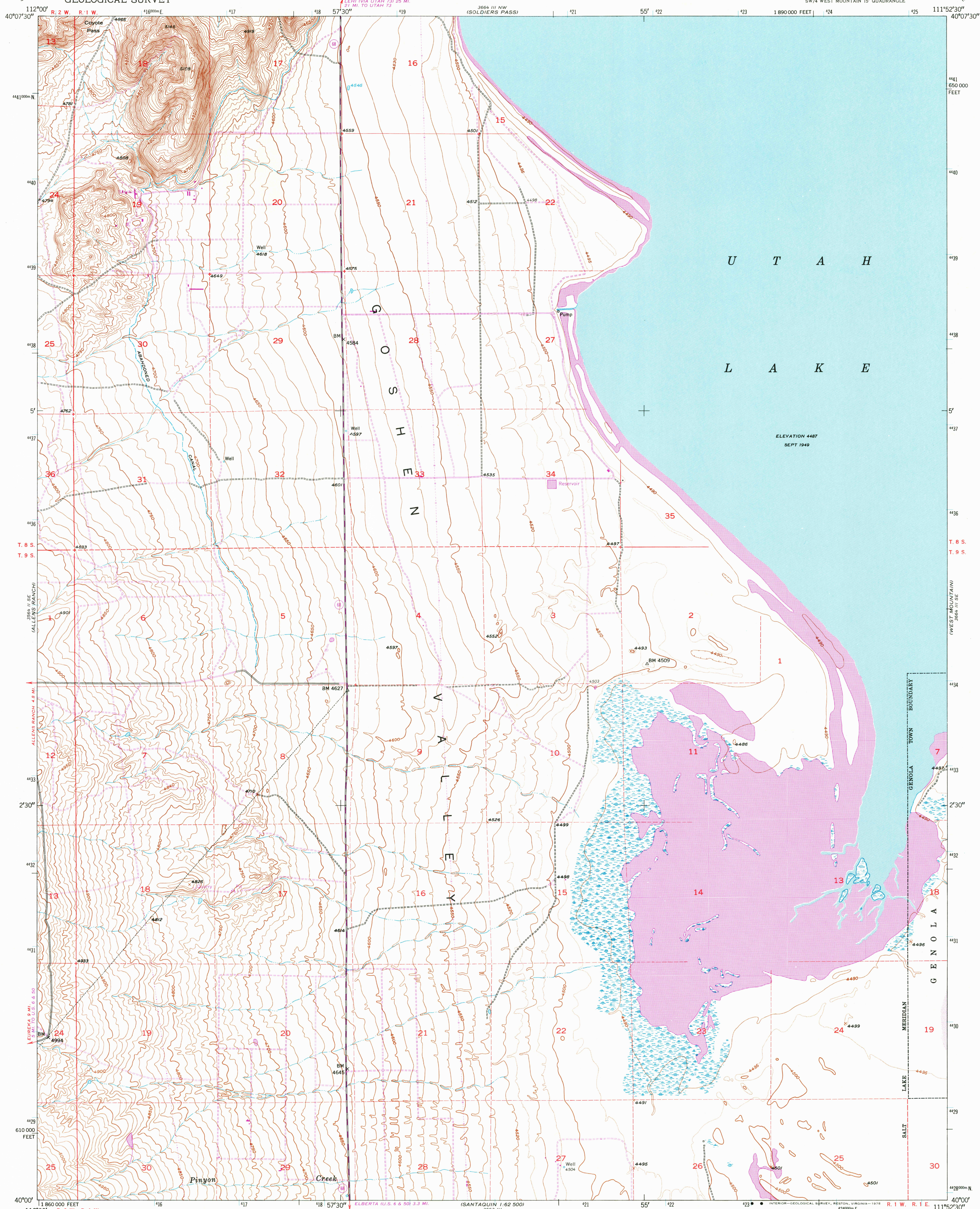


UNITED STATES
DEPARTMENT OF THE INTERIOR
GEOLOGICAL SURVEY

GOSHEN VALLEY NORTH QUADRANGLE
UTAH—UTAH CO.
7.5 MINUTE SERIES (TOPOGRAPHIC)
SW 1/4 WEST MOUNTAIN 15' QUADRANGLE



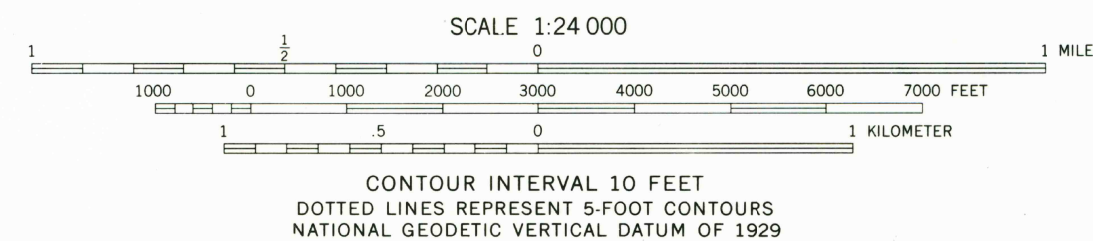
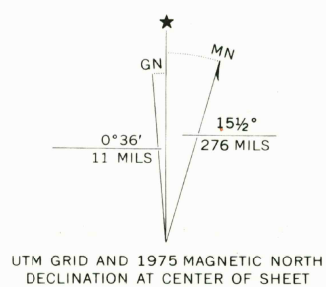
Mapped, edited, and published by the Geological Survey

Control by USGS, NOS/NOAA, and USBR

Topography from aerial photographs by multiplex methods
and by plane-table surveys 1950
Aerial photographs taken 1947

Polyconic projection. 1927 North American datum
10,000-foot grid based on Utah coordinate system,
central zone
1000-meter Universal Transverse Mercator grid ticks,
zone 12, shown in blue

Revisions shown in purple compiled from aerial photographs
taken 1969 and 1975. This information not field checked



THIS MAP COMPLIES WITH NATIONAL MAP ACCURACY STANDARDS
FOR SALE BY U.S. GEOLOGICAL SURVEY, DENVER, COLORADO 80225, OR RESTON, VIRGINIA 22092
A FOLDER DESCRIBING TOPOGRAPHIC MAPS AND SYMBOLS IS AVAILABLE ON REQUEST

ROAD CLASSIFICATION
Heavy-duty ———
Medium-duty ———
Light-duty ———
Unimproved dirt ———
State Route ———



GOSHEN VALLEY NORTH, UTAH
SW 1/4 WEST MOUNTAIN 15' QUADRANGLE
N4000—W11152.5/7.5

USGS
Historical File
Topographic Division
1950
PHOTOREVISED 1969 AND 1975
AMS 3664 III SW—SERIES V897

AUG 22 1978

2595