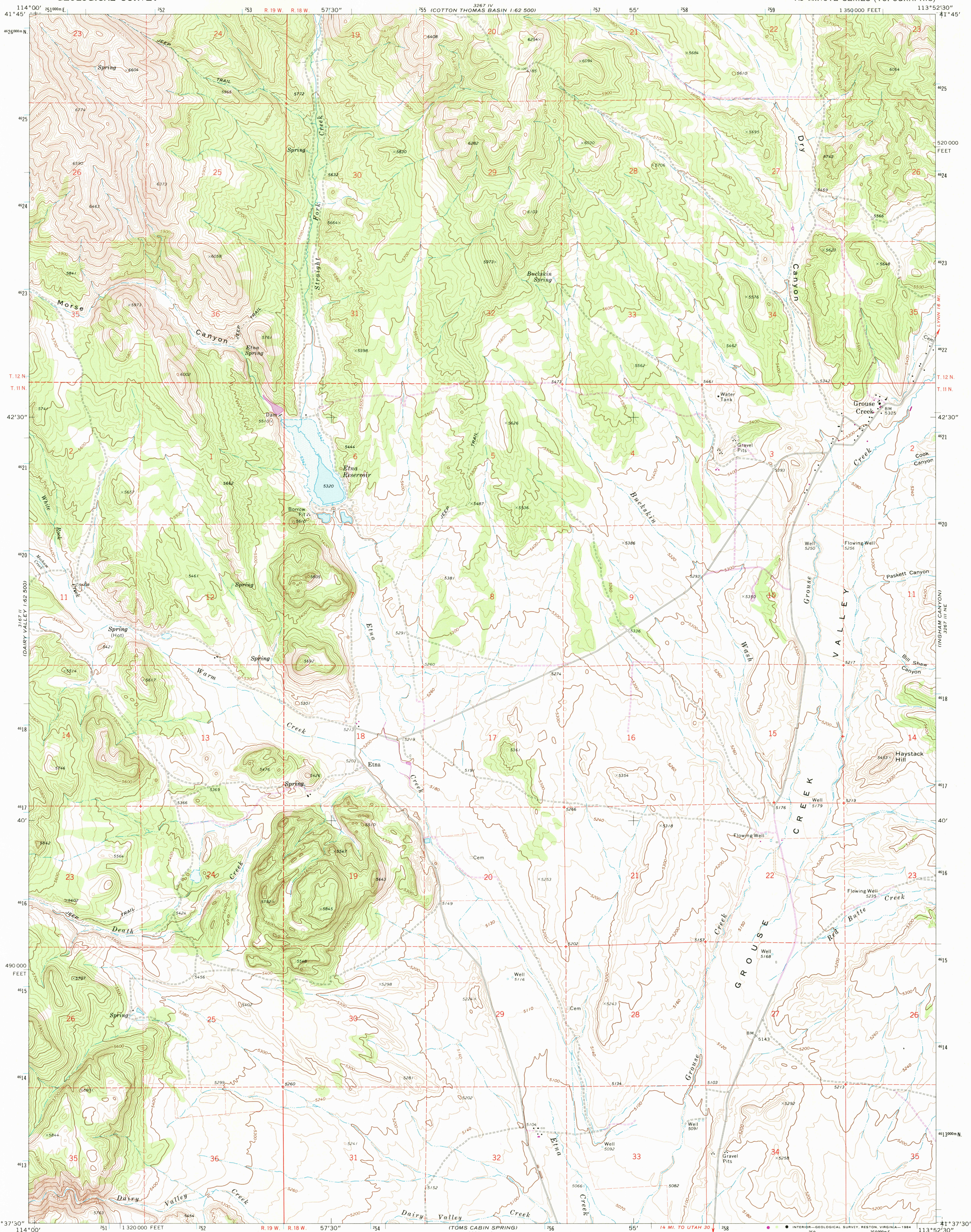


UNITED STATES
DEPARTMENT OF THE INTERIOR
GEOLOGICAL SURVEY

GROUSE CREEK QUADRANGLE
UTAH—BOX ELDER CO.
7.5 MINUTE SERIES (TOPOGRAPHIC)

3267 IV
80225
1982



Mapped, edited, and published by the Geological Survey

Control by USGS and NOS/NOAA

Topography by photogrammetric methods from aerial photographs taken 1968. Field checked 1971.

Projection and 10,000-foot grid ticks: Utah coordinate system, north zone (Lambert conformal conic)

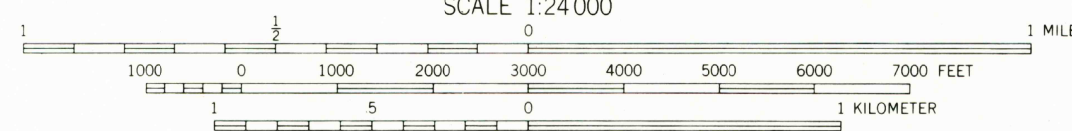
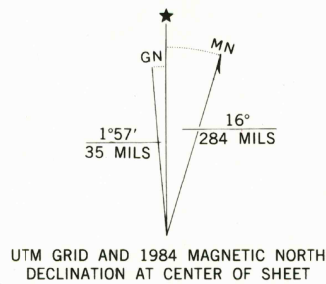
1000-meter Universal Transverse Mercator grid ticks, zone 12, shown in blue

1927 North American Datum

To place on the predicted North American Datum 1983 move the projection lines 12 meters north and 71 meters east as shown by dashed corner ticks

Fine red dashed lines indicate selected fence lines

Areas covered by dashed light-blue pattern are subject to controlled inundation



CONTOUR INTERVAL 20 FEET
DOTTED LINES REPRESENT 10-FOOT CONTOURS
NATIONAL GEODETIC VERTICAL DATUM OF 1929

THIS MAP COMPLIES WITH NATIONAL MAP ACCURACY STANDARDS
FOR SALE BY U. S. GEOLOGICAL SURVEY, DENVER, COLORADO 80225, OR RESTON, VIRGINIA 22092
A FOLDER DESCRIBING TOPOGRAPHIC MAPS AND SYMBOLS IS AVAILABLE ON REQUEST

Revisions shown in purple and woodland compiled from aerial photographs taken 1982 and other sources
This information not field checked. Map edited 1984

ROAD CLASSIFICATION
Primary highway, hard surface
Secondary highway, hard surface
Unimproved road
Interstate Route
U. S. Route
State Route



GROUSE CREEK, UTAH
41113-F8-TF-024

1971
PHOTOREVISED 1984
DMA 3267 III NW—SERIES V897