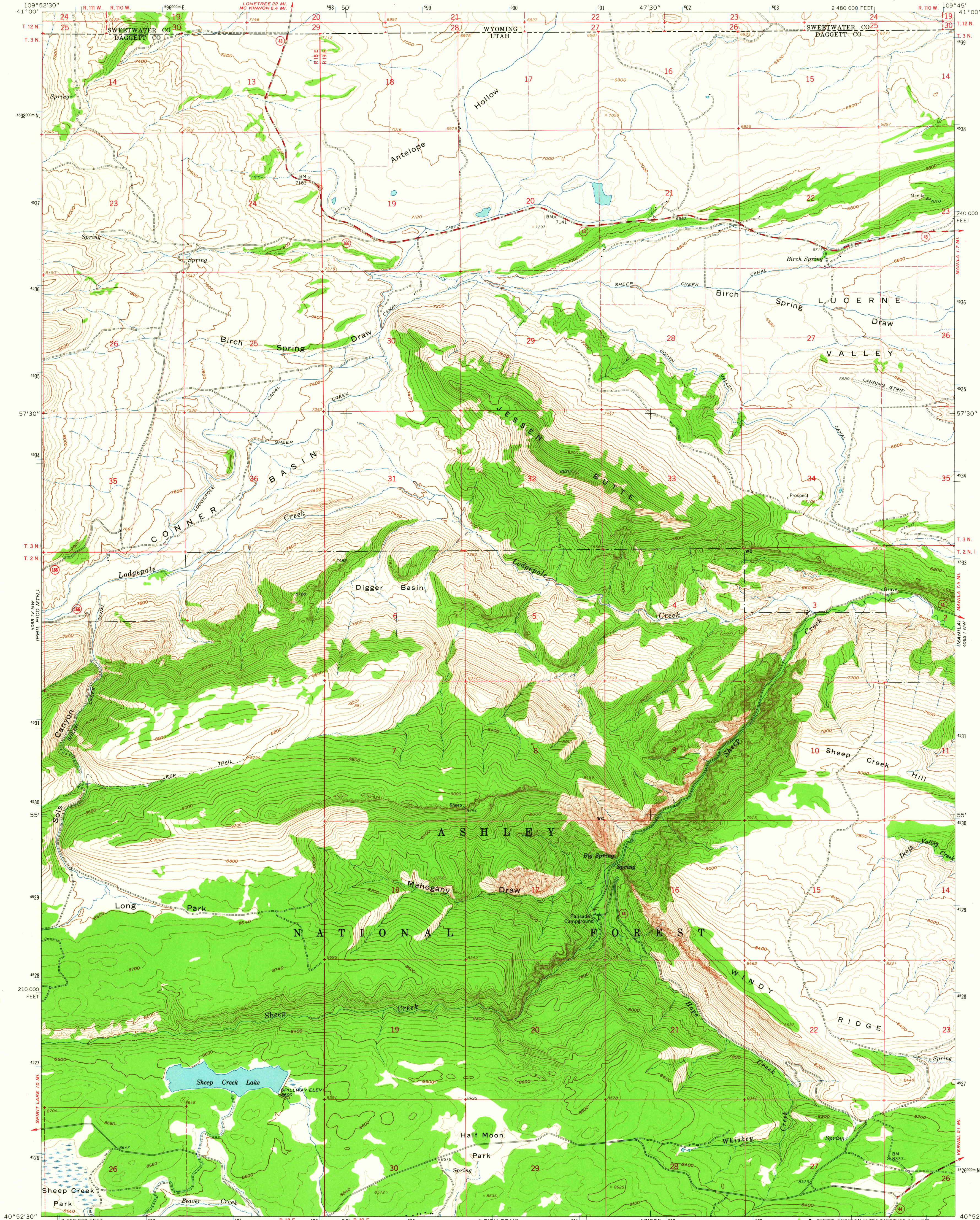
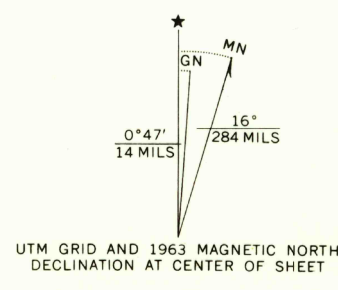


UNITED STATES
DEPARTMENT OF THE INTERIOR
GEOLOGICAL SURVEY

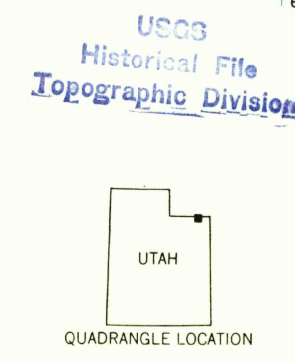
JESSEN BUTTE QUADRANGLE
UTAH-WYOMING
7.5 MINUTE SERIES (TOPOGRAPHIC)



Mapped, edited, and published by the Geological Survey
Control by USGS and USC&GS
Topography by photogrammetric methods from aerial
photographs taken 1959. Field checked 1963
Polyconic projection. 1927 North American datum
10,000-foot grid based on Utah coordinate system, north zone
1000-meter Universal Transverse Mercator grid ticks,
zone 12, shown in blue
Where omitted, land lines have not been established
Fine red dashed lines indicate selected fence lines



SCALE 1:24,000
CONTOUR INTERVAL 40 FEET
DOTTED LINES REPRESENT 20-FOOT CONTOURS
DATUM IS MEAN SEA LEVEL
THIS MAP COMPLIES WITH NATIONAL MAP ACCURACY STANDARDS
FOR SALE BY U. S. GEOLOGICAL SURVEY, DENVER 25, COLORADO OR WASHINGTON 25, D. C.
A FOLDER DESCRIBING TOPOGRAPHIC MAPS AND SYMBOLS IS AVAILABLE ON REQUEST



ROAD CLASSIFICATION
Medium-duty ——— Light-duty ———
Unimproved dirt ———
State Route

JESSEN BUTTE, UTAH-WYO.
N4052.5-W10945.7.5

USGS
COPY
TOPOGRAPHIC DIVISION
MAR 10 1965
2675