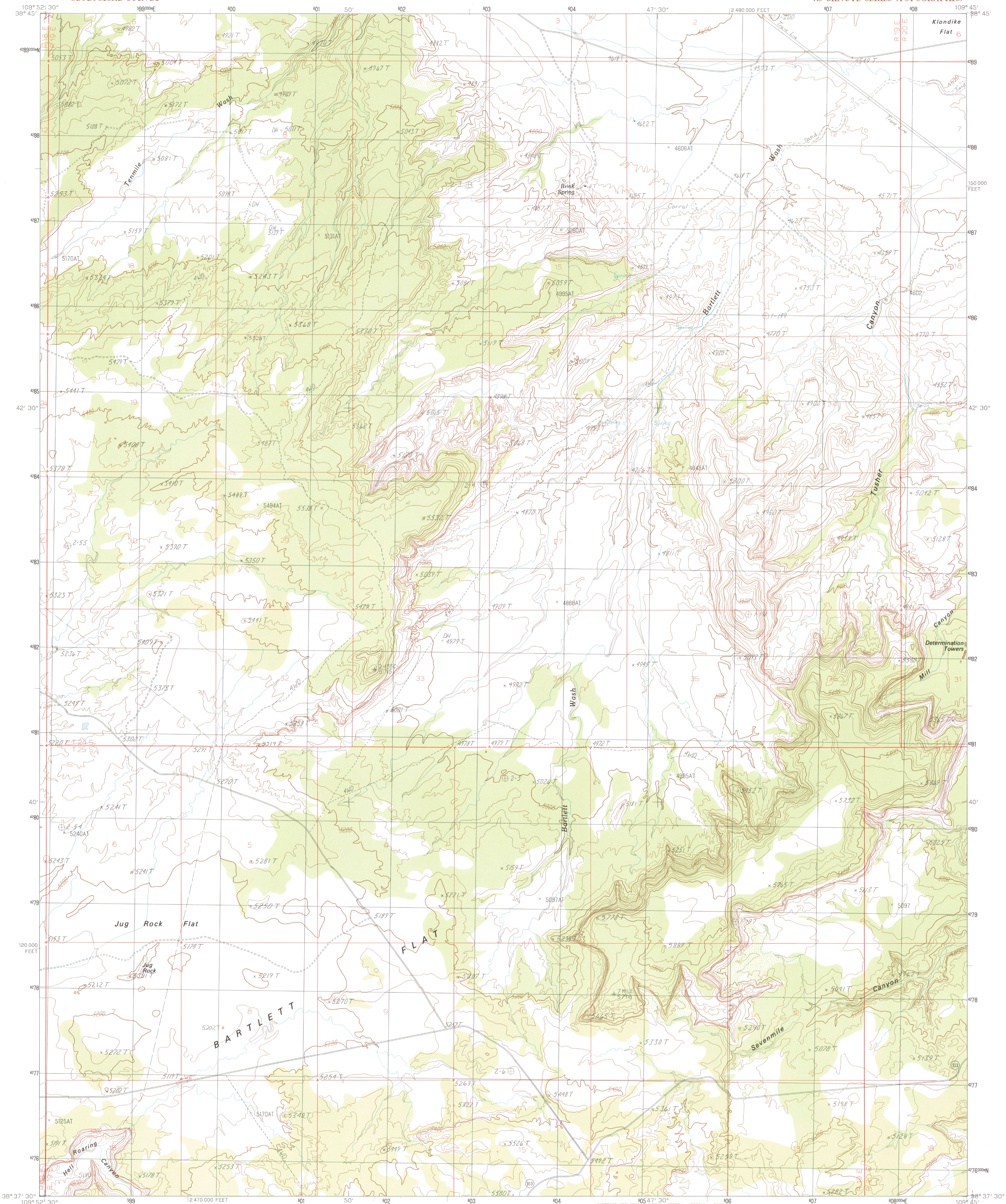


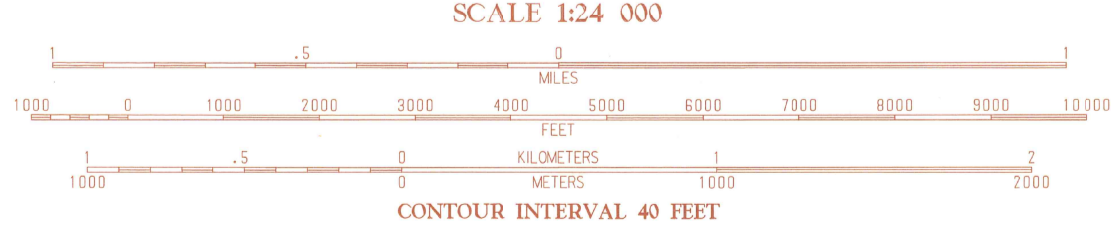
UNITED STATES  
DEPARTMENT OF THE INTERIOR  
GEOLOGICAL SURVEY

JUG ROCK QUADRANGLE  
UTAH-GRAND CO.  
7.5 MINUTE SERIES (TOPOGRAPHIC)



PRODUCED BY THE UNITED STATES GEOLOGICAL SURVEY  
CONTROL BY ..... USGS, NOS/NOAA  
COMPILED FROM AERIAL PHOTOGRAPHS TAKEN ..... 1981  
FIELD CHECKED ..... 1983 MAP EDITED ..... 1988  
PROJECTION ..... LAMBERT CONFORMAL CONIC  
GRID: 1000-METER UNIVERSAL TRANSVERSE MERCATOR ..... ZONE 12  
1000-FOOT STATE GRID TICKS ..... UTAH, CENTRAL ZONE  
UTM GRID DECLINATION ..... 0°49' EAST  
1983 MAGNETIC NORTH DECLINATION ..... 1°15' EAST  
VERTICAL DATUM ..... NATIONAL GEODETIC VERTICAL DATUM OF 1929  
HORIZONTAL DATUM ..... 1927 NORTH AMERICAN DATUM  
To place on the predicted North American Datum of 1983,  
move the projection lines as shown by dashed corner ticks  
(6 meters north and 60 meters east).  
There may be private inholdings within the boundaries of any  
Federal and State Reservations shown on this map  
Where omitted, land lines have not been established

PROVISIONAL MAP  
Produced from original  
manuscript drawings. Infor-  
mation shown as of date of  
photography. 1



To convert feet to meters multiply by .3048  
To convert meters to feet multiply by 3.2808

THIS MAP COMPLIES WITH NATIONAL MAP ACCURACY STANDARDS  
FOR SALE BY U.S. GEOLOGICAL SURVEY, DENVER, COLORADO 80225  
OR RESTON, VIRGINIA 22092

| QUADRANGLE LOCATION |   |   |   |   |   |   |   |
|---------------------|---|---|---|---|---|---|---|
| 1                   | 2 | 3 | 4 | 5 | 6 | 7 | 8 |
| 1                   | 2 | 3 | 4 | 5 | 6 | 7 | 8 |
| 1                   | 2 | 3 | 4 | 5 | 6 | 7 | 8 |
| 1                   | 2 | 3 | 4 | 5 | 6 | 7 | 8 |
| 1                   | 2 | 3 | 4 | 5 | 6 | 7 | 8 |
| 1                   | 2 | 3 | 4 | 5 | 6 | 7 | 8 |
| 1                   | 2 | 3 | 4 | 5 | 6 | 7 | 8 |

ADJOINING 7.5' QUADRANGLE NAMES

ROAD LEGEND  
Improved Road .....  
Unimproved Road .....  
Trail .....  
Interstate Route ..... U.S. Route ..... State Route

JUG ROCK, UTAH  
PROVISIONAL EDITION 1988

38109-F7-TF-024

USGS MMD HISTORICAL MAP  
MAR 23 1989  
REC'D FILE COPY