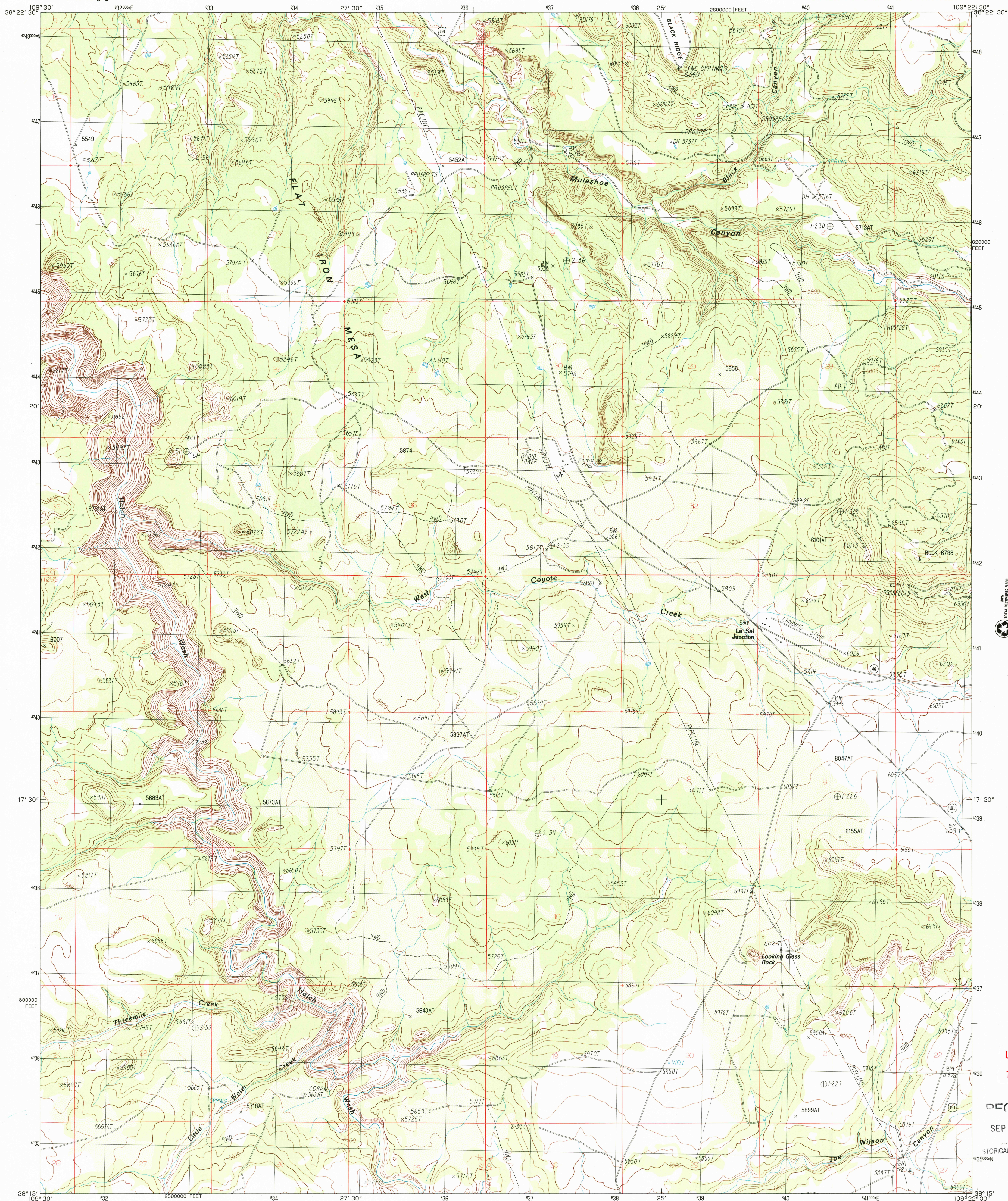




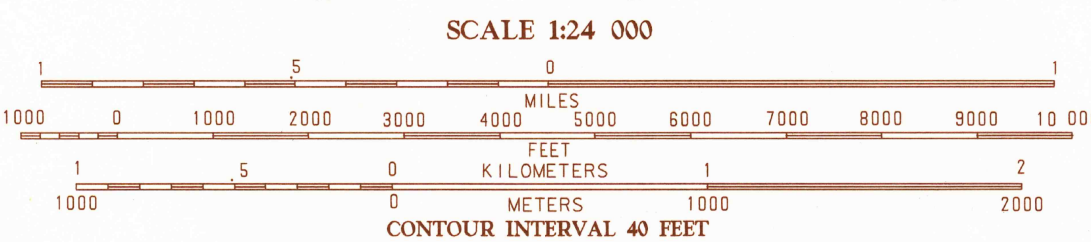
U.S. DEPARTMENT OF THE INTERIOR
U.S. GEOLOGICAL SURVEY

LA SAL JUNCTION QUADRANGLE
UTAH-SAN JUAN CO.
7.5 MINUTE SERIES (TOPOGRAPHIC)



PRODUCED BY THE UNITED STATES GEOLOGICAL SURVEY
CONTROL BY: USGS, NOS/NOAA
COMPILED FROM AERIAL PHOTOGRAPHS TAKEN: 1981
FIELD CHECKED: 1980 MAP EDITED: 1987
PROJECTION: LAMBERT CONFORMAL CONIC
GRID: 1000-METER UNIVERSAL TRANSVERSE MERCATOR ZONE 12
6000-FOOT STATE GRID TICKS: UTAH SOUTH ZONE
UTM GRID DECLINATION: 0°58' EAST
1987 MAGNETIC NORTH DECLINATION: 13° EAST
VERTICAL DATUM: NATIONAL GEODETIC VERTICAL DATUM OF 1929
HORIZONTAL DATUM: 1927 NORTH AMERICAN DATUM
To place on the predicted North American Datum of 1983,
move the projection lines as shown by dashed corner ticks
(5 meters north and 59 meters east)
There may be private inholdings within the boundaries of any
Federal and State Reservations shown on this map
All marginal data and lettering generated and positioned by
automated type placement procedures

PROVISIONAL MAP
Produced from original
manuscript drawings. Informa-
tion shown as of date of
field check. 2



THIS MAP COMPLIES WITH NATIONAL MAP ACCURACY STANDARDS
FOR SALE BY U.S. GEOLOGICAL SURVEY, DENVER, COLORADO 80225



1	2	3
1	2	3
4	5	6
7	8	9

ADJOINING 7.5 QUADRANGLE NAMES

ROAD LEGEND
Improved Road
Unimproved Road
Trail
Interstate Route U.S. Route State Route

LA SAL JUNCTION, UTAH
PROVISIONAL EDITION 1987

38109-C4-TF-024



USGS Library
Reston, VA.
Topo Archive

RECEIVED
SEP 26 2003

STORICAL MAP ARCHIVES

