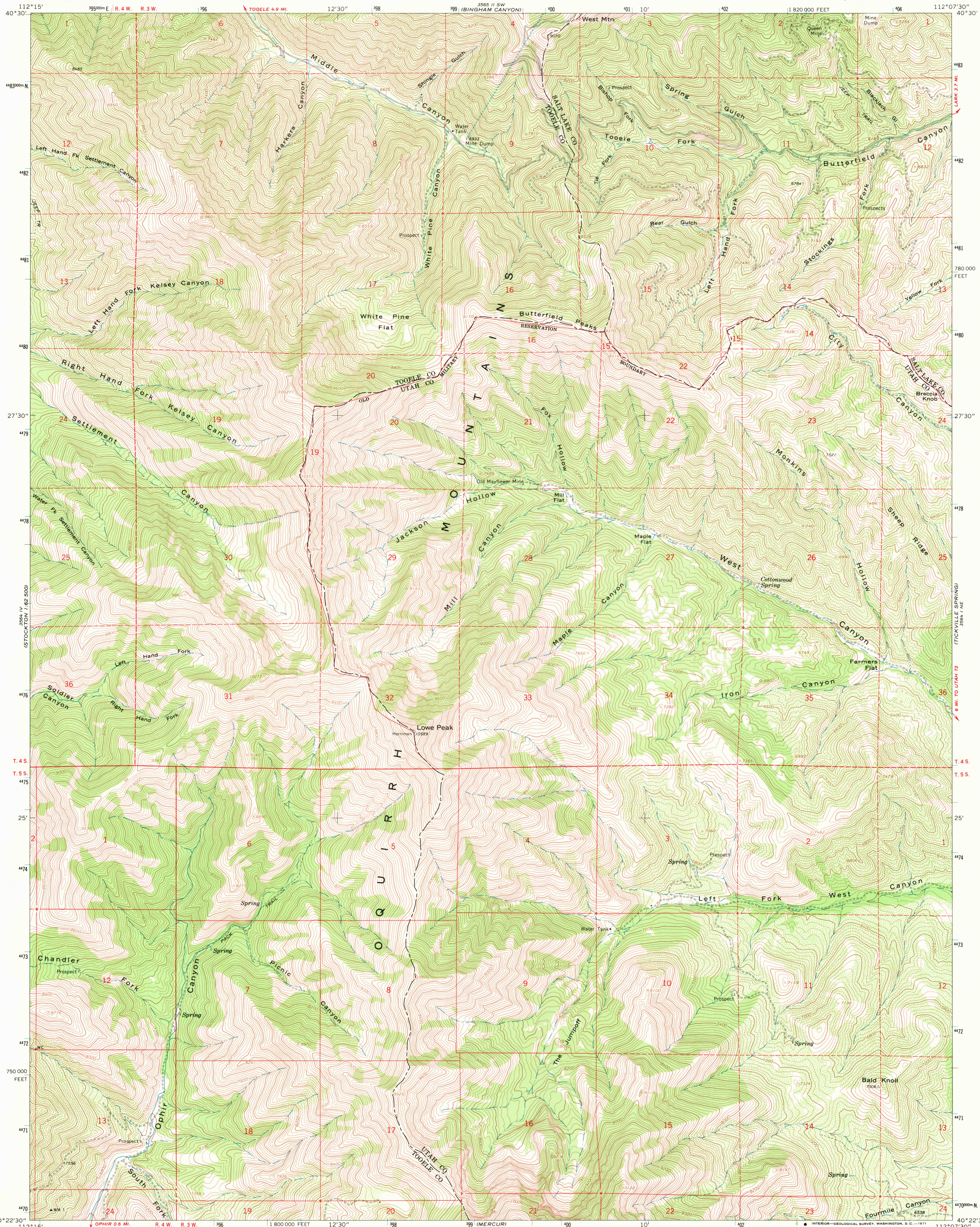
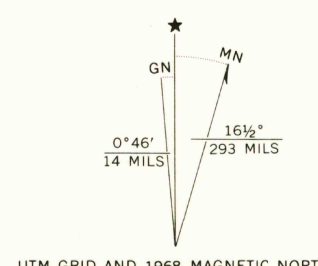


UNITED STATES  
DEPARTMENT OF THE INTERIOR  
GEOLOGICAL SURVEY

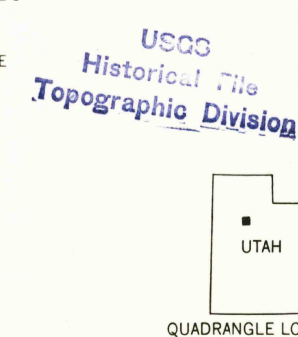
LOWE PEAK QUADRANGLE  
UTAH  
7.5 MINUTE SERIES (TOPOGRAPHIC)  
NW/4 FAIRFIELD 15' QUADRANGLE



Mapped, edited, and published by the Geological Survey  
Control by USGS and USC&GS  
Topography by photogrammetric methods from aerial  
photographs taken 1966. Field checked 1968  
Polyconic projection. 1927 North American datum  
10,000-foot grid based on Utah coordinate system, central zone  
1000-meter Universal Transverse Mercator grid ticks,  
zone 12, shown in blue



SCALE 1:24,000  
CONTOUR INTERVAL 40 FEET  
DATUM IS MEAN SEA LEVEL



ROAD CLASSIFICATION  
Light-duty road, all weather, Unimproved road, fair or dry weather, improved surface

LOWE PEAK, UTAH  
NW/4 FAIRFIELD 15' QUADRANGLE  
N4022.5—W11207.5/7.5

1968

AMS 3564 I NW—SERIES V897

THIS MAP COMPLIES WITH NATIONAL MAP ACCURACY STANDARDS  
FOR SALE BY U.S. GEOLOGICAL SURVEY, DENVER, COLORADO 80225, OR WASHINGTON, D.C. 20242  
A FOLDER DESCRIBING TOPOGRAPHIC MAPS AND SYMBOLS IS AVAILABLE ON REQUEST

U.S.G.S.  
5000' COPY  
TOPOGRAPHIC DIVISION

JUL 27 1971