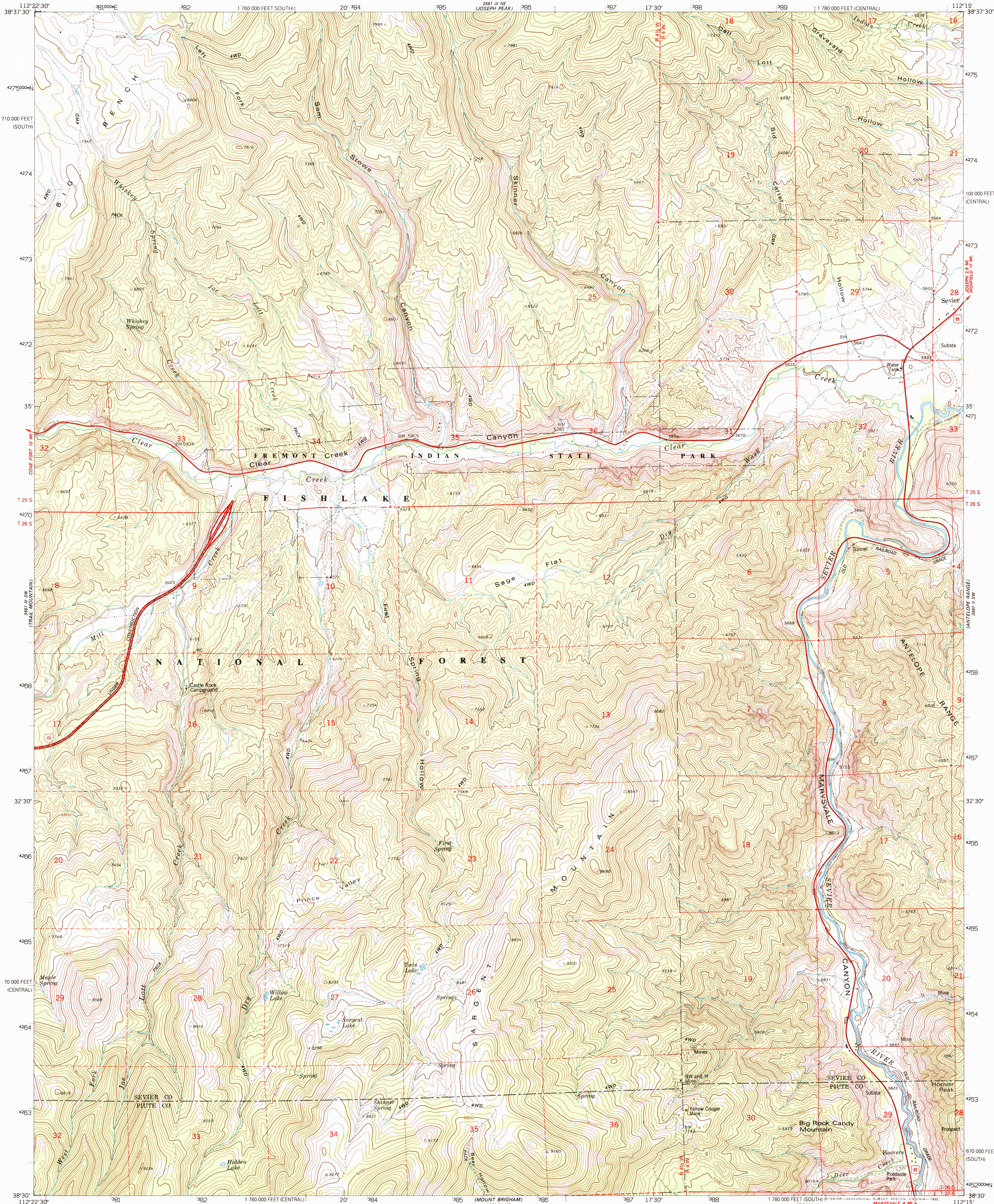
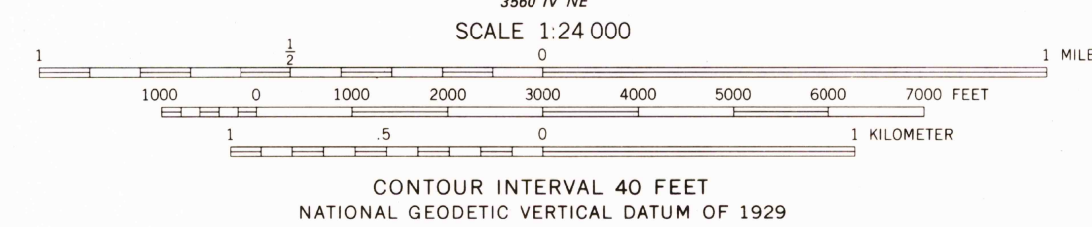
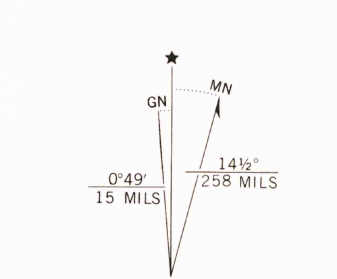


UNITED STATES  
DEPARTMENT OF THE INTERIOR  
GEOLOGICAL SURVEY

MARYSVALE CANYON QUADRANGLE  
UTAH  
7.5 MINUTE SERIES (TOPOGRAPHIC)



Produced by the United States Geological Survey  
Control by USGS and NGS/NOAA  
Compiled from aerial photographs taken 1973. Field checked 1975  
Map edited 1981  
North American Datum of 1927 (NAD 27). Projection:  
Utah Coordinate System, central zone (Lambert Conformal Conic)  
10000-foot ticks: Utah Coordinate System central and south zones  
Blue 1000-meter Universal Transverse Mercator ticks, zone 12  
North American Datum of 1983 (NAD 83) is shown by dashed  
corner ticks. The values of the shift between NAD 27 and NAD 83  
for 7.5-minute intersections are obtainable from National Geodetic  
Survey NADCON software  
There may be private inholdings within the boundaries of the  
National or State reservations shown on this map  
Certain land lines are omitted because of insufficient data



ROAD CLASSIFICATION

Primary highway, hard surface	Light-duty road, hard or improved surface
Secondary highway, hard surface	Unimproved road
Interstate Route	U. S. Route
	State Route

UTAH  
QUADRANGLE LOCATION

USGS AND HISTORICAL MAP ARCHIVES  
JUL 31 1995  
REC'D FILE COPY

MARYSVALE CANYON, UT  
3812-E3-TF-024  
1981  
DMA 3561 III SE-SERIES V897

THIS MAP COMPLIES WITH NATIONAL MAP ACCURACY STANDARDS  
FOR SALE BY U. S. GEOLOGICAL SURVEY, DENVER, COLORADO 80225, OR RESTON, VIRGINIA 22092  
A FOLDER DESCRIBING TOPOGRAPHIC MAPS AND SYMBOLS IS AVAILABLE ON REQUEST

