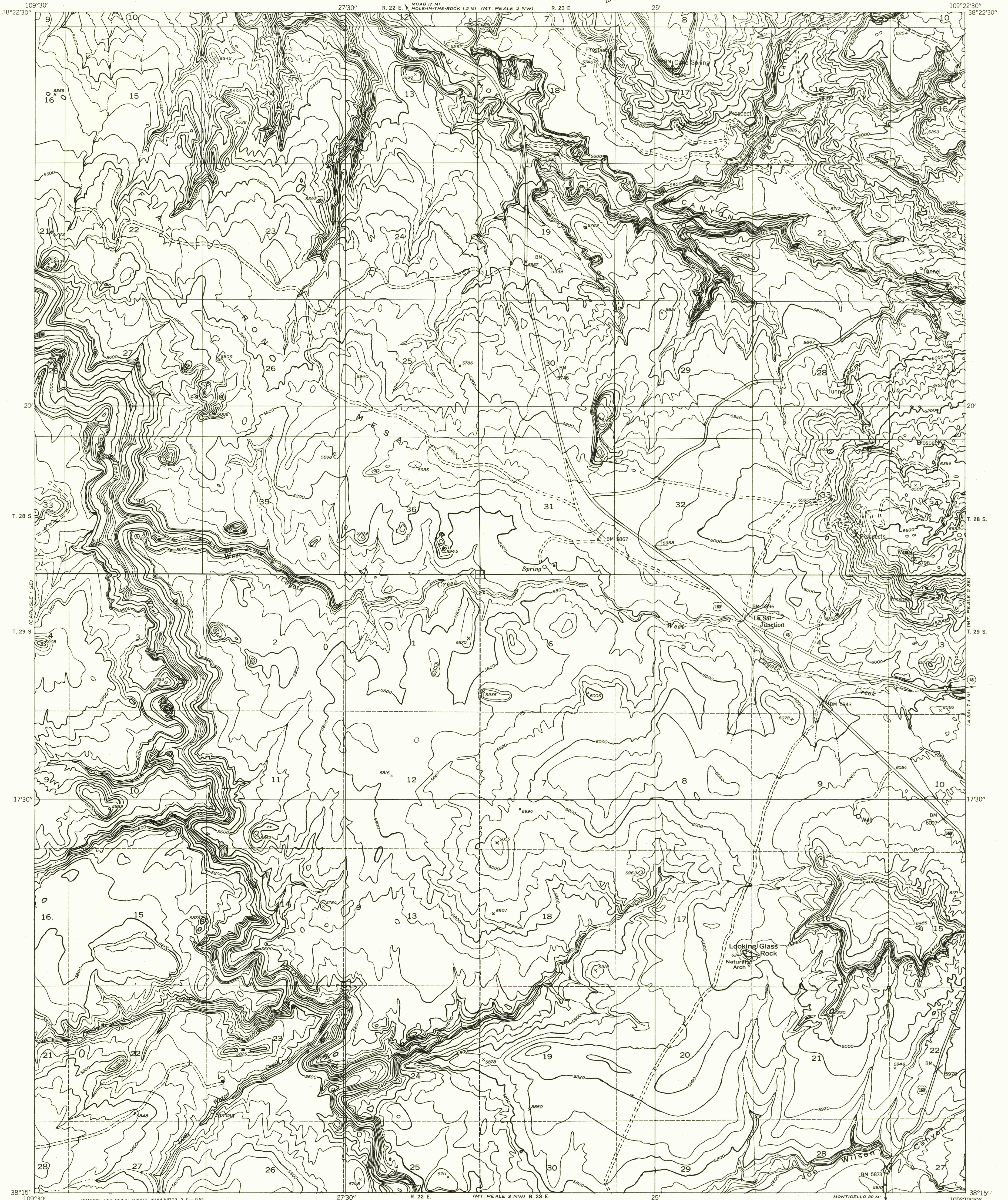


DEPARTMENT OF THE INTERIOR  
GEOLOGICAL SURVEY

Preliminary edition  
Pending completion of 1:62,500 scale  
15 minute maps covering this area

U.S.G.S.  
FILE COPY  
TOPOGRAPHIC DIVISION  
MT. PEALE 2 SW QUADRANGLE  
UTAH—SAN JUAN CO.



Map by the Geological Survey 1954  
Topography by multiplex methods from  
aerial photographs taken 1953  
Dashed land lines indicate approximate locations  
Symbols and other detail herein  
drawn for 1:62,500 scale publication

TRUE NORTH  
MAGNETIC NORTH  
APPROXIMATE MEAN  
DECLINATION, 1954

SCALE 1:24,000  
1 1/2 0 1000 2000 3000 4000 5000 6000 7000 FEET  
1 MILE

CONTOUR INTERVAL 40 FEET  
DATUM IS MEAN SEA LEVEL

ROAD CLASSIFICATION  
Improved ——— Unimproved - - - - -

U.S.G.S.  
FILE COPY  
TOPOGRAPHIC DIVISION

MT. PEALE 2 SW, UTAH  
N3815-W10922.5/7.5

NOV 4 1955  
2025