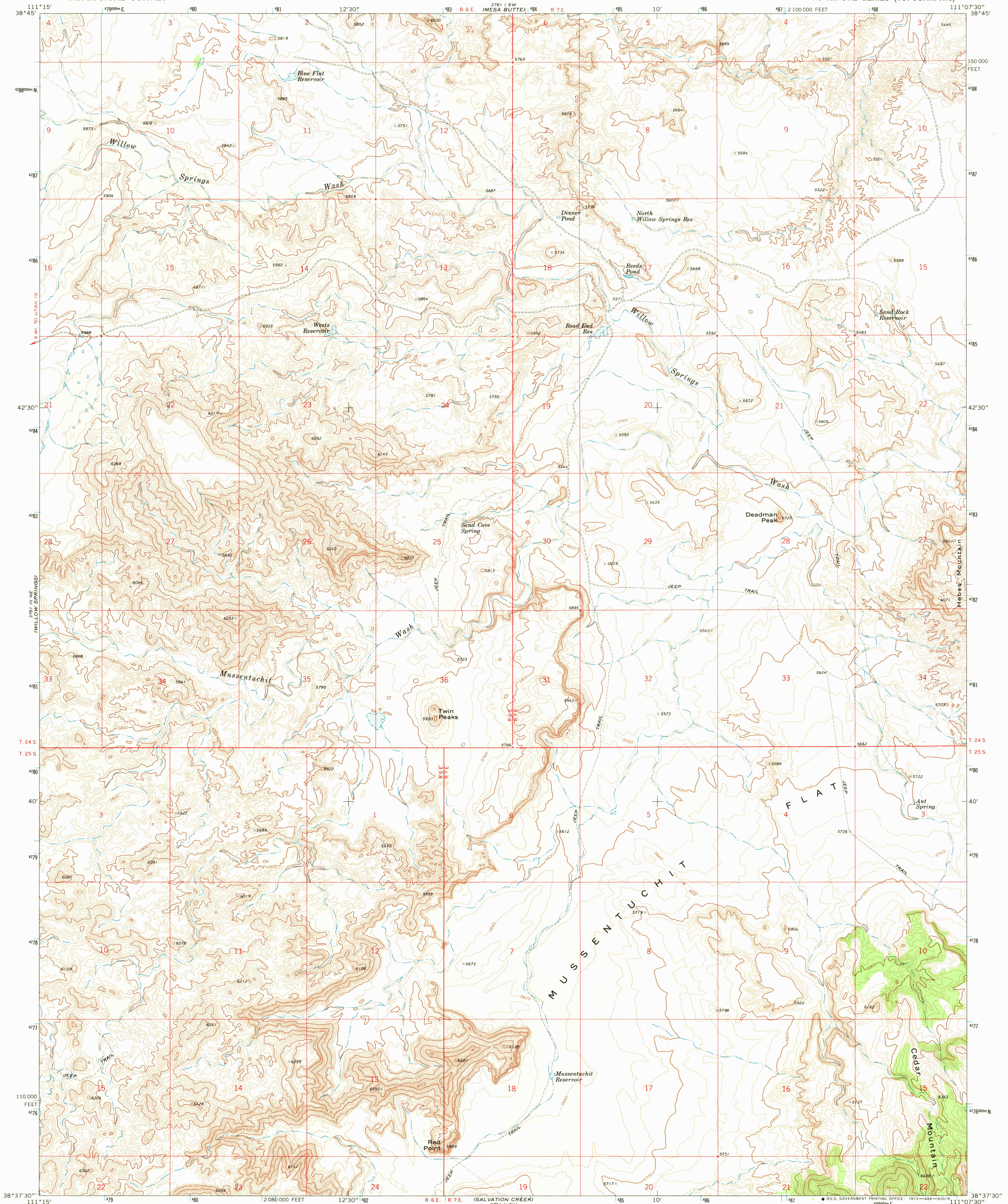


UNITED STATES
DEPARTMENT OF THE INTERIOR
GEOLOGICAL SURVEY

MUSSENTUCHIT FLAT QUADRANGLE
UTAH—EMERY CO.
7.5 MINUTE SERIES (TOPOGRAPHIC)



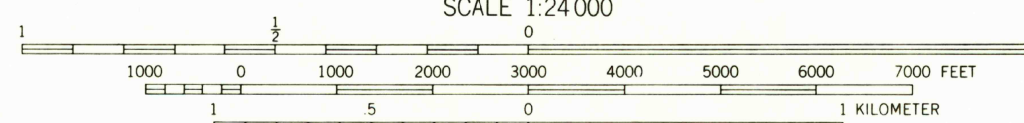
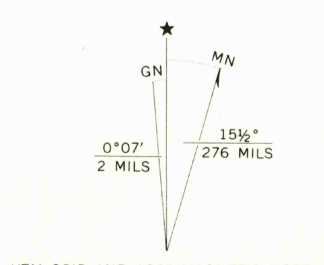
Mapped, edited, and published by the Geological Survey

Control by USGS and USC&GS

Topography by photogrammetric methods from aerial photographs taken 1966. Field checked 1968

Polyconic projection. 1927 North American datum 10,000-foot grid based on Utah coordinate system, central zone 1000-meter Universal Transverse Mercator grid ticks, zone 12, shown in blue

Fine red dashed lines indicate selected fence lines



CONTOUR INTERVAL 20 FEET
DATUM IS MEAN SEA LEVEL



ROAD CLASSIFICATION
Primary highway, light-duty road, hard or improved surface
Secondary highway, unimproved road
Interstate Route U.S. Route State Route

MUSSENTUCHIT FLAT, UTAH
N3837.5—W1107.5/7.5

1968

AMS 3761 II NW—SERIES V897

THIS MAP COMPLIES WITH NATIONAL MAP ACCURACY STANDARDS
FOR SALE BY U.S. GEOLOGICAL SURVEY, DENVER, COLORADO 80225, OR WASHINGTON, D. C. 20242
A FOLDER DESCRIBING TOPOGRAPHIC MAPS AND SYMBOLS IS AVAILABLE ON REQUEST

Hearty
2500
50 plane