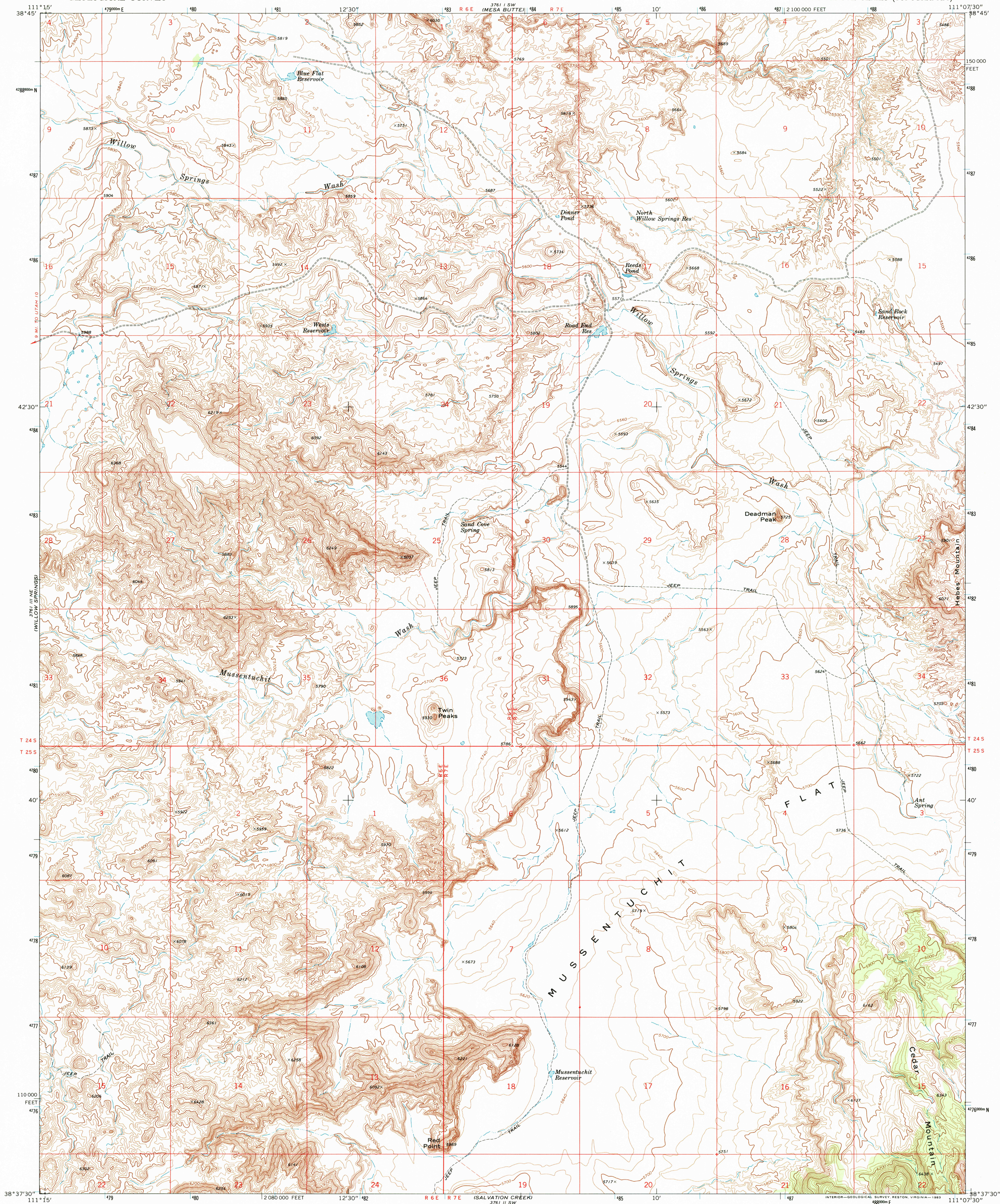


UNITED STATES  
DEPARTMENT OF THE INTERIOR  
GEOLOGICAL SURVEY

MUSSENTUCHIT FLAT QUADRANGLE  
UTAH-EMERY CO.  
7.5 MINUTE SERIES (TOPOGRAPHIC)



Mapped, edited, and published by the Geological Survey  
Control by USGS and USC&GS

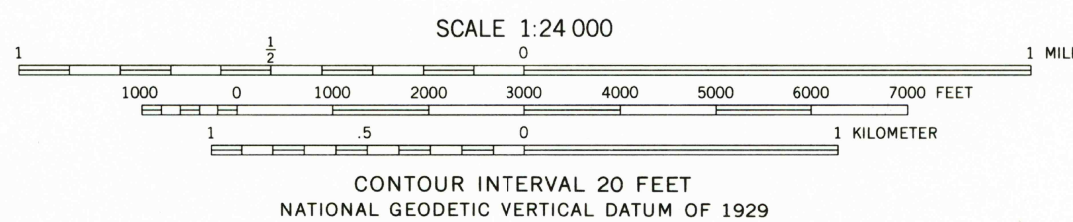
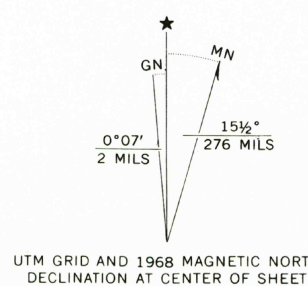
Topography by photogrammetric methods from aerial  
photographs taken 1966. Field checked 1968

Polyconic projection. 1927 North American datum  
10,000-foot grid based on Utah coordinate system, central zone  
1000-meter Universal Transverse Mercator grid ticks,  
zone 12, shown in blue

Fine red dashed lines indicate selected fence lines

To place on the predicted North American Datum 1983  
move the projection lines 7 meters north and  
64 meters east as shown by dashed corner ticks

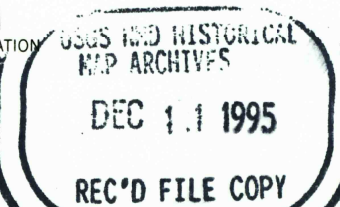
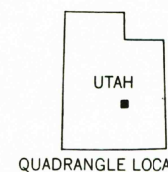
Map photoinspected 1976  
No major culture or drainage changes observed



THIS MAP COMPLIES WITH NATIONAL MAP ACCURACY STANDARDS  
FOR SALE BY U. S. GEOLOGICAL SURVEY, DENVER, COLORADO 80225, OR RESTON, VIRGINIA 22092  
A FOLDER DESCRIBING TOPOGRAPHIC MAPS AND SYMBOLS IS AVAILABLE ON REQUEST

ROAD CLASSIFICATION

- Primary highway, hard surface
- Secondary highway, hard surface
- Unimproved road
- Interstate Route
- U. S. Route
- State Route
- Light-duty road, hard or improved surface



MUSSENTUCHIT FLAT, UTAH  
N3837.5-W11107.5/7.5

1968  
PHOTOINSPECTED 1976  
DMA 3761 II NW-SERIES V897

