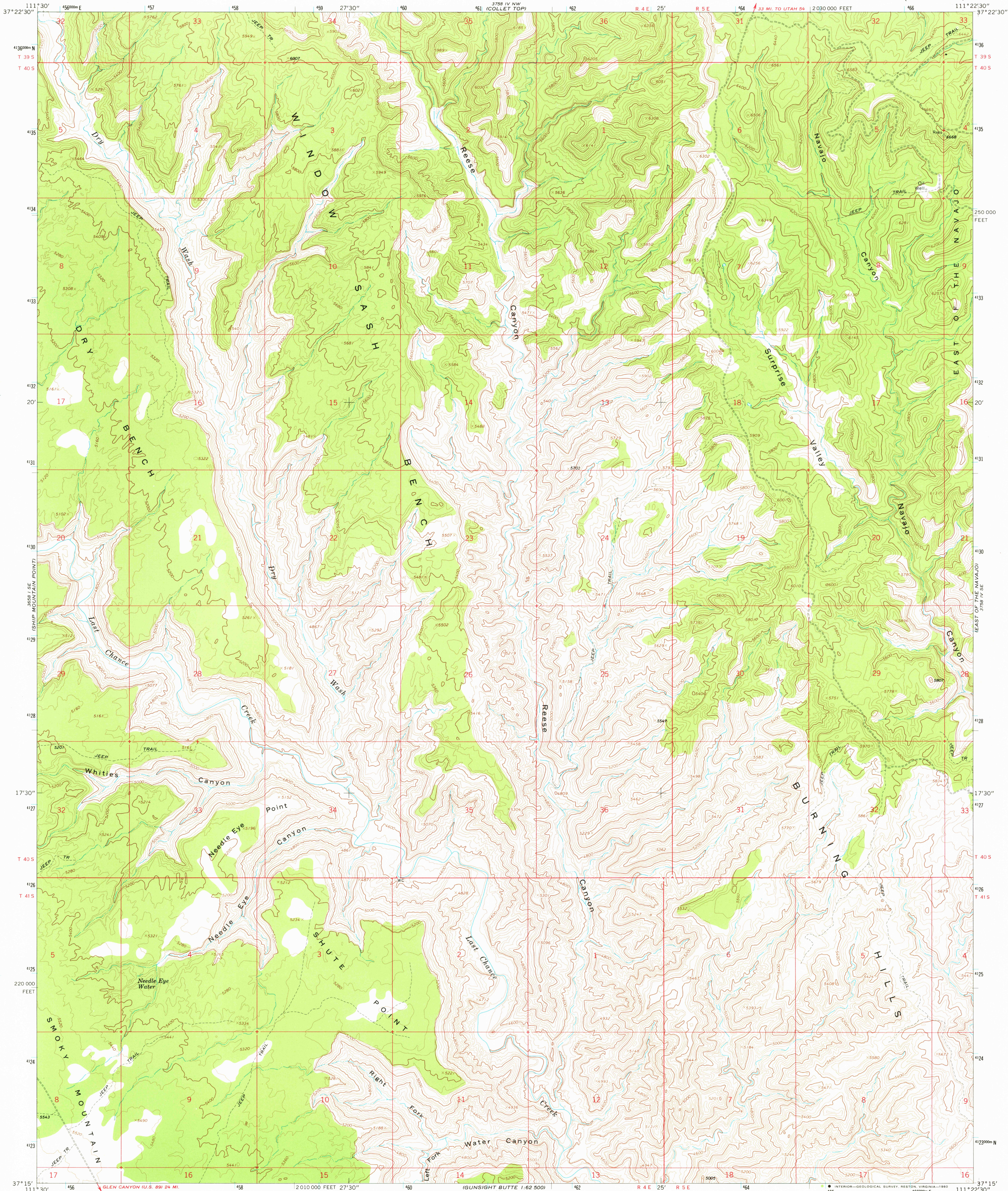
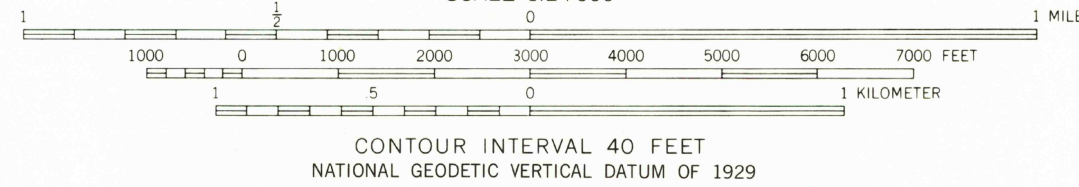
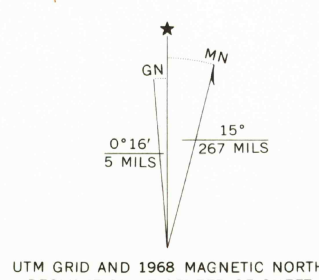


UNITED STATES  
DEPARTMENT OF THE INTERIOR  
GEOLOGICAL SURVEY

NEEDLE EYE POINT QUADRANGLE  
UTAH—KANE CO.  
7.5 MINUTE SERIES (TOPOGRAPHIC)



Maped, edited, and published by the Geological Survey  
Control by USGS and USC&GS  
Topography by photogrammetric methods from aerial  
photographs taken 1966. Field checked 1968  
Polyconic projection. 1927 North American datum  
10,000-foot grid based on Utah coordinate system, south zone  
1000-meter Universal Transverse Mercator grid ticks,  
zone 12, shown in blue  
To place on the predicted North American Datum 1983  
move the projection lines 5 meters north and  
65 meters east as shown by dashed corner ticks  
Map photoinspected 1976  
No major culture or drainage changes observed



USGS  
Historical File  
Topographic Division

NEEDLE EYE POINT, UTAH  
N3715—W1122.5/7.5  
1968  
PHOTOINSPECTED 1976  
DMA 3758 IV SW—SERIES V897

ROAD CLASSIFICATION  
Unimproved road, fair or dry weather —————

AUG 19 1980

THIS MAP COMPLIES WITH NATIONAL MAP ACCURACY STANDARDS  
FOR SALE BY U. S. GEOLOGICAL SURVEY, DENVER, COLORADO 80225, OR RESTON, VIRGINIA 22092  
A FOLDER DESCRIBING TOPOGRAPHIC MAPS AND SYMBOLS IS AVAILABLE ON REQUEST