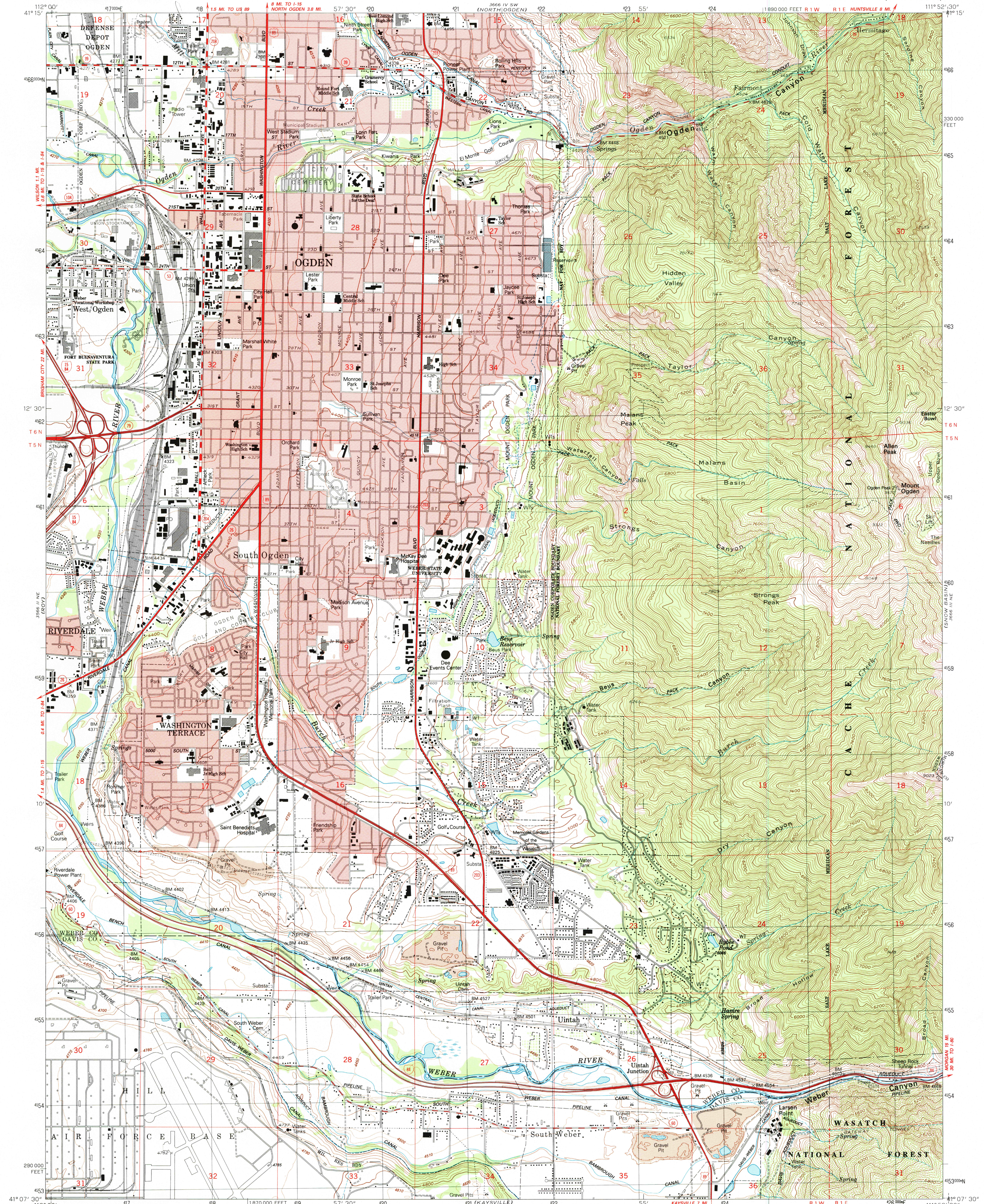
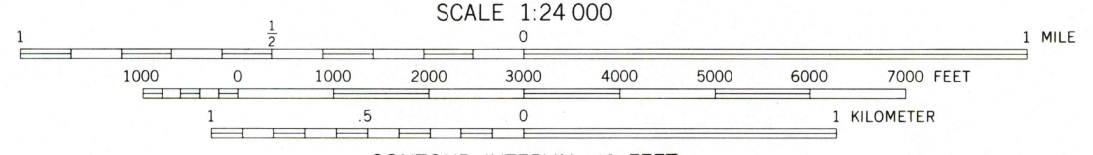
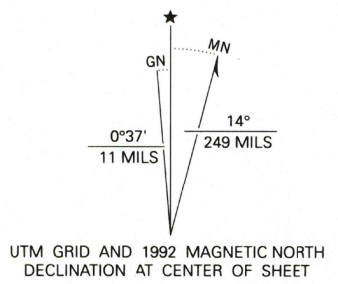


UNITED STATES
DEPARTMENT OF THE INTERIOR
GEOLOGICAL SURVEY

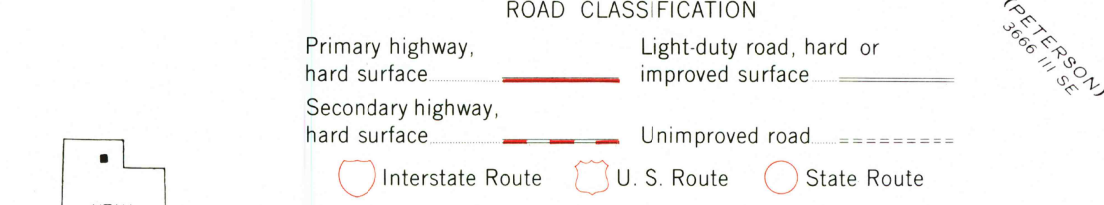
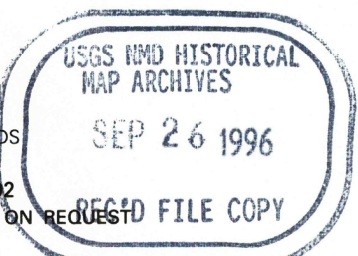
OGDEN QUADRANGLE
UTAH
7.5 MINUTE SERIES (TOPOGRAPHIC)



Produced by the United States Geological Survey
in cooperation with the Army Corps of Engineers
Control by USGS and NOS/NOAA
Compiled from aerial photographs taken 1953 and 1954. Revised
from aerial photographs taken 1986. Field checked 1987
Map edited 1992
North American Datum of 1927 (NAD 27). Projection and
10,000-foot grid ticks: Utah Coordinate System, north zone
(Lambert Conformal Conic). 1000-meter Universal Transverse
Mercator grid, zone 12.
The difference between NAD 27 and North American Datum of
1983 (NAD 83) for 7.5 minute intersections is given in USGS
Bulletin 1875. The NAD 83 is shown by dashed corner ticks
There may be private inholdings within the boundaries of the
National or State reservations shown on this map
Red tint indicates areas in which only landmark buildings are shown



CONTOUR INTERVAL 40 FEET
SUPPLEMENTARY CONTOUR INTERVAL 10 FEET
NATIONAL GEODETIC VERTICAL DATUM OF 1929
THIS MAP COMPLIES WITH NATIONAL MAP ACCURACY STANDARDS
FOR SALE BY U.S. GEOLOGICAL SURVEY
DENVER, COLORADO 80225, OR RESTON, VIRGINIA 22092
A FOLDER DESCRIBING TOPOGRAPHIC MAPS AND SYMBOLS IS AVAILABLE ON REQUEST FILE COPY



OGDEN, UTAH
41111-B8-TF-024
1992
DMA 3666 III NW-SERIES V897

