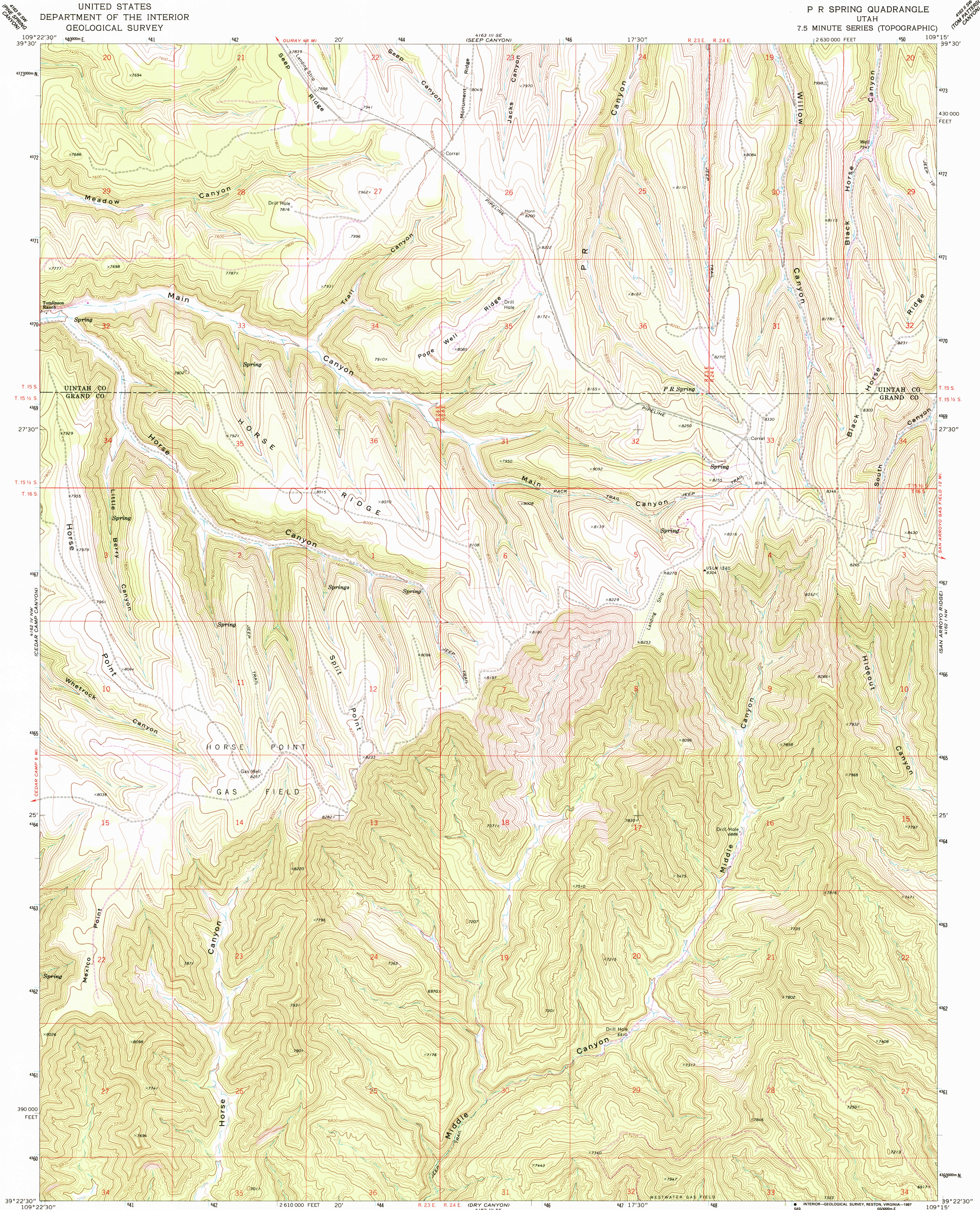


UNITED STATES
DEPARTMENT OF THE INTERIOR
GEOLOGICAL SURVEY

P R SPRING QUADRANGLE
UTAH
7.5 MINUTE SERIES (TOPOGRAPHIC)



Mapped, edited, and published by the Geological Survey

Control by USGS and USC&GS

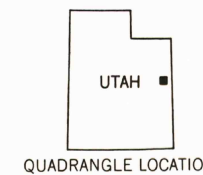
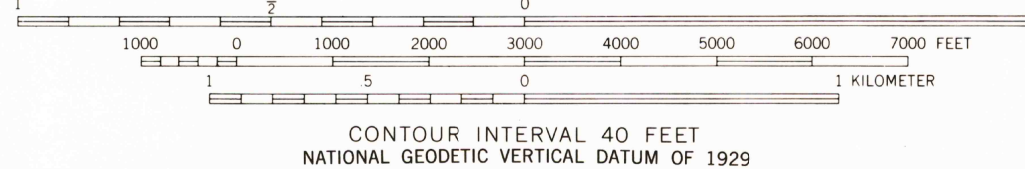
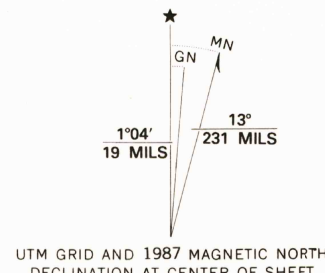
Topography by photogrammetric methods from aerial photographs taken 1969. Field checked 1970

Polyconic projection. 1927 North American datum
10,000-foot grid based on Utah coordinate system, central zone
1000-meter Universal Transverse Mercator grid ticks, zone 12, shown in blue

Fine red dashed lines indicate selected fence lines

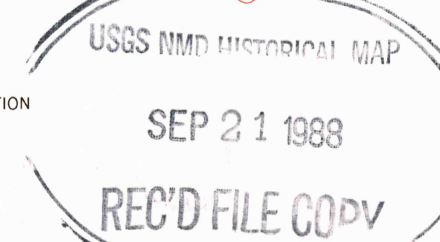
To place on the predicted North American Datum 1983,
move the projection lines 6 meters north and
59 meters east as shown by dashed corner ticks

Revisions shown in purple compiled from aerial photographs taken 1983 and
other sources. This information not field checked. Map edited 1987



ROAD CLASSIFICATION	
Primary highway, hard surface	Light-duty road, hard or improved surface
Secondary highway, hard surface	Unimproved road
Interstate Route	U.S. Route
	State Route

THIS MAP COMPLIES WITH NATIONAL MAP ACCURACY STANDARDS
FOR SALE BY U.S. GEOLOGICAL SURVEY, DENVER, COLORADO 80225, OR RESTON, VIRGINIA 22092
A FOLDER DESCRIBING TOPOGRAPHIC MAPS AND SYMBOLS IS AVAILABLE ON REQUEST



P R SPRING, UTAH
39109-D3-TF-024

1970
PHOTOREVISED 1987
DMA 4162 IV NE-SERIES Y897