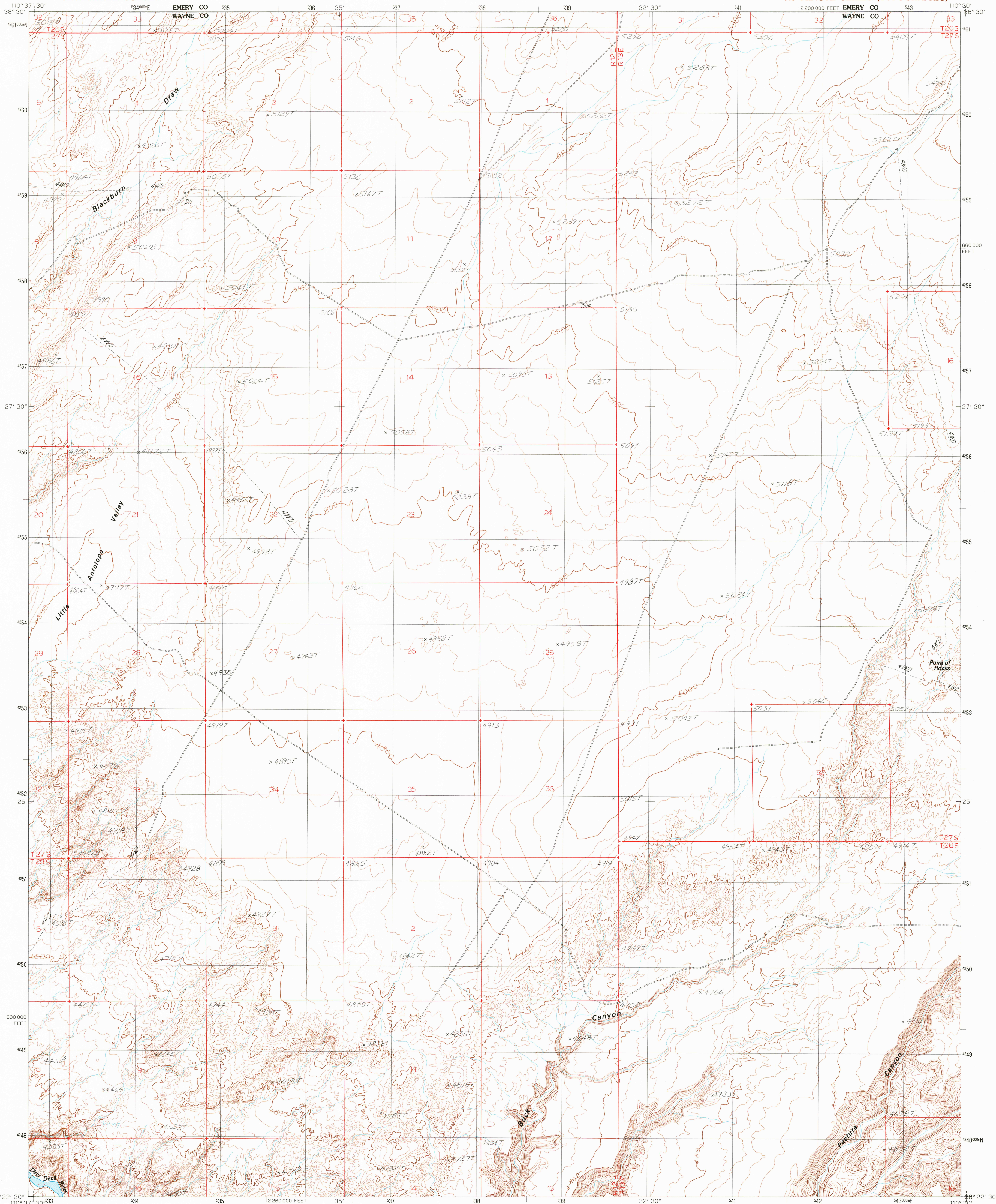


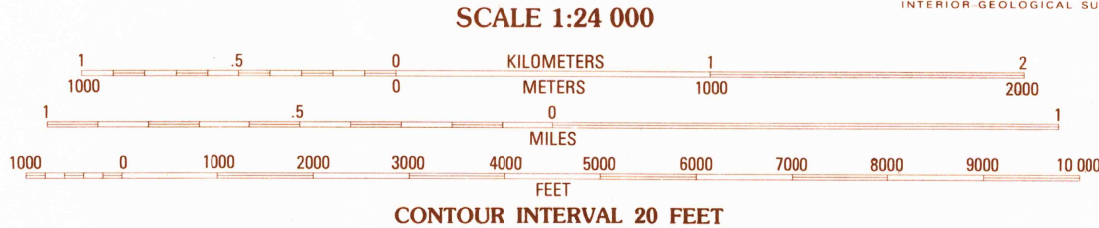
UNITED STATES
DEPARTMENT OF THE INTERIOR
GEOLOGICAL SURVEY

POINT OF ROCKS WEST QUADRANGLE
UTAH
7.5 MINUTE SERIES (TOPOGRAPHIC)



PRODUCED BY THE UNITED STATES GEOLOGICAL SURVEY
CONTROL BY USGS, NOS/NOAA
COMPILED FROM AERIAL PHOTOGRAPHS TAKEN 1957
FIELD CHECKED 1963
LIMITED REVISION FROM AERIAL PHOTOGRAPHS TAKEN 1981
FIELD CHECKED 1984. MAP EDITED 1986
PROJECTION LAMBERT CONFORMAL CONIC
GRID: 1000-METER UNIVERSAL TRANSVERSE MERCATOR ZONE 12
10,000-FOOT STATE GRID TICKS UTAH, SOUTH ZONE
UTM GRID DECLINATION 016 EAST
1986 MAGNETIC NORTH DECLINATION 13'30" EAST
VERTICAL DATUM NATIONAL GEODETIC VERTICAL DATUM OF 1929
HORIZONTAL DATUM 1927 NORTH AMERICAN DATUM
To place on the predicted North American Datum of 1983,
move the projection lines as shown by dashed corner ticks
(6 meters north and 62 meters east)
There may be private inholdings within the boundaries of any
Federal and State Reservations shown on this map
Public land survey system is shown as published in 1963 and
verified or supplemented in 1984
Where omitted, land lines have not been established

PROVISIONAL MAP
Produced from original
manuscript drawings. Infor-
mation shown as of date of
field check. T



THIS MAP COMPLIES WITH NATIONAL MAP ACCURACY STANDARDS
FOR SALE BY U.S. GEOLOGICAL SURVEY, DENVER, COLORADO 80225
OR RESTON, VIRGINIA 22092

QUADRANGLE LOCATION

1	2	3	1 Goblin Valley
			2 Gilson Butte
			3 The Flat Tops
4		5	4 The North
			5 Point of Rocks East
			6 Hanksville
6	7	8	7 Angel Cove
			8 Angel Point

ADJOINING 7.5' QUADRANGLE NAMES

ROAD LEGEND

Improved Road
Unimproved Road
Trail
Interstate Route U.S. Route State Route

POINT OF ROCKS WEST, UTAH

PROVISIONAL EDITION 1986

38110-D5-TF-024

