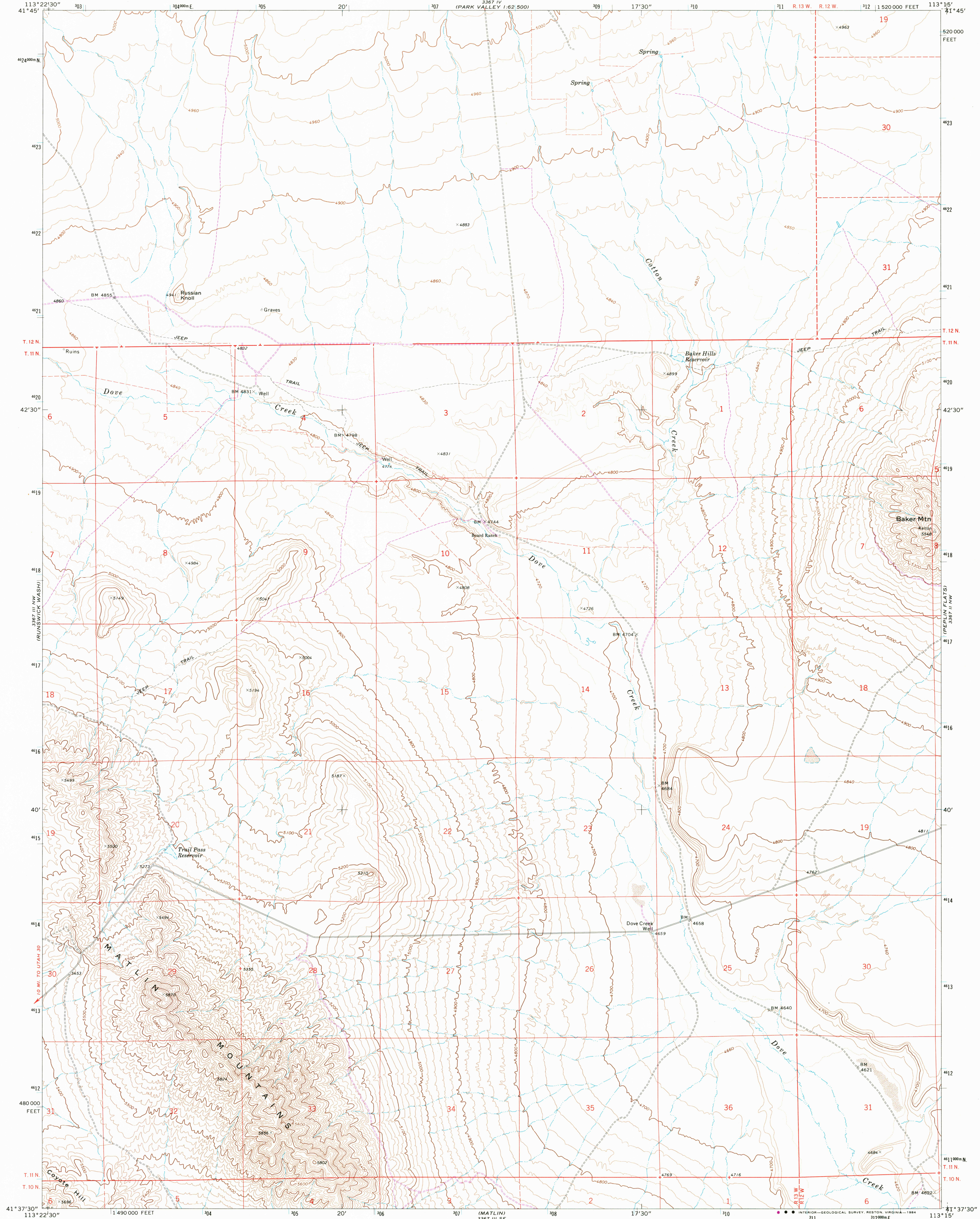


UNITED STATES  
DEPARTMENT OF THE INTERIOR  
GEOLOGICAL SURVEY

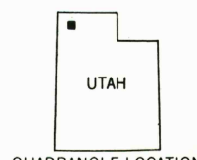
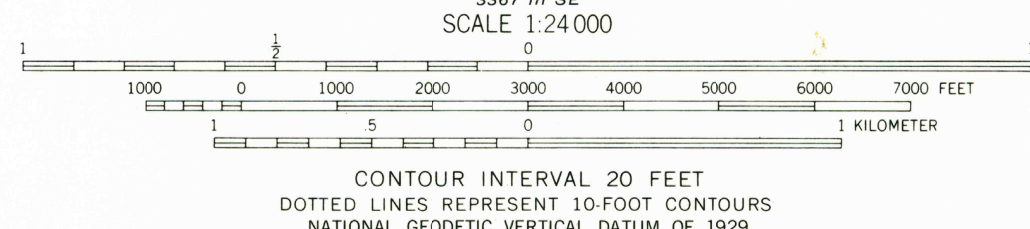
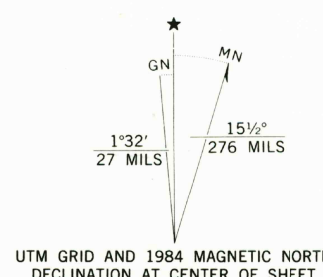
RUSSIAN KNOLL QUADRANGLE  
UTAH—BOX ELDER CO.  
7.5 MINUTE SERIES (TOPOGRAPHIC)



Mapped, edited, and published by the Geological Survey

Control by USGS and NOS/NOAA  
Topography by photogrammetric methods from aerial photographs  
taken 1968. Field checked 1971

Projection and 10,000-foot grid ticks: Utah coordinate system,  
north zone (Lambert conformal conic)  
1000-meter Universal Transverse Mercator grid ticks,  
zone 12, shown in blue  
1927 North American Datum  
To place on the predicted North American Datum 1983  
move the projection lines 12 meters north and  
69 meters east as shown by dashed corner ticks  
Fine red dashed lines indicate selected fence lines  
Certain land lines are omitted because of insufficient data



ROAD CLASSIFICATION	
Primary highway, hard surface	Light-duty road, hard or improved surface
Secondary highway, hard surface	Unimproved road
Interstate Route	U. S. Route
	State Route

THIS MAP COMPLIES WITH NATIONAL MAP ACCURACY STANDARDS  
FOR SALE BY U. S. GEOLOGICAL SURVEY, DENVER, COLORADO 80225, OR RESTON, VIRGINIA 22092  
A FOLDER DESCRIBING TOPOGRAPHIC MAPS AND SYMBOLS IS AVAILABLE ON REQUEST

Revisions shown in purple and woodland compiled  
from aerial photographs taken 1982 and other sources  
This information not field checked. Map edited 1984

RUSSIAN KNOLL, UTAH  
41113-F3-TF-024

1971  
PHOTOREVISED 1984  
DMA 3367 III NE—SERIES Y897

RETURN TO:  
USGS AND HISTORICAL MAP ARCHIVES