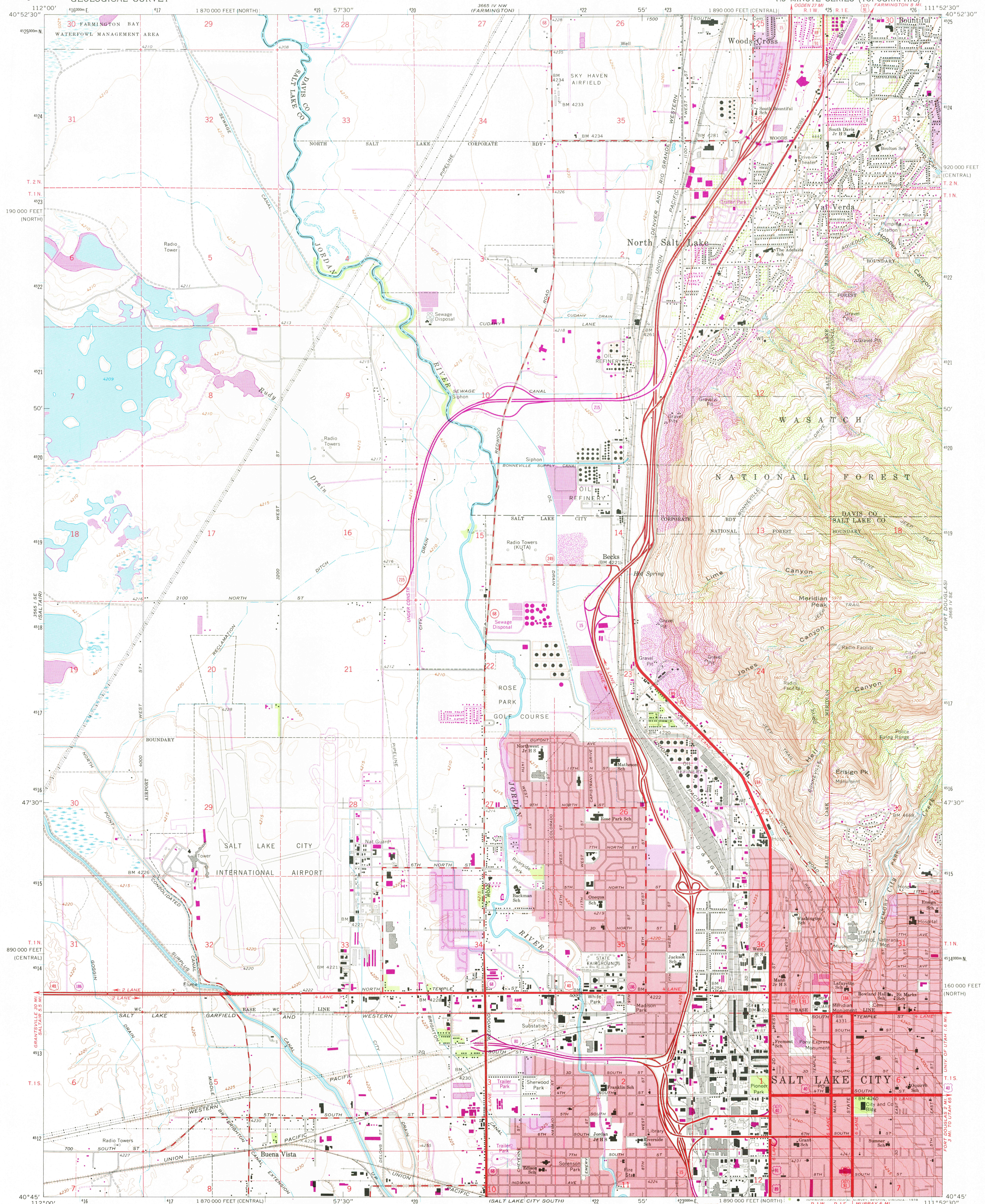


UNITED STATES
DEPARTMENT OF THE INTERIOR
GEOLOGICAL SURVEY

SALT LAKE CITY NORTH QUADRANGLE
UTAH
7.5 MINUTE SERIES (TOPOGRAPHIC)



Mapped, edited, and published by the Geological Survey

Control by USGS and NOS/NOAA
Topography by photogrammetric methods from aerial photographs taken 1950 and planimetric surveys 1925, 1934, and 1951
Revised from aerial photographs taken 1962. Field checked 1963

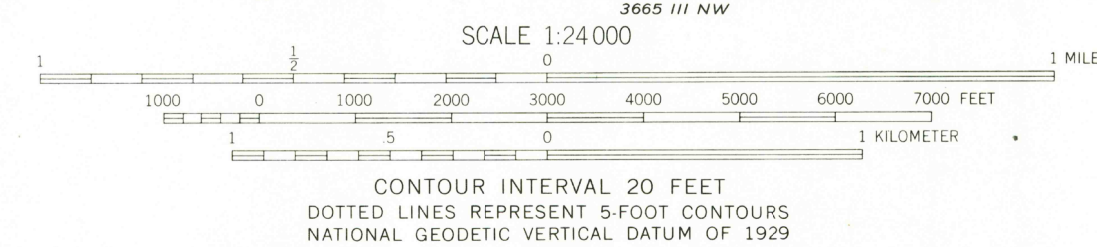
Polyconic projection. 1927 North American datum
10,000-foot grids based on Utah coordinate system, central and north zones
1000-meter Universal Transverse Mercator grid ticks, zone 12, shown in blue

Red tint indicates areas in which only landmark buildings are shown

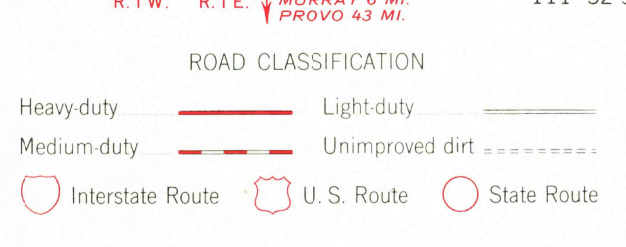
Fine red dashed lines indicate selected fence lines

Revisions shown in purple compiled from aerial photographs taken 1969 and 1975. This information not field checked

Purple tint indicates extension of urban areas



THIS MAP COMPLIES WITH NATIONAL MAP ACCURACY STANDARDS
FOR SALE BY U.S. GEOLOGICAL SURVEY, DENVER, COLORADO 80225, OR RESTON, VIRGINIA 22092
A FOLDER DESCRIBING TOPOGRAPHIC MAPS AND SYMBOLS IS AVAILABLE ON REQUEST



SALT LAKE CITY NORTH, UTAH
N4045—W1152.5/7.5

USGS
Historical File
Topographic Division
1963
PHOTOREVISED 1969 AND 1975
AMS 3665 IV SW—SERIES V897

NOV 28 1978

4400