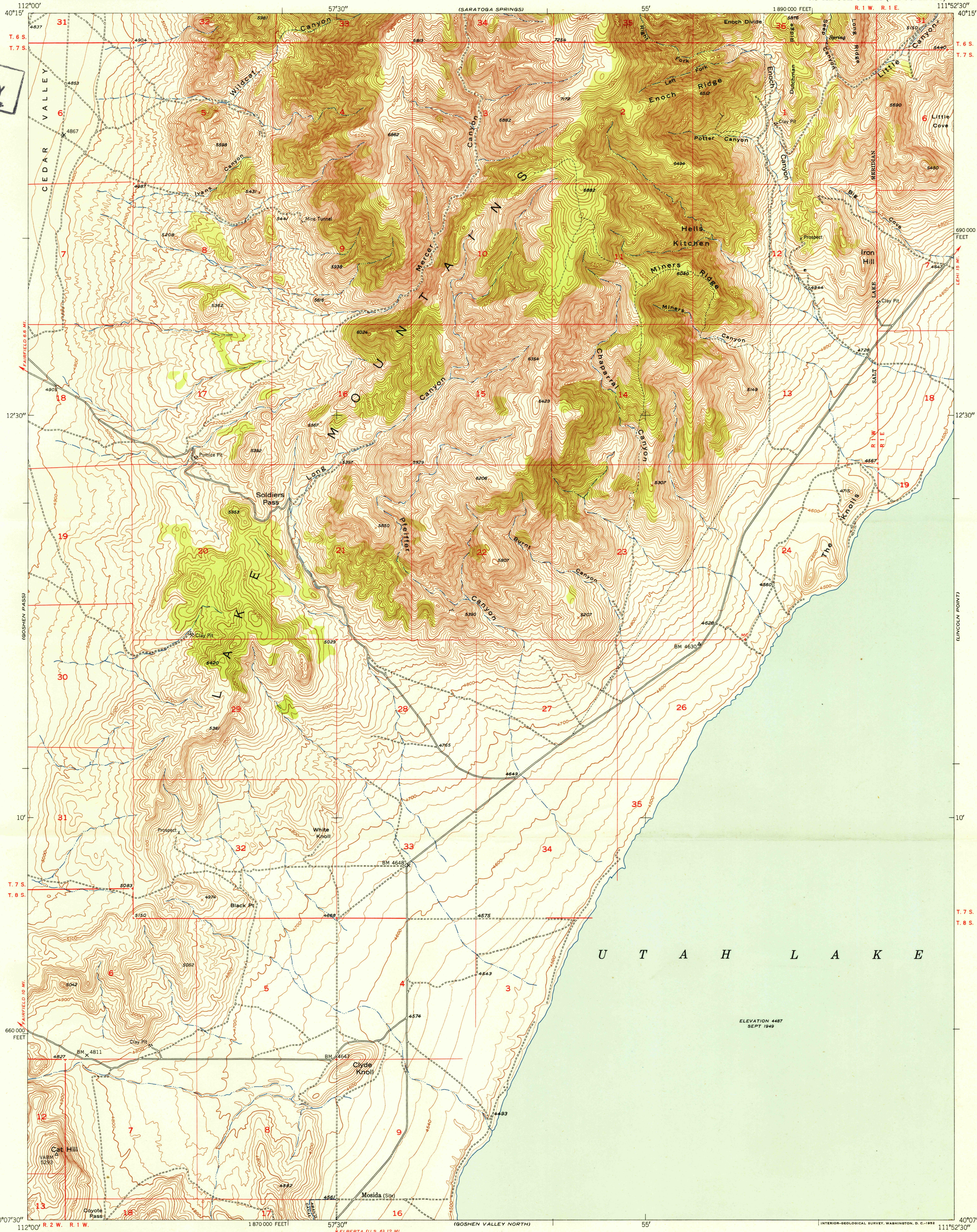


UNITED STATES
DEPARTMENT OF THE INTERIOR
GEOLOGICAL SURVEY

SOLDIERS PASS QUADRANGLE
UTAH-UTAH CO.
7.5 MINUTE SERIES (TOPOGRAPHIC)

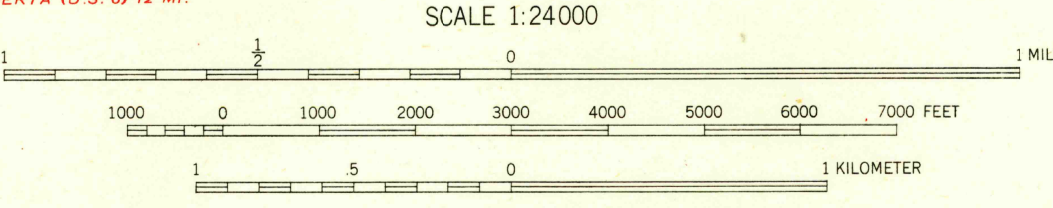
R. 1 W. R. 1 E.



FILE COPY
Inspection and Editing

Mapped, edited, and published by the Geological Survey
Control by USGS
Topography from aerial photographs by multiplex methods
and by plane-table surveys 1950
Aerial photographs taken 1947
Polyconic projection. 1927 North American datum
10,000 foot grid based on Utah coordinate system,
central zone

TRUE NORTH
MAGNETIC NORTH
APPROXIMATE MEAN
DECLINATION, 1950



CONTOUR INTERVAL 20 FEET
DOTTED LINES REPRESENT HALF-INTERVAL CONTOURS
DATUM IS MEAN SEA LEVEL

THIS MAP COMPLIES WITH NATIONAL MAP ACCURACY STANDARDS
FOR SALE BY U. S. GEOLOGICAL SURVEY, FEDERAL CENTER, DENVER, COLORADO OR WASHINGTON 25, D. C.
A FOLDER DESCRIBING TOPOGRAPHIC MAPS AND SYMBOLS IS AVAILABLE ON REQUEST

USGS
Historical File
Topographic Division

FILE COPY
Inspection and Editing

ROAD CLASSIFICATION
Heavy-duty ——— 4 LANE 16 LANE Light-duty ———
Medium-duty ——— 4 LANE 16 LANE Unimproved dirt =====
U. S. Route State Route

SOLDIERS PASS, UTAH
N4007.5—W11152.5/7.5

1950