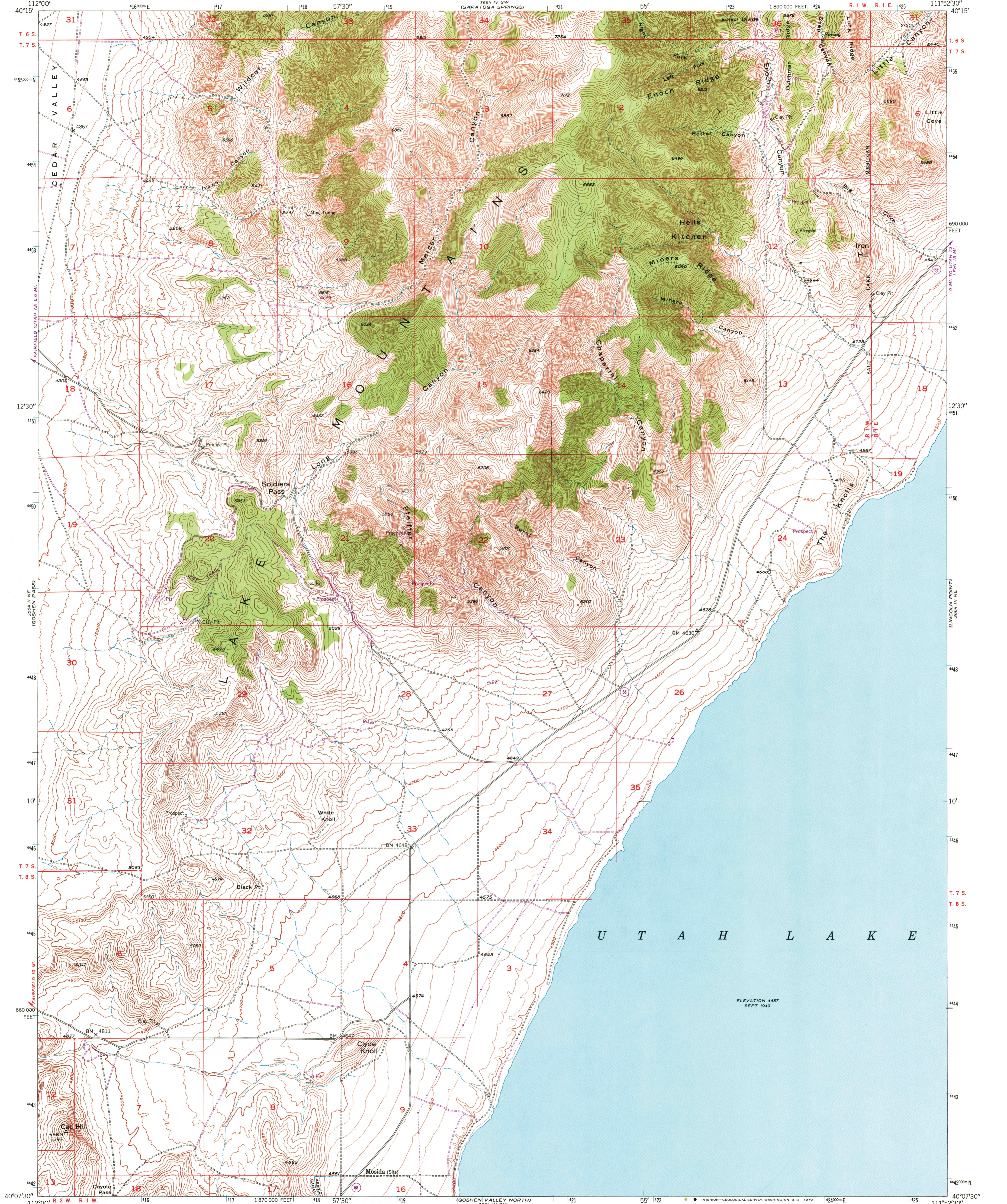
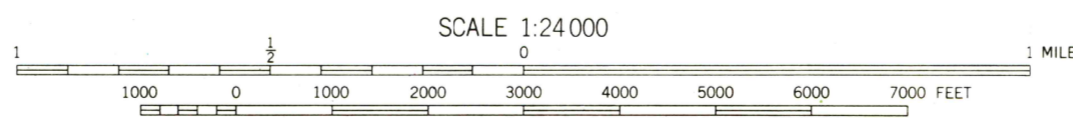
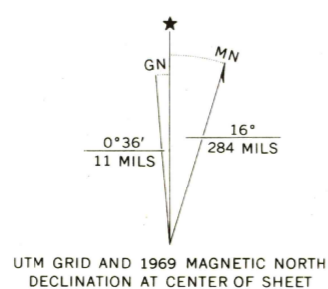


UNITED STATES
DEPARTMENT OF THE INTERIOR
GEOLOGICAL SURVEY

SOLDIERS PASS QUADRANGLE
UTAH-UTAH CO.
7.5 MINUTE SERIES (TOPOGRAPHIC)
NW/4 WEST MOUNTAIN 15' QUADRANGLE

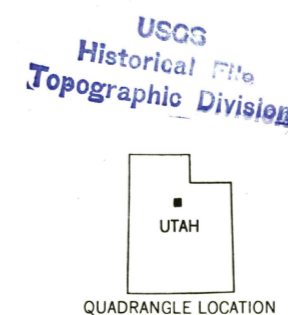


Mapped, edited, and published by the Geological Survey
Control by USGS
Topography from aerial photographs by multiplex methods
and by plane-table surveys 1950
Aerial photographs taken 1947
Polyconic projection. 1927 North American datum
10,000-foot grid based on Utah coordinate system,
central zone
1000-meter Universal Transverse Mercator grid ticks,
zone 12, shown in blue
Revisions shown in purple compiled from aerial photographs
taken 1969. This information not field checked



CONTOUR INTERVAL 20 FEET
DOTTED LINES REPRESENT HALF-INTERVAL CONTOURS
DATUM IS MEAN SEA LEVEL

THIS MAP COMPLIES WITH NATIONAL MAP ACCURACY STANDARDS
FOR SALE BY U. S. GEOLOGICAL SURVEY, DENVER, COLORADO 80225, OR WASHINGTON, D. C. 20242
A FOLDER DESCRIBING TOPOGRAPHIC MAPS AND SYMBOLS IS AVAILABLE ON REQUEST



ROAD CLASSIFICATION
Heavy-duty _____ Light-duty _____
Medium-duty _____ Unimproved dirt =====
State Route ○

U.S.G.S.
FILE COPY
TOPOGRAPHIC DIVISION

SOLDIERS PASS, UTAH
NW/4 WEST MOUNTAIN 15' QUADRANGLE
N4007.5-W11152.5/7.5

1950
PHOTOREVISED 1969
AMS 3664 III NW-SERIES Y897

NOV 10 1970