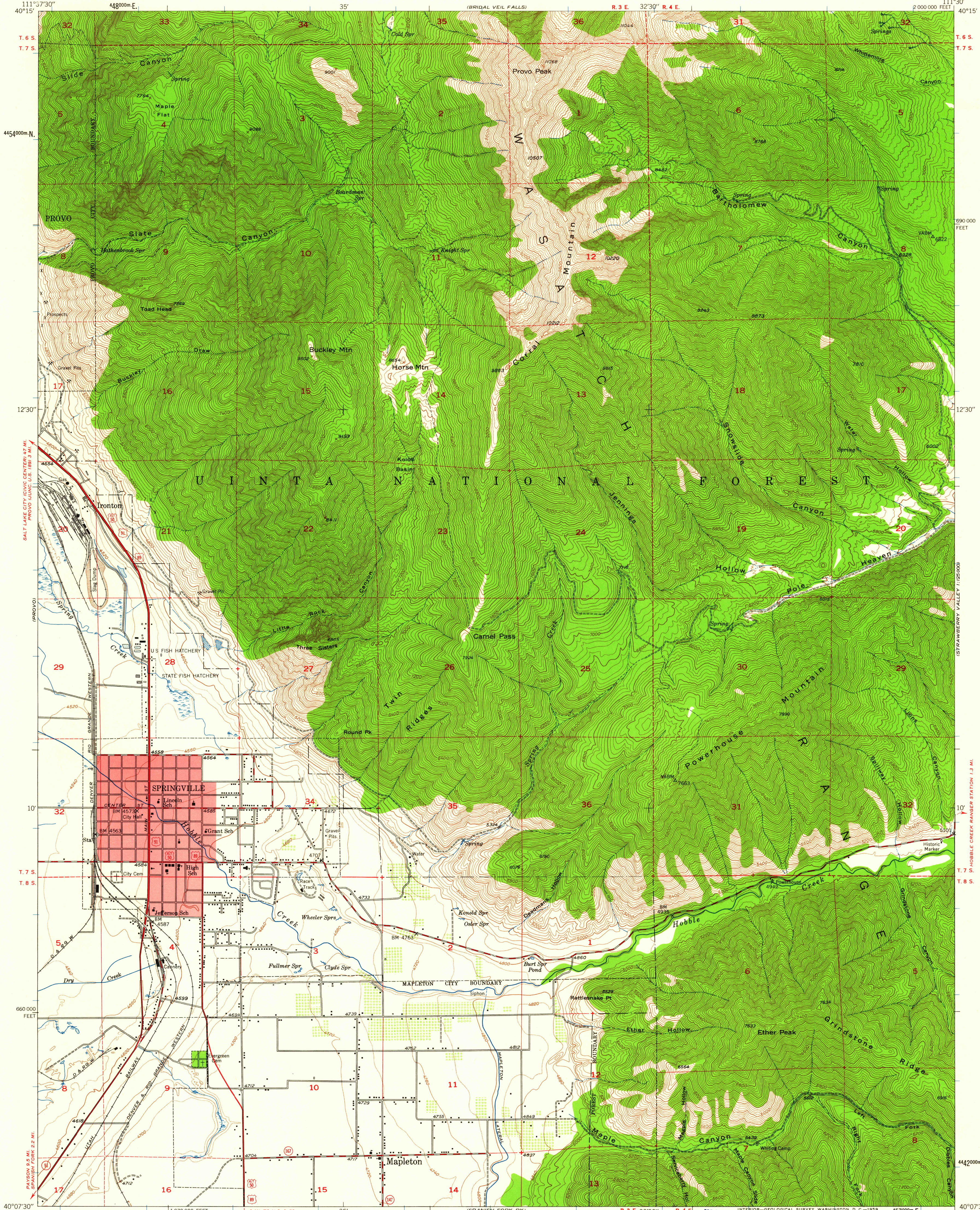
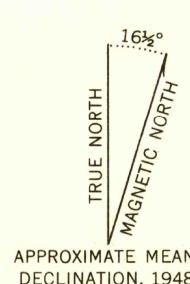


UNITED STATES  
DEPARTMENT OF THE INTERIOR  
GEOLOGICAL SURVEY

SPRINGVILLE QUADRANGLE  
UTAH-UTAH CO.  
7.5 MINUTE SERIES (TOPOGRAPHIC)

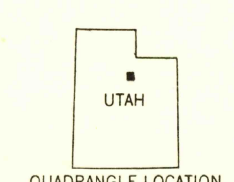


Mapped, edited, and published by the Geological Survey  
Control by USGS and USC&GS  
Topography from aerial photographs by multiplex methods,  
and by plane-table surveys 1948  
Aerial photographs taken 1946  
Polyconic projection, 1927 North American datum  
10,000-foot grid based on Utah coordinate system,  
central zone  
Red tint indicates areas in which only  
landmark buildings are shown  
Dashed land lines indicate approximate location  
1000 meter Universal Transverse Mercator grid ticks,  
zone 12, shown in blue



SCALE 1:24,000  
1 0 1000 2000 3000 4000 5000 6000 7000 FEET  
1 0 1 2 KILOMETER  
CONTOUR INTERVAL 40 FEET  
DOTTED LINES REPRESENT HALF INTERVAL CONTOURS  
DATUM IS MEAN SEA LEVEL  
THIS MAP COMPLIES WITH NATIONAL MAP ACCURACY STANDARDS  
FOR SALE BY U. S. GEOLOGICAL SURVEY, DENVER 25, COLORADO OR WASHINGTON 25, D. C.  
A FOLDER DESCRIBING TOPOGRAPHIC MAPS AND SYMBOLS IS AVAILABLE ON REQUEST

USGS  
Historical File  
Topographic Division



ROAD CLASSIFICATION  
Heavy-duty ——— Light-duty ———  
Medium-duty ——— Unimproved dirt ———  
U. S. Route ——— State Route ———

U.S.G.S. FILE COPY  
SPRINGVILLE, UTAH  
N4007.5-W11130/7.5  
1948

AUG 25 1959  
2095