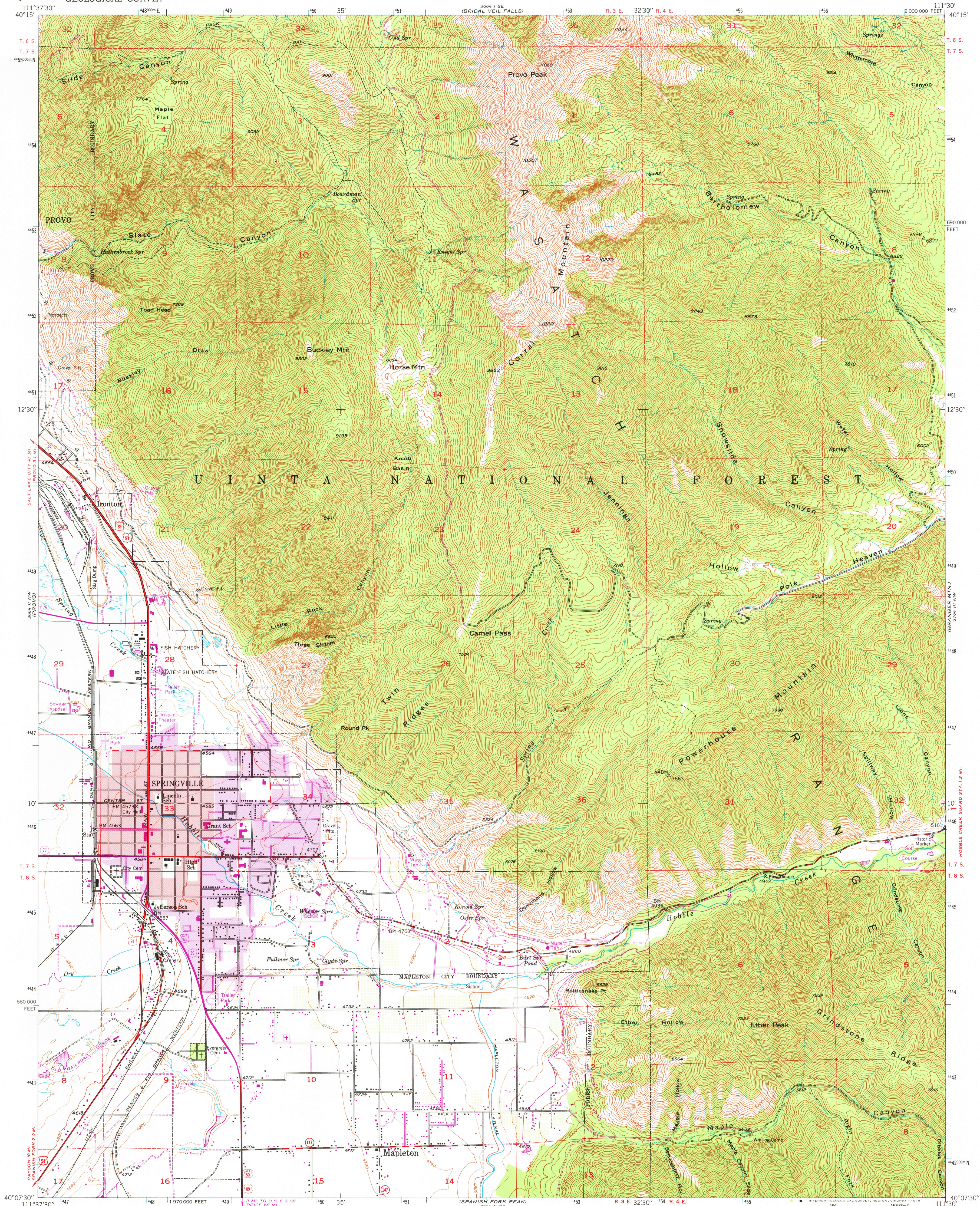


UNITED STATES
DEPARTMENT OF THE INTERIOR
GEOLOGICAL SURVEY

SPRINGVILLE QUADRANGLE
UTAH-UTAH CO.
7.5 MINUTE SERIES (TOPOGRAPHIC)



Mapped, edited, and published by the Geological Survey

Control by USGS and NOS/NOAA

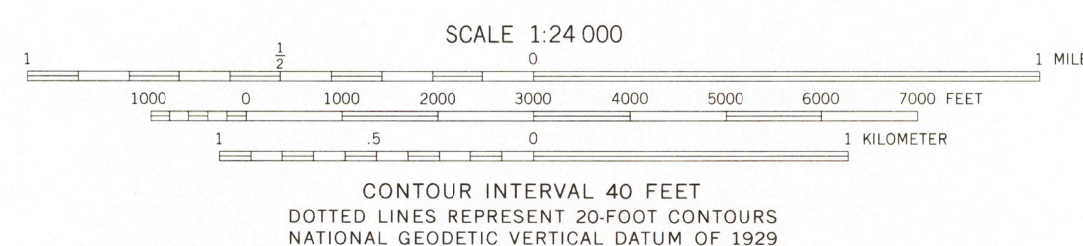
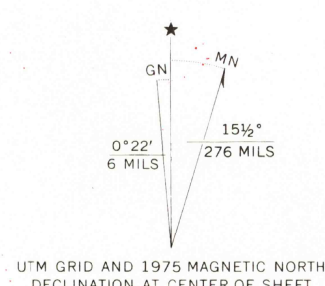
Topography from aerial photographs by multiplex methods,
and by plane-table surveys 1948
Aerial photographs taken 1946

Polyconic projection. 1927 North American datum
10,000-foot grid based on Utah coordinate system,
central zone

Red tint indicates areas in which only
landmark buildings are shown

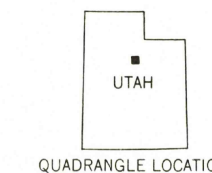
1000-meter Universal Transverse Mercator grid ticks,
zone 12, shown in blue

Purple tint indicates extension of urban areas



THIS MAP COMPLIES WITH NATIONAL MAP ACCURACY STANDARDS
FOR SALE BY U.S. GEOLOGICAL SURVEY, DENVER, COLORADO 80225, OR RESTON, VIRGINIA 22092 Revisions shown in purple compiled from aerial photographs
taken 1969 and 1975. This information not field checked
A FOLDER DESCRIBING TOPOGRAPHIC MAPS AND SYMBOLS IS AVAILABLE ON REQUEST

ROAD CLASSIFICATION
Heavy-duty ——— Light-duty ———
Medium-duty ——— Unimproved dirt ———
U.S. Route ——— State Route ———



USGS
Historical File
Topographic Division

SPRINGVILLE, UTAH

N4007.5-W11130/7.5

1948
PHOTOREVISED 1969 AND 1975
AMS 3664 II NE-SERIES V897

SEP 0 1978